

CORNER RECORD

Agency Index

CR22-004

Document Number

157-260-27

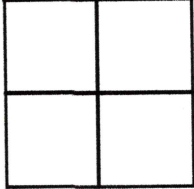
City of unincorporated

County of MARIN, California

Brief Legal Description Lot 86, Bel-Marin Keys Unit No. 1-C (12 RM 69)

CORNER TYPE

COORDINATES (Optional)



Government Corner Control
 Meander Property
 Rancho Other

N. _____ E. _____
 Elevation _____
 Units Metric U.S. Survey Foot
 Horizontal Datum _____
 Zone _____ Epoch Date _____
 Vertical Datum _____

Date of Survey December 15, 2021

Complies with Public Resources Code §§8801-8819
 Complies with Public Resources Code §§8890-8902

PLS Act Ref: 8765(d) 8771 8773 Other:
 Corner/Monument: Left as found Established Rebuilt Pre-Construction
 Found and tagged Reestablished Referenced Post-Construction

Narrative of corner identified and monument as found, set, reset, replaced, or removed:
 See sheet #2 for description (s):

SURVEYOR'S STATEMENT

This Corner Record was prepared by me or under my direction in conformance with
 the Professional Land Surveyors' Act on August 4, 2022
 Signed [Signature] P.L.S. or R.C.E. No. 6649

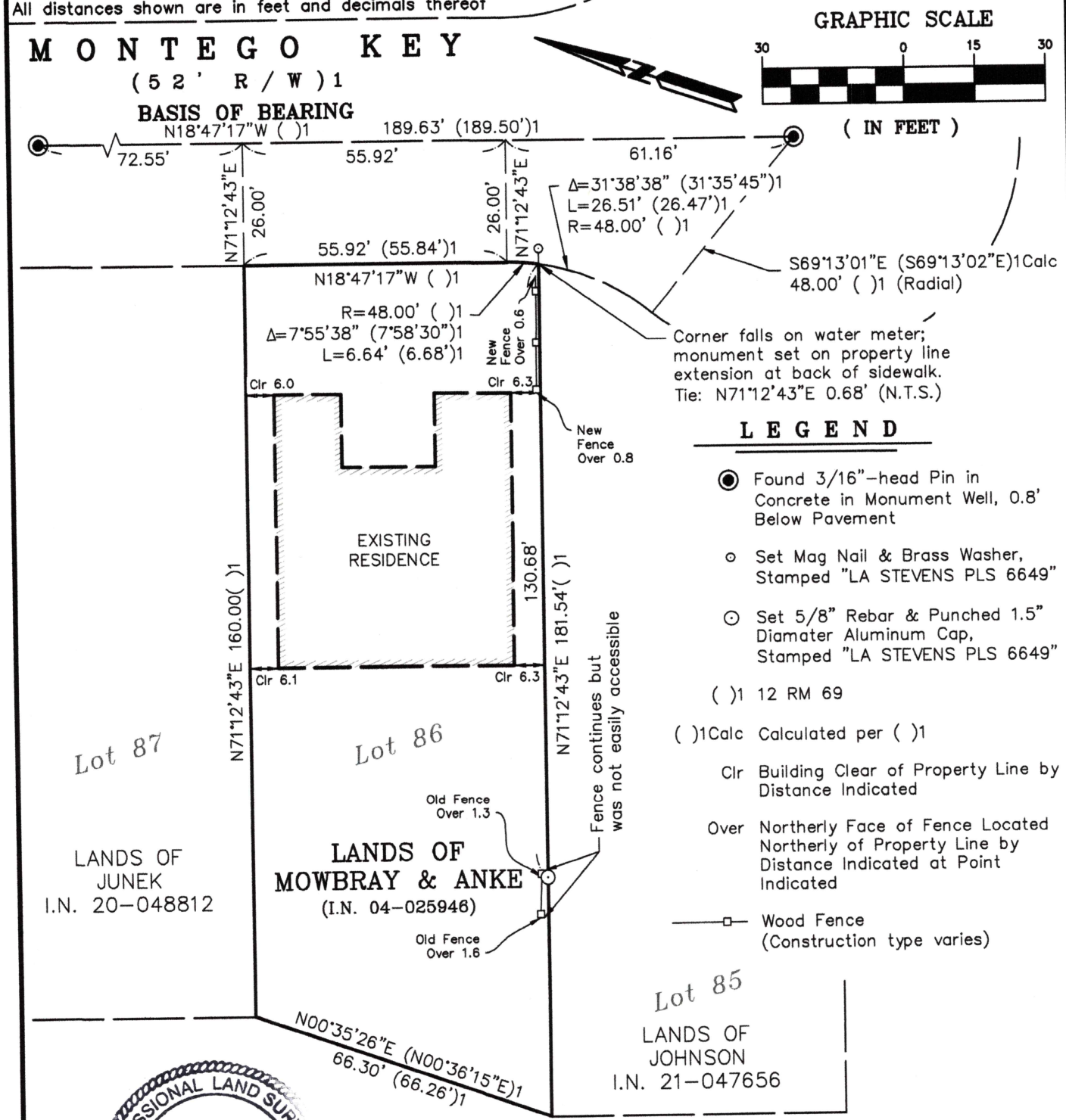


COUNTY SURVEYOR'S STATEMENT

This Corner Record was received August 04, 2022
 and examined and filed August 04, 2022
 Signed T.W.P. P.L.S. [Redacted] No. 8176
 Title County Surveyor



County Surveyor's Comment _____



8-4-2022

CORNER RECORD
LANDS OF MOWBRAY & ANKE

(Lot 86, 12 RM 69)
NOVATO

MARIN COUNTY SCALE: 1" = 30' CALIFORNIA
AUGUST 4, 2022

L.A. Stevens & Associates, Inc.
Professional Land Surveyors * (415) 382-7713
7 Commercial Blvd., Suite 1 * Novato, CA 94949

Job # 212175

Lawrence A. Stevens, PLS 6649
Copyright © Lawrence A. Stevens 2022