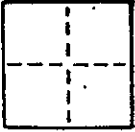


**CORNER RECORD**

1 OF 1

COUNTY OF MARIN T. \_\_\_\_\_ S. \_\_\_\_\_ MERIDIAN CALIFORNIA  
 CORNER TYPE: GOVT. CORNER  MEANDER  RANCHO  CONTROL  OTHER   
 CORNER IDENTIFICATION - DATE OF VISIT \_\_\_\_\_ 19\_\_\_\_



CORNER - LEFT AS FOUND  FOUND AND TAGGED  REESTABLISHED OBLITERATED CORNER  REBUILT

PHYSICAL DESCRIPTION OF CORNER FOUND; EVIDENCE AND METHOD USED TO IDENTIFY OR REESTABLISH

A.P.N. 157-202-03

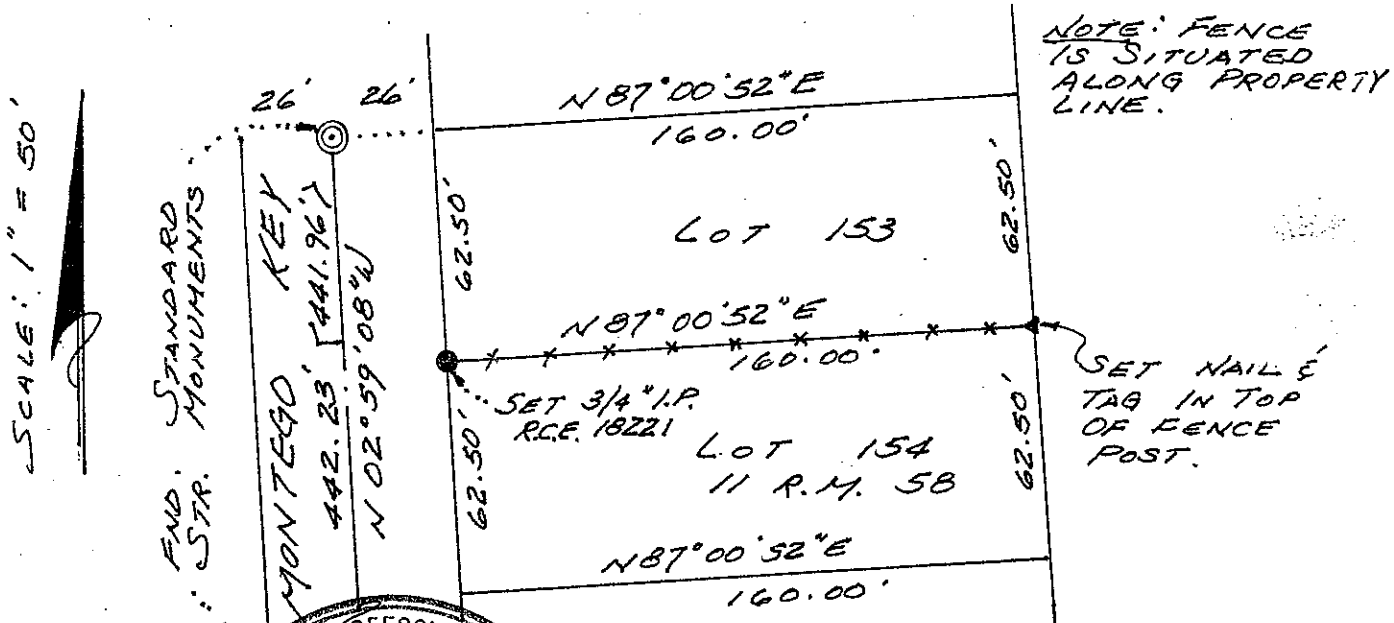
NOVATO

PHYSICAL DESCRIPTION OF MONUMENTS REBUILT OR PERPETUATED

SET 3/4" IRON PIPE & NAIL WITH TAG; R.C.E. 18221, AS SHOWN, FOR THE NORTHWEST AND NORTHEAST PROPERTY CORNERS OF LOT 154, 11 R.M. 58, MARIN COUNTY RECORDS. CORNERS WERE SET ON JUNE 15, 1992.

CALIFORNIA COORDINATE SYSTEM ORDER: FIRST  SECOND  THIRD   
 STATIONS USED: NGS (USC & GS)  STATE  COUNTY  OTHER  STATION \_\_\_\_\_ STATION \_\_\_\_\_  
 ZONE \_\_\_\_\_ ELEVATION \_\_\_\_\_ NORTHINGS (Y) \_\_\_\_\_ EASTINGS (X) \_\_\_\_\_

SKETCH: (Include reference tie or witness points, remarks and topo of area)



SURVEYOR'S CERTIFICATE  
 THIS CORNER RECORD WAS PREPARED BY ME OR UNDER MY SUPERVISION AND IN CONFORMANCE WITH THE LAND SURVEYORS ACT OF 1907.  
 ON JULY 1992  
 SIGNED: LOUIS SCHWARTZ  
 L.S. or R.C.E. No. 18221  
 No. 2721  
 Exp. 6-30-93  
 REGISTERED PROFESSIONAL ENGINEER  
 CIVIL  
 STATE OF CALIFORNIA

COUNTY SURVEYOR'S CERTIFICATE  
 THE CORNER RECORD WAS RECEIVED, EXAMINED AND FILED IN THE COUNTY RECORDS ON \_\_\_\_\_ 19\_\_\_\_.  
 BY: \_\_\_\_\_  
 TITLE: \_\_\_\_\_  
 DOCUMENT No. G-30212  
 STATEMENT ON BACK OF SHEET  
 Exp. 3-31-96  
 REGISTERED PROFESSIONAL ENGINEER  
 CIVIL  
 STATE OF CALIFORNIA