

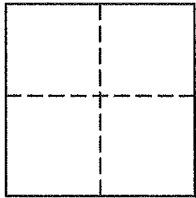
Lands of Larson
Job #: 161769

CORNER RECORD

Document Number 157-201-07

Unincorporated Novato, County of Marin, California

Brief Legal Description: Lot 7, as shown on that certain map entitled "Map of Bel-Marin Keys Unit 1-A, Filed in the Office of the County Recorder of Marin County California", on January 14, 1963 in Book 11 of Maps at Page 58 Marin County Records.



CORNER TYPE

COORDINATES (Optional)

Government Corner Control
Meander Property
Rancho Other

N _____
E _____
Zone _____ NAD27 NAD83
NAD 83 Epoch _____
Elev. _____
Vert. Datum: NGVD29 NAVD88
Meas. Units: Metric Imperial

Date of Survey August 9, 2016

Corner - Left as found Found and tagged Established Reestablished Rebuilt

Identification and type of corner found: Evidence used to identify or procedure used to establish or reestablish the corner:
See Page 2 of 2 for information

A description of the physical condition of the monument as found and as set or reset:
See Page 2 of 2 for information

SURVEYOR'S STATEMENT

This Corner Record was prepared by me or under my direction in conformance with
The Land Surveyor's Act on October 24, 2016.

Signed [Signature] P.L.S. 6649



COUNTY SURVEYOR'S STATEMENT

This Corner Record was received August 16, 2016

and examined and filed 1/18/2017

Signed T.W. Park P.L.S. or R.C.E. No. 8176

Title COUNTY SURVEYOR

County Surveyors' Comment _____

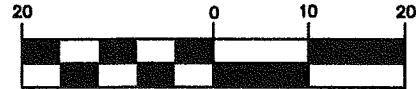


All distances shown are in feet and decimals thereof

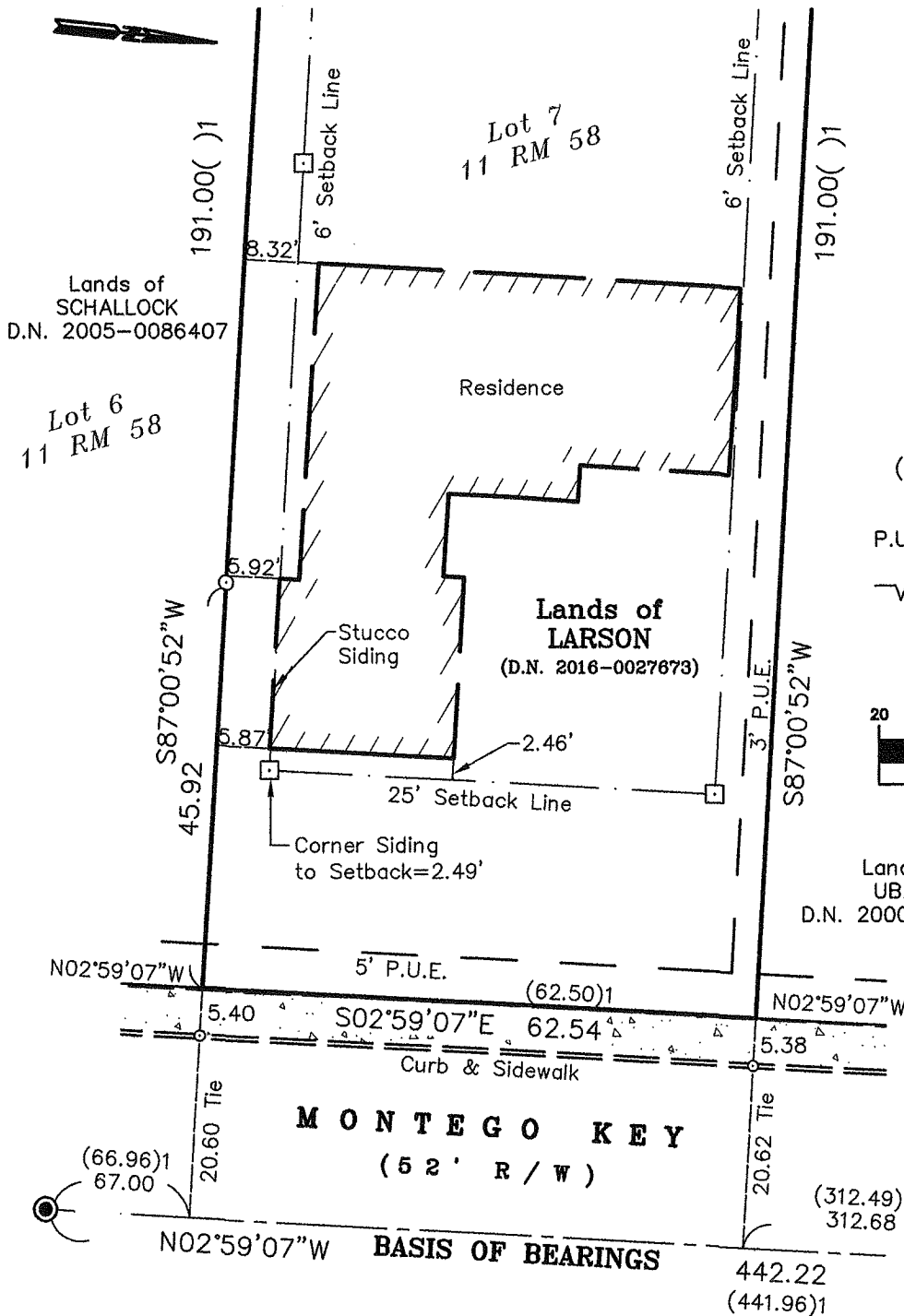
LEGEND

- Found Pin in Concrete in Handhole, 0.8' Below Asphalt Concrete
- Set Mag Nail & 1 1/2" Brass Washer, Stamped "LA STEVENS LS 6649", in Top of Curb
- Set 5/8" Rebar & Punched Aluminum Cap, Stamped "LA STEVENS PLS 6649", 0.3' Northerly of Wood Fence
- Set 2x2 Hub & Tack on Setback Line
- () 11 Maps 58, Filed January 14, 1963
- P.U.E. Public Utilities Easement
- ⎓ Not to Scale

GRAPHIC SCALE



(IN FEET)



Lands of UBALDI
D.N. 2000-0060514
Lot 8
11 RM 58



**Corner Record
Lands of Larson**

(Lot 7, 11 RM 58)

Novato Marin County California
Scale: 1" = 20' October 2016

L.A. Stevens & Associates, Inc.

Professional Land Surveyors * (415) 382-7713
7 Commercial Blvd., Suite 1 * Novato, CA 94949

Lawrence A. Stevens, PLS 6649

Job # 161769

Page 2 Of 2