

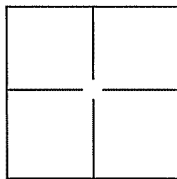
CORNER RECORD

Document Number A.P.N. 157-122-31

City of Novato Unincorporated (Black Point)

County of Marin, California

Brief Legal Description Lot 295, 296 and 297, 50 Bayview St., 16 OS 97.



CORNER TYPE

Government Corner Control
 Meander Property
 Rancho Other

Date of Survey 29 May 2012

COORDINATES(Optional)

N. _____
 E. _____
 Zone _____ NAD27 NAD83
 NAD83 Epoch _____
 Elev. _____
 Vert. Datum: NGVD29 NADV88
 Meas. Units: Metric Imperial

Corner - Left as found Found and tagged Established Reestablished Rebuilt

Identification and type of corner found: Evidence used to identify or procedure used to establish or reestablish the corner:

Found 3/4" Iron Pipe and Yellow Cap, LS 3775 (2) per 16 OS 97 and Found
3/4" Iron Pipe and Yellow Cap, LS 3971 per 16 OS 97 and Found 3/4" Iron Pipe
and Yellow Cap, LS 3971.

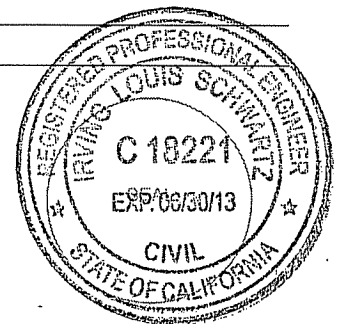
A description of the physical condition of the monument as found and as set or reset:

Set NW and SE (2 corners) on Lot 295, 296 and 297, 16 OS 97, See Exhibit "A".

SURVEYOR'S STATEMENT

This Corner Record was prepared by me or under my direction in conformance with the Land Surveyor's Act on MAY 31, 2012.

Signed [Signature] P.L.S. or R.C.E. No.: 18221



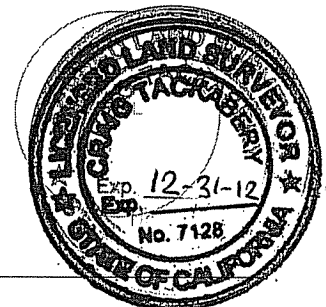
COUNTY SURVEYOR'S STATEMENT

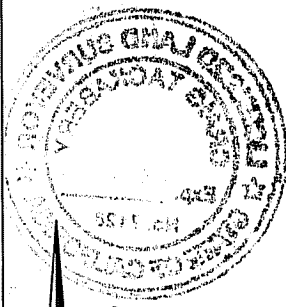
This Corner Record was received JUNE 1, 2012 and examined and filed JULY 5, 2012.

Signed [Signature] P.L.S. or R.C.E. No.: 7128

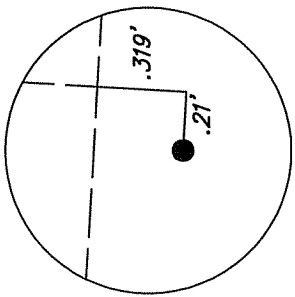
Title COUNTY SURVEYOR

County Surveyor's Comment _____

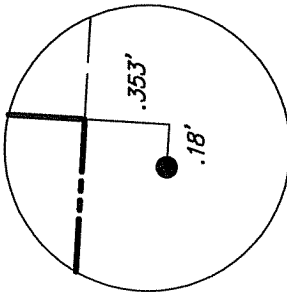




1"=30'



DETAIL 'A'
PER 16 OS 97
NOT TO SCALE



DETAIL 'B'
PER 16 OS 97
NOT TO SCALE

LEGEND

- SET 3/4" IRON PIPE & YELLOW CAP "R.C.E. 18221"
- FOUND 3/4" IRON PIPE & YELLOW CAP "LS 3775" PER 16 OS 97
- FOUND 3/4" IRON PIPE & YELLOW CAP "LS 3971"

REFERENCES:

- ① 13 OS 79

NOTE:

ALL DIMENSIONS AND BEARINGS SHOWN HEREON ARE PER 16 OS 97 EXCEPT AS NOTED OTHERWISE.

DATE: 5/31/2012
FILE: 8669CR.dwg
PAGE 2 OF 2

A.P.N. 157-122-31

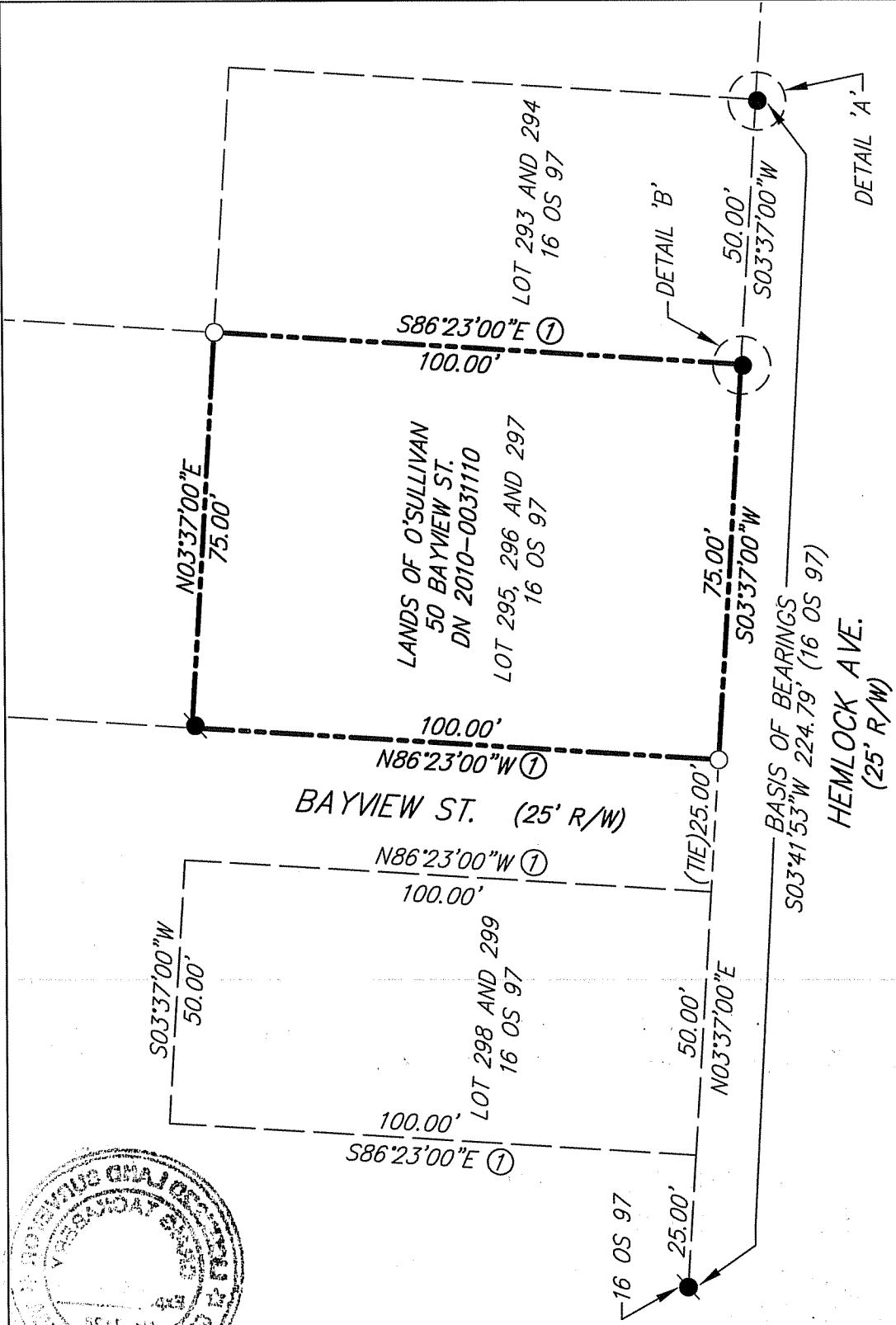


EXHIBIT A



ILS ASSOCIATES, INC.®
CIVIL ENGINEERING AND LAND SURVEYING

79 GALLI DRIVE, SUITE A NOVATO, CA 94949-5717 (415)883-9200 FAX (415)883-2763