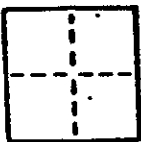


# CORNER RECORD

COUNTY OF MARIN T. \_\_\_\_\_ R. \_\_\_\_\_ MERIDIAN CALIFORNIA

CORNER TYPE: GOVT. CORNER  MEANDER  RANCHO  CONTROL  OTHER

CORNER IDENTIFICATION - DATE OF VISIT \_\_\_\_\_ 19\_\_\_\_



CORNER - LEFT AS FOUND  FOUND AND TAGGED  REESTABLISHED OBLITERATED CORNER  RESULT

PHYSICAL DESCRIPTION OF CORNER FOUND; EVIDENCE AND METHOD USED TO IDENTIFY OR REESTABLISH

A.P. No. 157-051-01 & 157-061-41

Novato

PHYSICAL DESCRIPTION OF MONUMENTS RESULT OR PERPETUATED

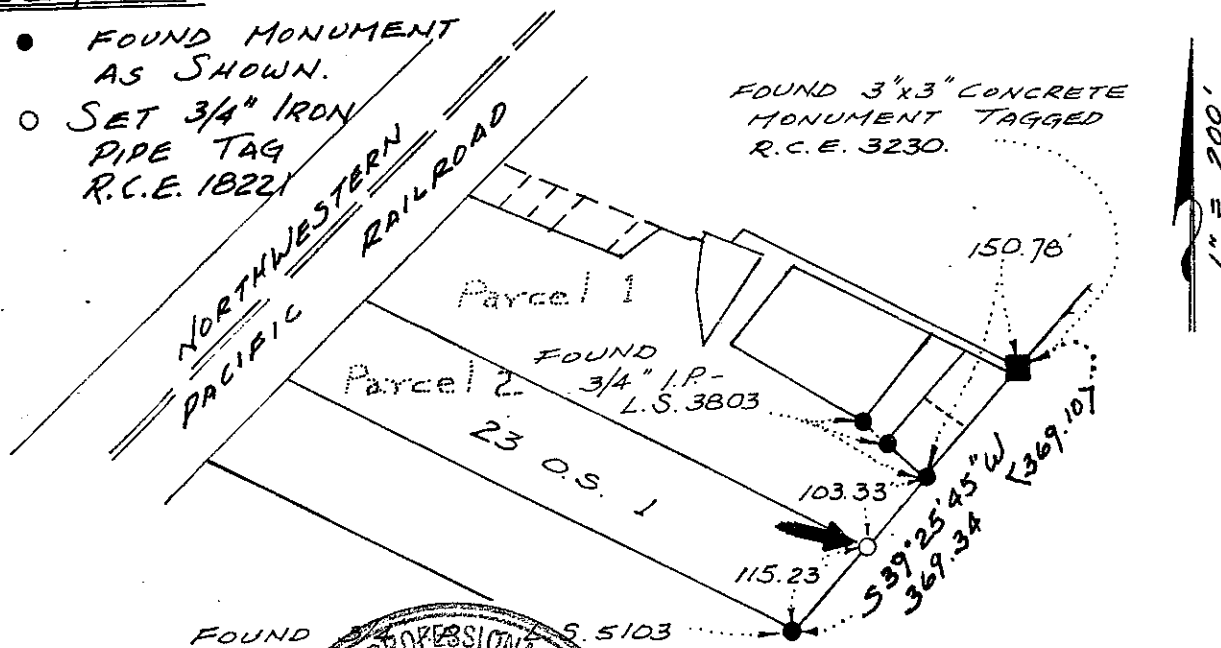
SET 3/4" IRON PIPE WITH TAG R.C.E. 18221 FOR THE SOUTHERLY CORNER OF PARCEL 1, AS SHOWN ON RECORD OF SURVEY, BOOK 23 OFFICIAL SURVEYS, PAGE 1, MARIN COUNTY RECORDS, BLACK POINT

CALIFORNIA COORDINATE SYSTEM ORDER: FIRST  SECOND  THIRD   
STATIONS USED: NGS (USC & GS)  STATE  COUNTY  OTHER  STATION \_\_\_\_\_ STATION \_\_\_\_\_  
ZONE \_\_\_\_\_ ELEVATION \_\_\_\_\_ NORTHINGS (Y) \_\_\_\_\_ EASTINGS (X) \_\_\_\_\_

SKETCH: (Include reference tie or witness points, remarks and topo of area)

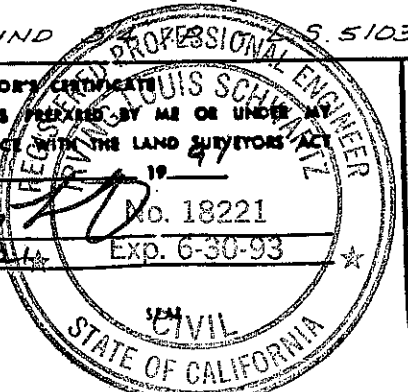
## LEGEND

- FOUND MONUMENT AS SHOWN.
- SET 3/4" IRON PIPE TAG R.C.E. 18221



SURVEYOR'S CERTIFICATE  
THIS CORNER RECORD WAS PREPARED BY ME OR UNDER MY DIRECTION IN CONFORMANCE WITH THE LAND SURVEYORS ACT ON DEC. 26 1992

SIGNED: [Signature] No. 18221  
L.S. or R.C.E. No. 18221 Exp. 6-30-93



COUNTY SURVEYOR'S OFFICE  
THE CORNER RECORD WAS RECEIVED AND EXAMINED AND FILED

BY: \_\_\_\_\_  
TITLE: \_\_\_\_\_  
DOCUMENT No. \_\_\_\_\_  
STATEMENT ON BACK OF SHEET NO. 1

