

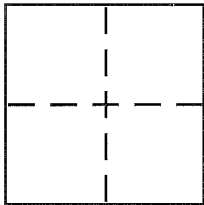
CORNER RECORD

Document Number APN 155-561-03

City of Novato

County of Marin, California

Brief Legal Description Reset street monument @ intersection of Kelly Ct. & Randolph Drive



CORNER TYPE

Government Corner Control
 Meander Property
 Rancho Other
 Date of Survey 2-28-2013

COORDINATES (Optional)

N. _____
 E. _____
 Zone _____ NAD27 NAD83
 NAD83 Epoch _____
 Elev. _____
 Vert. Datum: NGVD29 NAVD88
 Meas. Units: Metric Imperial

Corner - Left as found Found and tagged Established Reestablished Rebuilt

Identification and type of corner found: Evidence used to identify or procedure used to establish or reestablish the corner:
Centerline street monument at the intersection of Kelly Ct. and Randolph Drive, monument was not
found but destroyed during construction. Monument was reestablished using "map of Meadow Park Phase One"
recorded in bk. 2002 maps at page 134.

A description of the physical condition of the monument as found and as set or reset: Monument was not found. Reset a
2" brass disk stamped Novato, RCE 31909.

SURVEYOR'S STATEMENT

This Corner Record was prepared by me or under my direction in conformance with
 the Land Surveyor's Act on APRIL 26, 2013

Signed John S. Lacey P.L.S or R.C.E. No. 31909



COUNTY SURVEYOR'S STATEMENT

This Corner Record was received APRIL 30, 2013

and examined and filed MAY 6, 2013

Signed Richard G. Simonitch P.L.S or R.C.E. No. 7821

Title DEPUTY COUNTY SURVEYOR

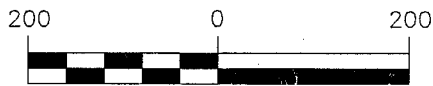
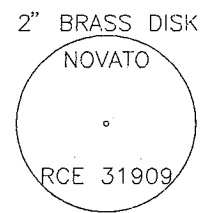
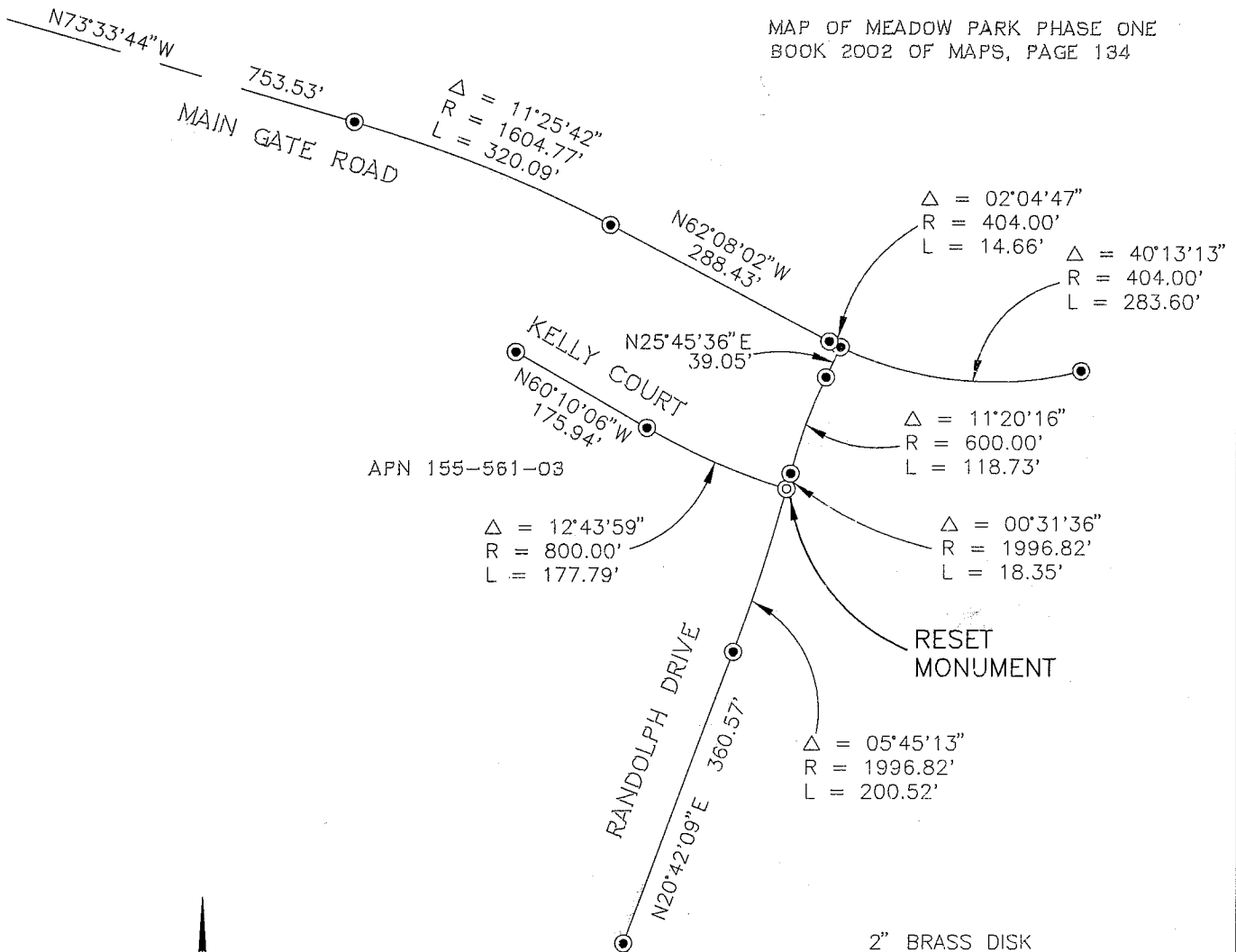


County Surveyor's Comment _____

LEGEND

- FOUND CITY STANDARD STREET MONUMENT
- ⊙ RESET 2" BRASS DISK STAMPED "NOVATO-RCE 31909"

MAP OF MEADOW PARK PHASE ONE
BOOK 2002 OF MAPS, PAGE 134



SCALE IN FEET
1" = 200 Ft.

PREPARED BY

Brelje & Race
CONSULTING CIVIL ENGINEERS
475 Aviation Blvd. - Suite 120 - Santa Rosa, CA 95403 - 707-576-1322
www.brce.com

#3672