

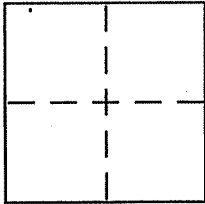
CORNER RECORD

Document Number APN 155-320-01 to -36

City of San Rafael

County of Marin, California

Brief Legal Description Parcel One and Two, 20 PM 9



CORNER TYPE

Government Corner Control
Meander Property
Rancho Other
Date of Survey 6-22-09

COORDINATES (Optional)

N. _____
E. _____
Zone _____ NAD27 NAD83
NAD83 Epoch _____
Elev. _____
Vert. Datum: NGVD29 NAVD88
Meas. Units: Metric Imperial

Corner - Left as found Found and tagged Established Reestablished Rebuilt

Identification and type of corner found: Evidence used to identify or procedure used to establish or reestablish the corner:

See page 2 of 2

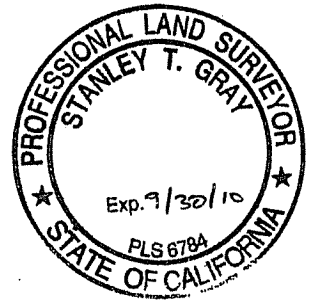
A description of the physical condition of the monument as found and as set or reset:

See page 2 of 2

SURVEYOR'S STATEMENT

This Corner Record was prepared by me or under my direction in conformance with the Land Surveyor's Act on 7/14/2009

Signed [Signature] P.L.S or R.C.E. No. 6784



COUNTY SURVEYOR'S STATEMENT

This Corner Record was received JULY 24, 2009

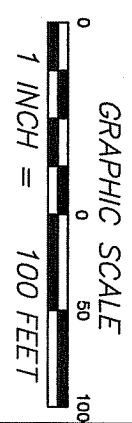
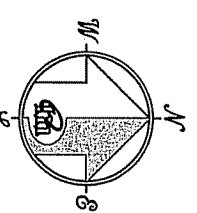
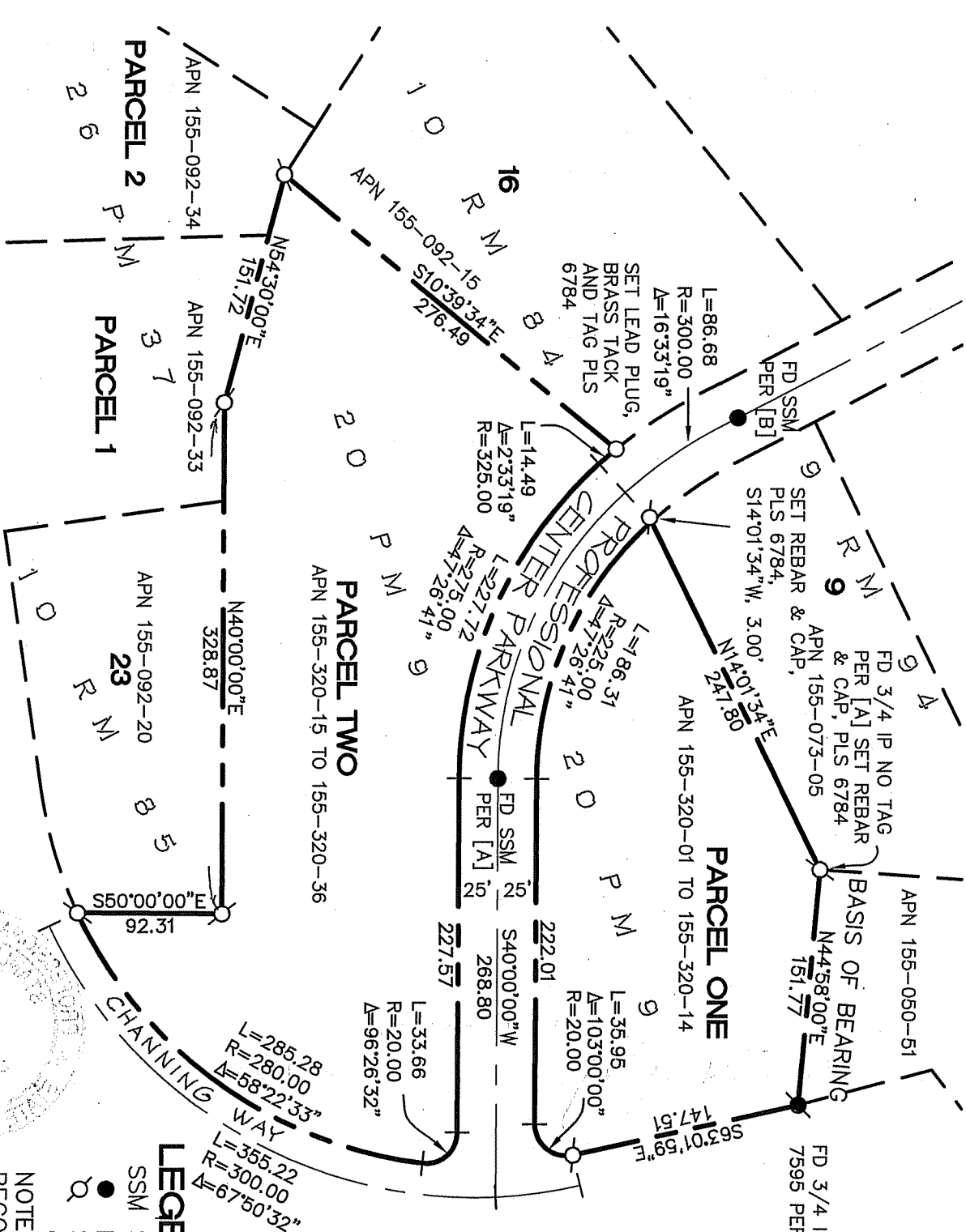
and examined and filed AUGUST 26, 2009

Signed [Signature] P.L.S or R.C.E. No. 7128

Title COUNTY SURVEYOR



County Surveyor's Comment _____



EASEMENTS NOT SHOWN. NO TITLE REPORT PROVIDED.

LEGEND

- SSM STANDARD STREET MONUMENT
- FOUND CITY MONUMENT
- SET 5/8" REBAR WITH CAP, PLS 6784

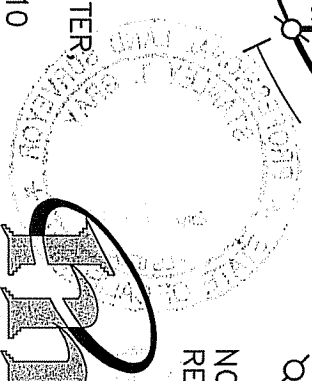
NOTE
 RECORD=MEASURED

CORNER RECORD

REFERENCE

[A] PARCEL MAP - PINNACLE FILED FOR RECORD FEBRUARY 2, 1982 IN BOOK 20 OF PARCEL MAPS, AT PAGE 9, MARIN COUNTY RECORDS.

[B] MAP OF PROFESSIONAL CENTER, UNIT 2, FILED FOR RECORD NOVEMBER 1, 1960 IN VOLUME 10 OF MAPS, AT PAGE 84, MARIN COUNTY RECORDS.



MERIDIAN SURVEYING, INC.
 1812 UNION STREET
 SAN FRANCISCO, CA 94123
 (415) 440-4131
 info@meridiansurveying.com

777 GRAND AVENUE, SUITE 202
 SAN RAFAEL, CA 94901
 (415) 456-5450