

CORNER RECORD

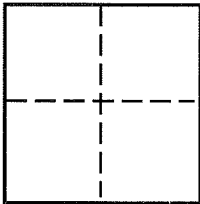
Document Number APN 155-300-19

City of San Rafael

County of Marin, California

Brief Legal Description: Lands of Las Gallinas Sanitation District shown on Vol. 19 of Maps at Page 9 (Sheet 4)

Marin County Records - (APN 155-300-19)



CORNER TYPE

- Government Corner
- Meander
- Rancho
- Control
- Property
- Other

Date of Survey: March 29, 2016

COORDINATES (Optional)

Lat 38°01'06.13"N
 Long 122°31'35.52"W
 Zone NAD27 NAD83
 NAD83 Epoch
 Elev.
 Vert. Datum: NGVD29 NAVD88
 Meas. Units: Metric Imperial

Corner - Left as found Found and tagged Established Reestablished Rebuilt

Identification and type of corner found: Evidence used to identify or procedure used to establish or reestablish the corner:

I found the street monuments on Smith Ranch Road shown on the map of Captains Cove Condominium (Vol. 17-RM-40) in good condition. The distance between them measured within 0.02' of the record distance 286.82'. I proceeded to set the four corners around the lands of Las Gallinas Valley Sanitation District parcel from that baseline.

A description of the physical condition of the monument as found and as set or reset: The monuments in Smith Ranch Road were 2-1/2" brass disks stamped "RCE 12094", and appeared to be in good condition.

SURVEYOR'S STATEMENT

This Corner Record was prepared by me or under my direction in conformance with the Land Surveyor's Act on April 1, 2016

Signed _____ P.L.S.. No. 4760

COUNTY SURVEYOR'S STATEMENT

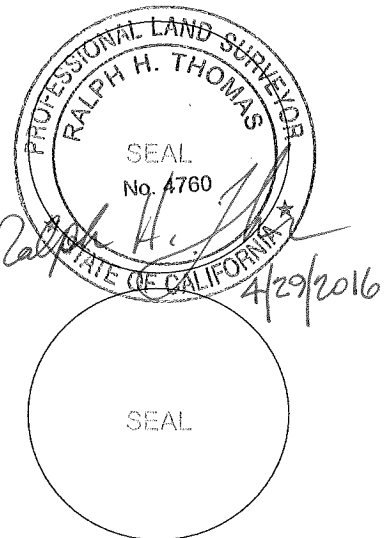
This Corner Record was received APRIL 11, 2016

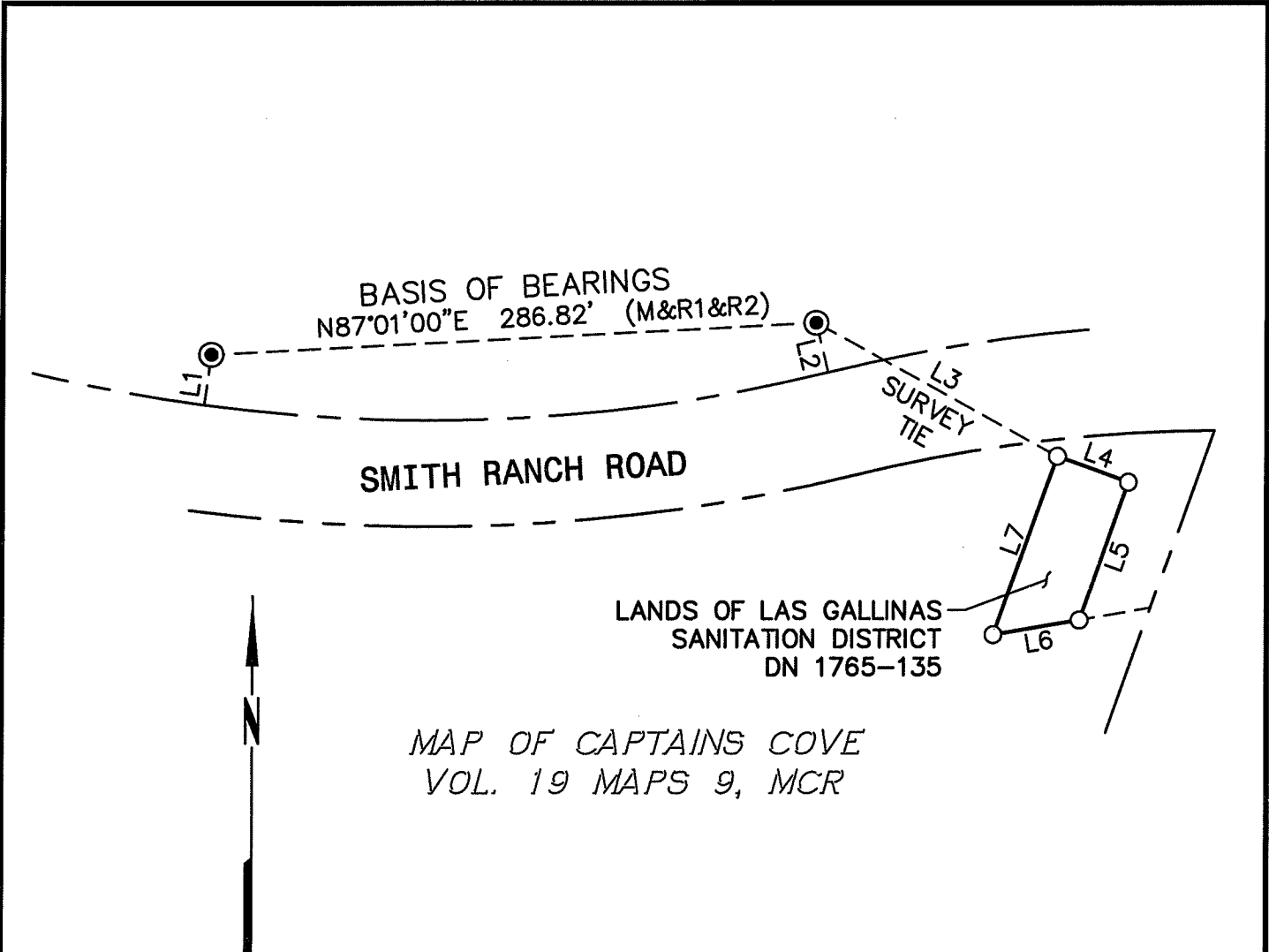
and examined and filed _____

Signed _____ P.L.S. OR R.C.E. No. _____

Title _____

County Surveyor's Comment _____





MAP OF CAPTAINS COVE
VOL. 19 MAPS 9, MCR

REFERENCE DATA

- R1 MAP OF CAPTAINS COVE - A CONDOMINIUM FILED IN VOL. 19 OF MAPS AT PAGE 9, MARIN COUNTY RECORDS
- R2 MAP OF "SMITH RANCH-SOUTHERLY PORTION" FILED IN VOL. 17 OF MAPS AT PAGE 40, MARIN COUNTY RECORDS

LINE TABLE			
LINE	DIRECTION	LENGTH	REF
L1	$N07^{\circ}40'00''E$	24.00'	(M&R1)
L2	$N13^{\circ}38'00''W$	24.00'	(M&R1)
L3	$S61^{\circ}18'50''E$	131.11'	(M&R1 CALC)
L4	$S70^{\circ}09'36''E$	36.00'	(M&R1)
L5	$S19^{\circ}50'24''W$	69.00'	(M&R1)
L6	$S80^{\circ}25'24''W$	41.33'	(M&R1)
L7	$N19^{\circ}50'24''E$	89.30'	(M&R1)

LEGEND

- FOUND 2 1/2" BRASS DISK IN MONUMENT WELL, TAGGED RCE 12094
 - SET 3/4" IRON PIPE TAGGED PLS 4760, SET PER 17-RM-40
- move* (handwritten note with arrow pointing to the second legend item)

Plot Apr 29, 2016 at 6:29am