

CORNER RECORD

Document Number

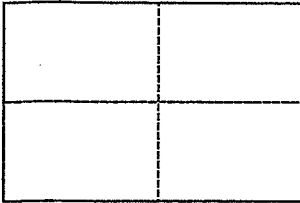
APW 155-153-02

City of San Rafael County of Marin, California

Brief Legal Description Lot 67, Volume 12 of Maps, at Page 11, Marin County Records

CORNER TYPE

**COORDINATES
(Optional)**



Government Corner Control North _____
 Meander Property East _____
 Rancho Other Zone _____ Datum _____
 Date of Survey November 19, 2004 Elev. _____

Corner _____ Left as found Found and tagged Established Reestablished Rebuilt

Identification and type of corner found: Evidence used to identify or procedure used to establish or reestablish the corner:

Property corner locations based on found Record Monuments per Volume 12, Page 11 as shown on attached plat. Established

Corner locations and set Magnetic Nail in Asphalt Drive.

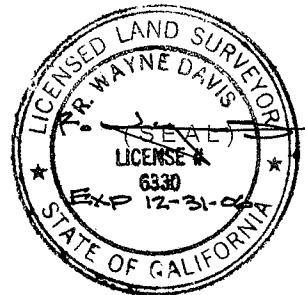
A description of the physical condition of the monument as found and as set or reset: _____

Found Street Monuments in good condition, record distance fit well between monuments.

SURVEYOR'S STATEMENT

This Corner Record was prepared by me or under my direction in conformance with the Land Surveyors' Act on December 21, 2004

Signed _____ L.S. or R.C.E. Number LS 6330



COUNTY SURVEYOR'S STATEMENT

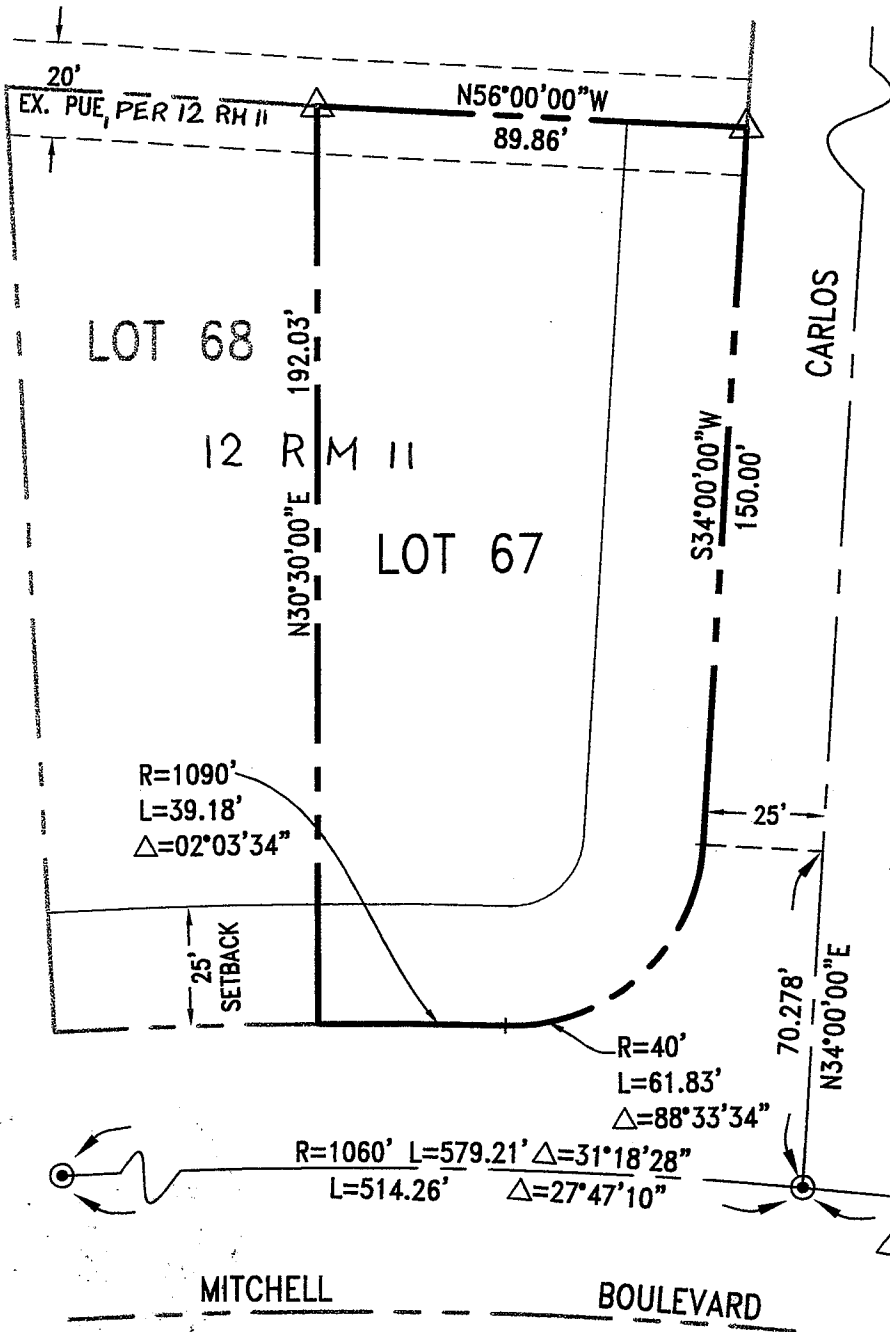
This Corner Record was received JANUARY 10, 2005

and examined and filed FEBRUARY 14, 2005

Signed [Signature] Title COUNTY SURVEYOR



County Surveyor's Comment _____



LEGEND:

- △ SET MAG NAIL
- ⊙ FOUND STANDARD STREET MONUMENT

R=1090'
L=39.18'
Δ=02°03'34"

25'
SETBACK

R=40'
L=61.83'
Δ=88°33'34"

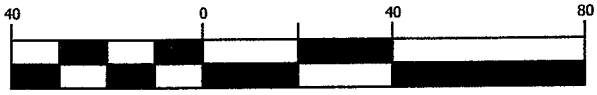
R=1060' L=579.21' Δ=31°18'28"
L=514.26' Δ=27°47'10"

L=65.15'
Δ=3°31'18"

S50°30'00"E
199.32'
BASIS OF BEARING



Graphic Scale (in feet)



1 inch = 40 ft.

APN# 155-153-02



R.W. DAVIS & ASSOCIATES
LAND SURVEYORS

790 DeLong Ave.
Suite 2
Novato CA 94945
L.S. 6330
© 2001

Tel. (415) 898-9099
Fax (415) 898-2499
Email:
RWD@CSWST2.COM

REV.	12/21/04
	SCALE: 1"=50'
MAP OF NORTHGATE INDUSTRIAL PARK	
VOLUME 12 OF MAPS, PAGE 11	
NOVATO	MARIN CALIFORNIA