

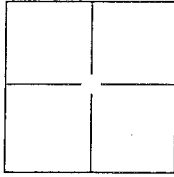
# CORNER RECORD

Document Number APN 155-081-12

City of San Rafael

County of Marin, California

Brief Legal Description Lot 12-10 RM 51



### CORNER TYPE

Government Corner  Control   
 Meander  Property   
 Rancho  Other

Date of Survey March 28, 2014

### COORDINATES(Optional)

N. \_\_\_\_\_  
 E. \_\_\_\_\_  
 Zone \_\_\_\_\_ NAD27  NAD83   
 NAD83 Epoch \_\_\_\_\_  
 Elev. \_\_\_\_\_  
 Vert. Datum: NGVD29  NADV88   
 Meas. Units: Metric  Imperial

Corner - Left as found  Found and tagged  Established  Reestablished  Rebuilt

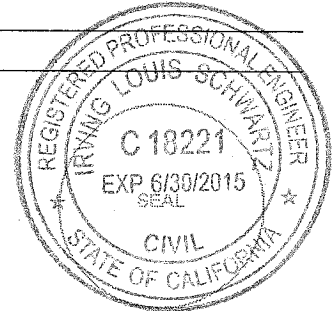
Identification and type of corner found: Evidence used to identify or procedure used to establish or reestablish the corner:  
 Found (2) brass pin in concrete in monument well in centerline Joseph Court as shown on 10 RM 51. Measured distance between of 250.00' same as record. Held as Basis of Bearings for survey taken as N 89°51'00" E.

A description of the physical condition of the monument as found and as set or reset:  
 Found 3/4" iron pipe, not tagged, below asphalt, at southeasterly and southwesterly corners at record locations as shown on Exhibit A, Page 2 of 2.

### SURVEYOR'S STATEMENT

This Corner Record was prepared by me or under my direction in conformance with the Land Surveyor's Act on April 1, 2014

Signed [Signature] P.L.S. or R.C.E. No.: 18221



### COUNTY SURVEYOR'S STATEMENT

This Corner Record was received APR. 07, 2014 and examined and filed MAY 2ND 2014

Signed [Signature] P.L.S. or R.C.E. No.: 7821

Title DEPUTY

County Surveyor's Comment \_\_\_\_\_





**ILS ASSOCIATES, INC.®**  
 Civil Engineering & Land Surveying  
 79 Galli Drive, Suite A  
 Novato, Ca 94949-5717  
 (415)883-9200 FAX (415)883-2763

DRAWN:

SW

JOB NO:

8854

DATE:

4/1/2014

PAGE NO.

2 OF 2

LEGEND

- FOUND 3/4" IRON PIPE NOT TAGGED UNDER ASPHALT
- FOUND STANDARD STREET MONUMENT, PIN IN CONCRETE

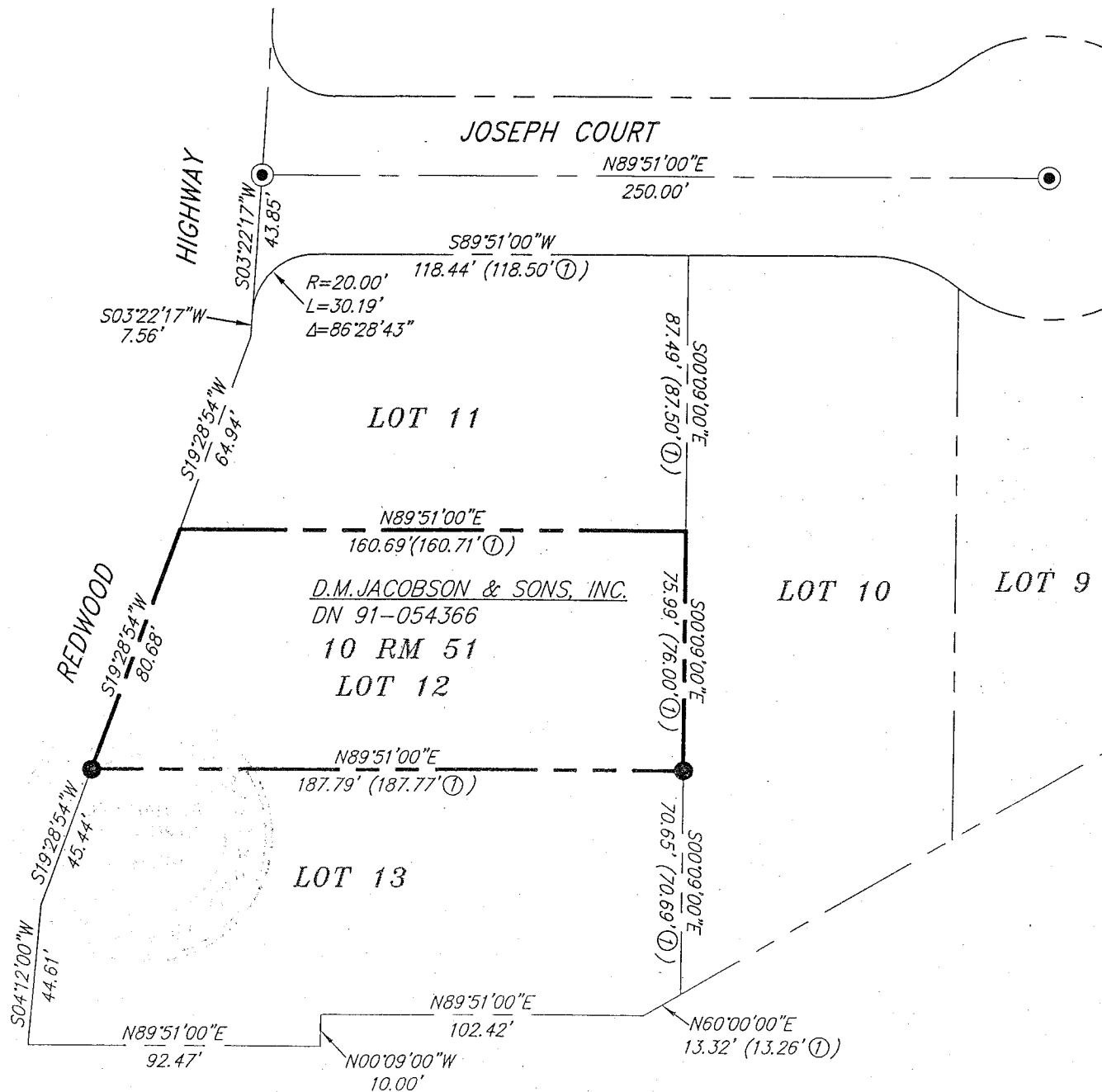
EXHIBIT A

REFERENCES

- ① MAP OF COMMONWEALTH LIGHT INDUSTRIAL SUBDIVISION / BOOK 10 R.M. PAGE 51



SCALE: 1" = 50'



APN 155-081-12