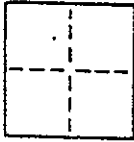


# CORNER RECORD

COUNTY OF Marin T. 1 R. 33 SEC. 8 M.D.B. 8 MERIDIAN CALIFORNIA  
 CORNER TYPE: GOV'T. CORNER ☐ MEANDER ☐ RANCHO ☐ CONTROL ☐ OTHER ☐  
 CORNER IDENTIFICATION — DATE OF VISIT 19



A.P. # 153-32

CORNER — LEFT AS FOUND ☐ FOUND AND TAGGED ☐ REESTABLISHED OBLITERATED CORNER ☒ REBUILT ☐

PHYSICAL DESCRIPTION OF CORNER FOUND; EVIDENCE AND METHOD USED TO IDENTIFY OR REESTABLISH

Rowland Plaza Subdivision (20 R.M. 33) street monument obliterated during construction activities.  
 Monument reestablished from other existing monuments within subdivision, as shown below.

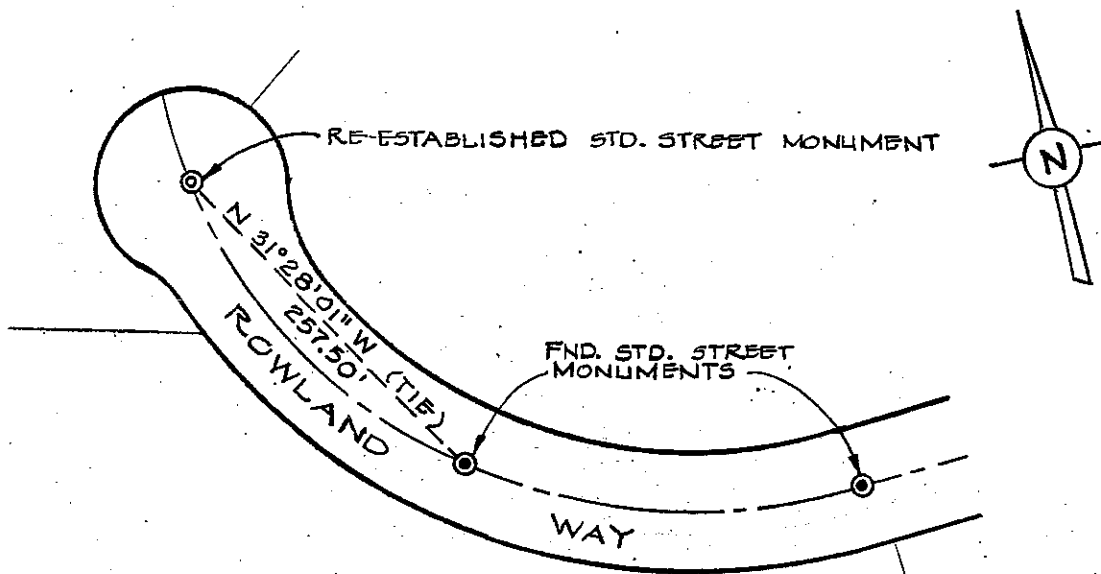
PHYSICAL DESCRIPTION OF MONUMENTS REBUILT OR PERPETUATED

Cities and County of Marin Standard Street Monument stamped RCE 10759

Novato

CALIFORNIA COORDINATE SYSTEM ORDER: FIRST ☐ SECOND ☐ THIRD ☐  
 STATIONS USED: NGS (USC & GS) ☐ STATE ☐ COUNTY ☐ OTHER ☐ STATION                      STATION                       
 ZONE                      ELEVATION                      NORTHINGS (Y)                      EASTINGS (X)                     

SKETCH: (include reference tie or witness points, remarks and topo of area)



THIS CORNER RECORD WAS PREPARED BY ME OR UNDER MY DIRECTION IN CONFORMANCE WITH THE LAND SURVEYORS ACT ON August 4 1992

SIGNED: [Signature]  
 L.S. or R.C.E. No. RCE 10759

SEAL

THE CORNER RECORD WAS RECEIVED 8-28-92 AND EXAMINED AND FILED 8-28-92

DOCUMENT No. 828

STATEMENT ON 8-28-92

