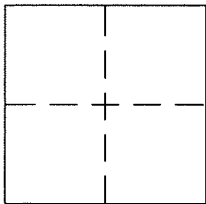


# CORNER RECORD

Document Number APN 153-141-31

City of NOVATO County of MARIN, California

Brief Legal Description LOT 8, SUB. OF LOTS 1 & 2 FRANKLIN PLACE, 2 MAPS 20, MARIN COUNTY RECORDS  
A.P.N. 153-141-31



## CORNER TYPE

Government Corner ☐ Control ☐  
Meander ☐ Property ☒  
Rancho ☐ Other ☐  
Date of Survey 8/3/2016

## COORDINATES (Optional)

N. \_\_\_\_\_  
E. \_\_\_\_\_  
Zone \_\_\_\_\_ NAD27 ☐ NAD83 ☐  
NAD83 Epoch \_\_\_\_\_  
Elev. \_\_\_\_\_  
Vert. Datum: NGVD29 ☐ NAVD88 ☐  
Meas. Units: Metric ☐ Imperial ☒

Corner - Left as found ☐ Found and tagged ☐ Established ☐ Reestablished ☒ Rebuilt ☐

Identification and type of corner found: Evidence used to identify or procedure used to establish or reestablish the corner:  
FOUND 3 CORNERS OF LOT 8 SET PER RECORD OF SURVEY 36 O.S. 14. SEE PAGE 2 FOR DETAILS.

A description of the physical condition of the monument as found and as set or reset: \_\_\_\_\_  
SEE PAGE 2

## SURVEYOR'S STATEMENT

This Corner Record was prepared by me or under my direction in conformance with  
the Land Surveyor's Act on August 24 2016  
Signed Dylan M. Gonsalves P.L.S. or R.C.E. No. 8475

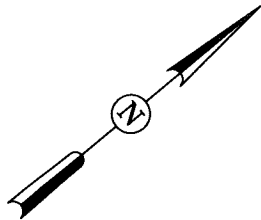


## COUNTY SURVEYOR'S STATEMENT

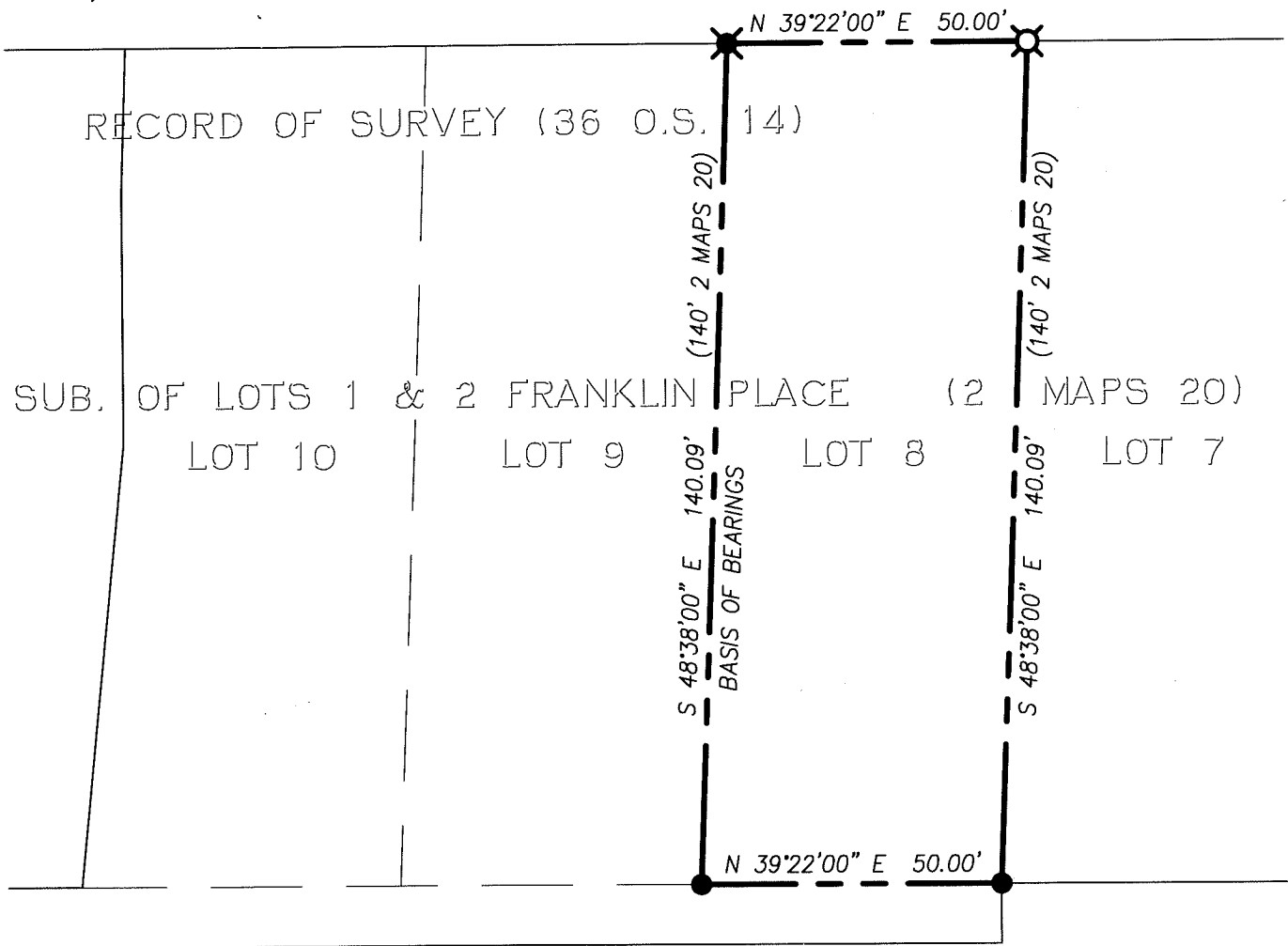
This Corner Record was received SEPTEMBER 8, 2016  
and examined and filed OCTOBER 28, 2016  
Signed R. Simonitch P.L.S. or R.C.E. No. 7821  
Title County Surveyor



County Surveyor's Comment \_\_\_\_\_



**LAMONT AVENUE**  
(80' R/W)



**GENERAL NOTES**

1. DISTANCES ARE IN FEET AND DECIMALS THEREOF.
2. ALL DISTANCES: (RECORD) = MEASURED, UNLESS OTHERWISE NOTED.

**BASIS OF BEARINGS**

THE SOUTHWEST LINE OF LOT 8, 2 MAPS 20, HAVING BEARING SOUTH 48° 38' 00" EAST PER 36 O.S. 14, FOUND MONUMENTED AS SHOWN HEREON.

**LEGEND**

- BOUNDARY ————
- ABANDONED LOT LINE ————
- FND 3/4" IP & TAG "LS 4397" ●
- PER 36 OS 14
- FND 1/2" DIA. DRILL HOLE IN CONCRETE ✕
- PER 36 OS 14
- SET NAIL & 3/4" BRASS TAG "PLS 8475" ✕
- IN FENCE POST CONCRETE
- RECORD INFORMATION AS NOTED ( )

