

CORNER RECORD

Document Number 152-151-19

City of Novato

County of Marin, California

Brief Legal Description Parcel 4, Parcel Map filed in Book 9 of Parcel Maps at Page 20



CORNER TYPE

Government Corner Control
Meaneder Property
Rancho Other
Date of Survey June 13, 2013

COORDINATES (Optional)

N. _____
E. _____
Zone _____ NAD27 NAD83
NAD83 Epoch _____
Elev. _____
Vert. Datum: NGVD29 NAVD88
Meas. Units: Metric Imperial

Corner – Left as found Found and tagged Established Reestablished Rebuilt

Identification and type of corner found: Evidence used to identify or procedure used to establish or reestablish the corner:
Street monuments per Book 9 Parcel Maps, Page 20 were found in record position and used to re-establish the easterly line of Parcel 4 of said map.

A description of the physical condition of the monument as found and as set or reset: 1/2" iron pipes LS 7237

SURVEYOR'S STATEMENT

This Corner Record was prepared by me or under my direction in conformance with the Land Surveyor's Act on June 13, 2013
Signed Michael E Ford P.L.S. or R.C.E. No. 7237

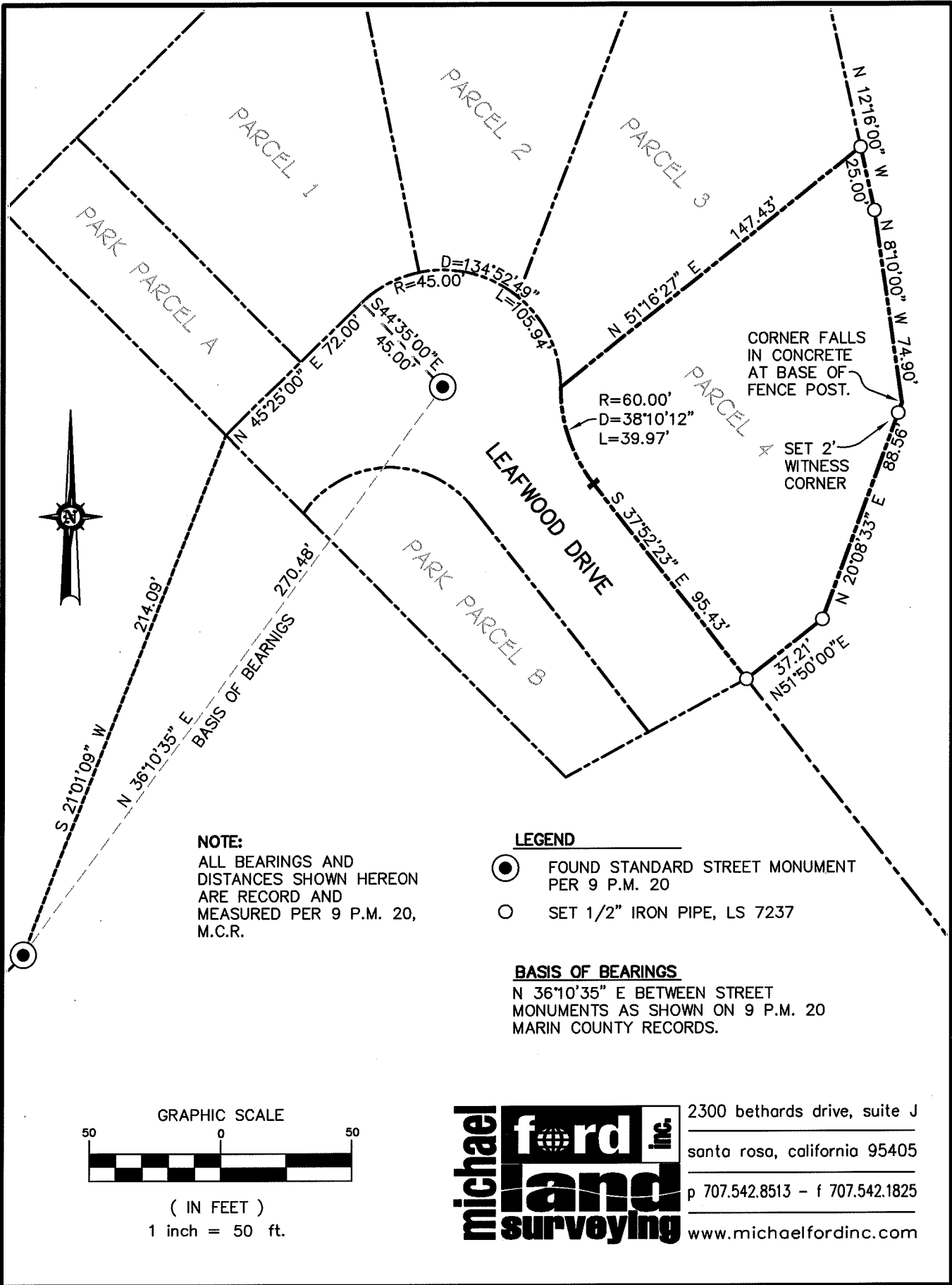


COUNTY SURVEYOR'S STATEMENT

This Corner Record was received JUNE 24, 2013
and examined and filed July 29, 2013
Signed Richard G. Simonitch P.L.S. or R.C.E. No. 7821
Title DEPUTY CO. SURVEYOR



County Surveyor's Comment



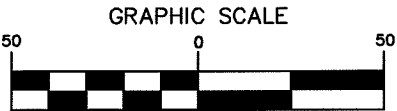
NOTE:
 ALL BEARINGS AND DISTANCES SHOWN HEREON ARE RECORD AND MEASURED PER 9 P.M. 20, M.C.R.

LEGEND

- FOUND STANDARD STREET MONUMENT PER 9 P.M. 20
- SET 1/2" IRON PIPE, LS 7237

BASIS OF BEARINGS

N 36°10'35" E BETWEEN STREET MONUMENTS AS SHOWN ON 9 P.M. 20 MARIN COUNTY RECORDS.



(IN FEET)
 1 inch = 50 ft.



2300 bethards drive, suite J
 santa rosa, california 95405
 p 707.542.8513 - f 707.542.1825
 www.michaelfordinc.com