

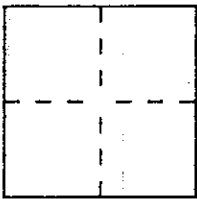
CORNER RECORD

Document Number A.P.N. 152-012-05

City of NOVATO

County of MARIN, California

Brief Legal Description PARCEL 2 PER 4 O.S. 82



CORNER TYPE

Government Corner Control
Meander Property
Rancho Other
Date of Survey NOV. 18, 1997

COORDINATES (Optional)

N. _____
E. _____
Zone _____ Datum _____
Elev. _____

Corner — Left as found Found and tagged Established Reestablished Rebuilt

Identification and type of corner found: Evidence used to identify or procedure used to establish or reestablish the corner:

= SEE OVER =

A description of the physical condition of the monument as found and as set or reset:

= SEE OVER =

SURVEYOR'S STATEMENT

This Corner Record was prepared by me or under my direction in conformance with the Land Surveyors' Act on JAN. 19 19 98

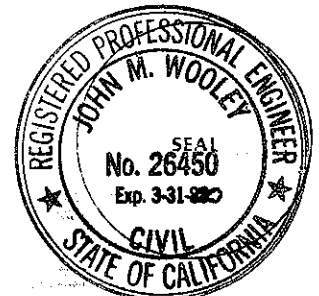
Signed David Contreras L.S. or R.C.E. Number 5065



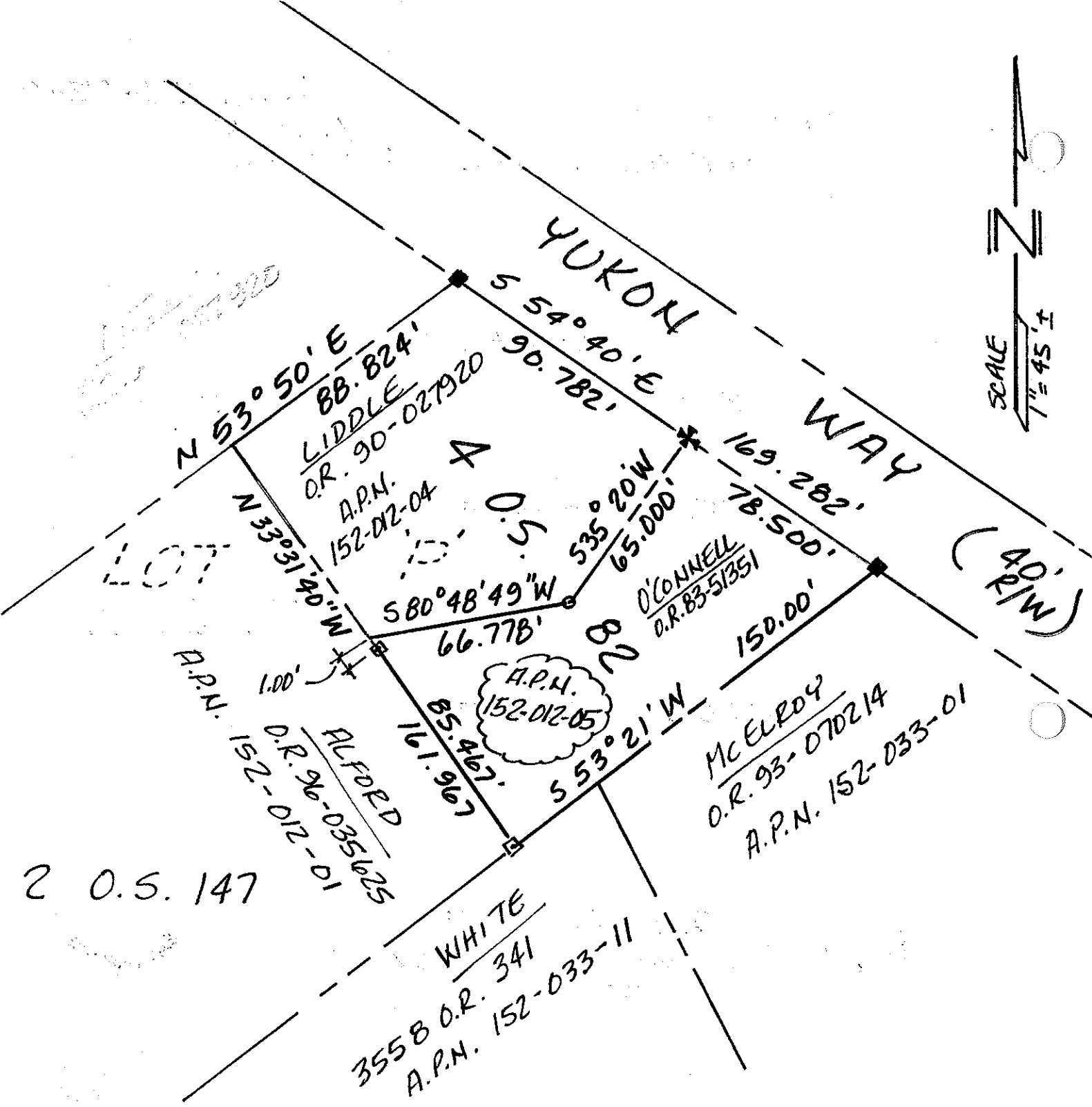
COUNTY SURVEYOR'S STATEMENT

This Corner Record was received January 21 19 98 and examined and filed JANUARY 29 19 98

Signed John M. Wooley Title Deputy



County Surveyor's Comment _____



- = FD. RED WOOD 2"x2" HUB, NO TAG.
- ✚ = FD. CROSS CHISELED INTO CONC. STEP
- = SET 1/2" REBAR & CAP, L.S. 506S
- ◻ = SET RED WOOD 2"x2" HUB, L.S. 506S