

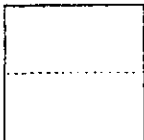
CORNER RECORD

CITY OF NOVATO

COUNTY OF MARIN T. _____ R. _____ MERIDIAN CALIFORNIA

CORNER TYPE: GOV'T. CORNER MEANDER RANCHO CONTROL OTHER

CORNER IDENTIFICATION - DATE OF VISIT OCT. 16 1989



BEING THE SOUTHWESTERLY CORNER OF PARCEL B, PARCEL MAP IN THE CITY OF NOVATO, 24 P.M. 4, MARIN COUNTY RECORDS.

CORNER - LEFT AS FOUND FOUND AND TAGGED REESTABLISHED OBLITERATED CORNER REBUILT

PHYSICAL DESCRIPTION OF CORNER FOUND; EVIDENCE AND METHOD USED TO IDENTIFY OR REESTABLISH

SEARCHED FOR BUT COULD NOT FIND THE SOUTHWESTERLY CORNER OF SAID PARCEL, HELD FOUND EX. WELL MONUMENTS PER SAID PARCEL MAP AND RE-ESTABLISHED OBLITERATED CORNER AS SHOWN ON SKETCH BELOW.

PHYSICAL DESCRIPTION OF MONUMENTS REBUILT OR PERPETUATED

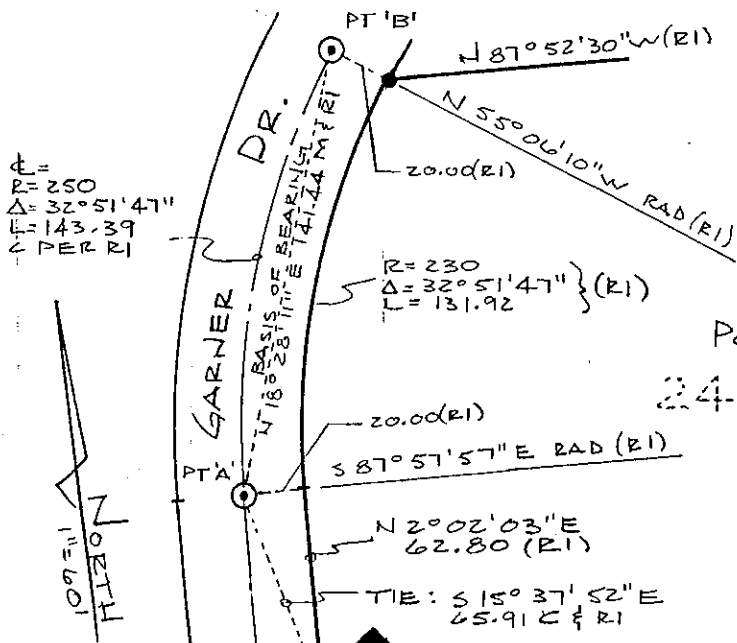
SET 3/4" IRON PIPE WITH TAG, L.S. 5296

CALIFORNIA COORDINATE SYSTEM ORDER: FIRST SECOND THIRD
STATIONS USED: NGS (USC & GS) STATE COUNTY OTHER STATION _____ STATION _____
ZONE _____ ELEVATION _____ NORTHINGS (Y) _____ EASTINGS (X) _____

(Fold)

SKETCH: (Include reference tie or witness points, remarks and topo of area)

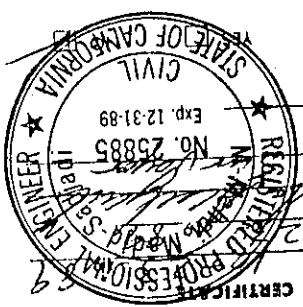
JN 89-314-M



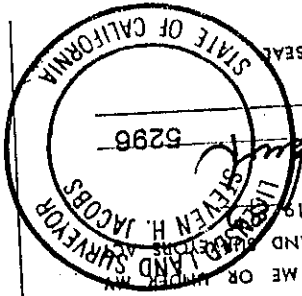
BASIS OF BEARING
PT A' TO PT B' BEING $N 18^{\circ}28'11'' E$
 $141.44 M$ & CALCULATED FROM R1

- LEGEND
- O SET 3/4" IRON PIPE, TAGGED L.S. 5296
 - FD 3/4" I.P., R.C.E. 12247 FOUND NOT TIED
 - R1 24 P.M. 3
 - C CALCULATED
 - () RECORD
 - ⊙ FD WELL MON.
 - RAD RADIAL

PCL 'B'
24 P.M. 4



COUNTY SURVEYOR'S CERTIFICATE
THE CORNER RECORD WAS RECEIVED
AND EXAMINED AND FILED
BY: *[Signature]*
TITLE: *County*
DOCUMENT No. _____
STATEMENT ON BACK OF SHEET



SURVEYOR'S CERTIFICATE
THIS CORNER RECORD WAS PREPARED BY ME OR UNDER MY
DIRECTION IN CONFORMANCE WITH THE LAND
ON OCTOBER
SIGNED: *[Signature]*
LICENSE No.: 5296
L.S. No.: 5296
LICENSE EXPIRES 12-31-91

AP# 151-211-10

N 02°52'30"W (P1)