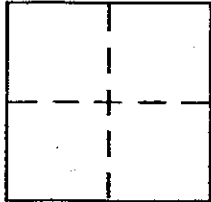


CORNER RECORD

Document Number A.P.N. 151-201-30

City of Novato County of Marin, California

Brief Legal Description Lot 320 Rancho Village Unit 10 14 RM 83



CORNER TYPE

Government Corner Control
 Meander Property
 Rancho Other
 Date of Survey _____

COORDINATES (Optional)

N. _____
 E. _____
 Zone _____ NAD27 NAD83
 NAD83 Epoch _____
 Elev. _____
 Vert. Datum: NGVD29 NAVD88
 Meas. Units: Metric Imperial

Corner - Left as found Found and tagged Established Reestablished Rebuilt

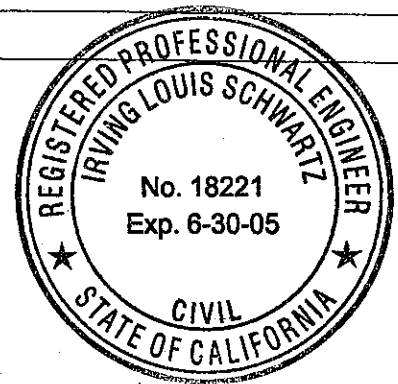
Identification and type of corner found: Evidence used to identify or procedure used to establish or reestablish the corner:
Found standard street monuments on the centerline of Monroe Court.

A description of the physical condition of the monument as found and as set or reset: _____
Set 3/4" iron pipe and tag "RCE 18221" at the southwest corner and a nail and tag "RCE 18221" at southerly and easterly corners.

SURVEYOR'S STATEMENT

This Corner Record was prepared by me or under my direction in conformance with the Land Surveyor's Act on APRIL 2, 2002

Signed [Signature] PLS or R.C.E. No. 18221



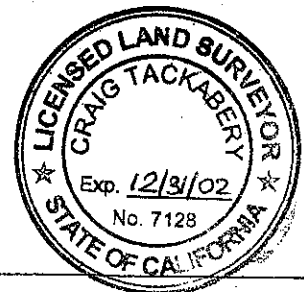
COUNTY SURVEYOR'S STATEMENT

This Corner Record was received APRIL 4, 2002

and examined and filed APRIL 9, 2002

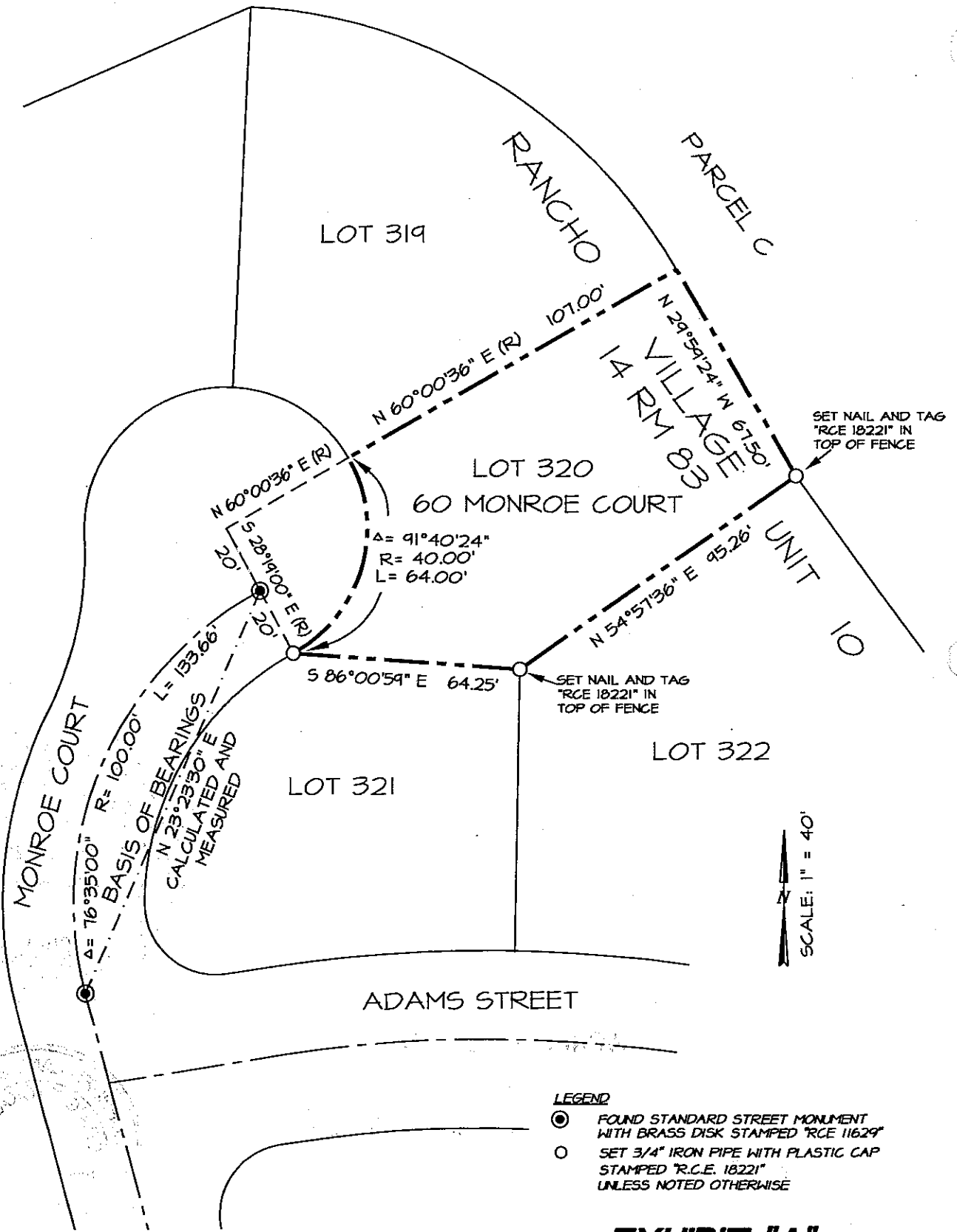
Signed [Signature] PLS or R.C.E. No. 7128

Title DEPUTY



County Surveyor's Comment _____

N:\PROJ217369\dwg\17369.dwg, 03/28/2002 11:36:36 AM; T.L. Schwartz, Assoc. Inc. -JeffH



SCALE: 1" = 40'

- LEGEND**
- FOUND STANDARD STREET MONUMENT WITH BRASS DISK STAMPED "RCE 11629"
 - SET 3/4" IRON PIPE WITH PLASTIC CAP STAMPED "R.C.E. 18221" UNLESS NOTED OTHERWISE

NOTE:
ALL DIMENSIONS SHOWN HEREON ARE PER 14 RM 83 UNLESS NOTED OTHERWISE

EXHIBIT "A"

ILL. SCHWARTZ ASSOCIATES, INC.®
CIVIL ENGINEERING AND LAND SURVEYING

DATE: 03/28/02
DWG FILE: 17369CREC.DWG

A.P.N. 151-201-30

79 GALLI DRIVE NOVATO, CA 94949 (415)883-9200 FAX 883-2763