

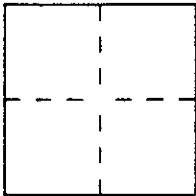
# CORNER RECORD

Document Number APN 151-162-02

City of NOVATO

County of MARIN, California

Brief Legal Description Lot 182 as shown on Volume 10 of Maps at Page 29



### CORNER TYPE

### COORDINATES (Optional)

Government Corner  Control   
 Meander  Property   
 Rancho  Other   
 Date of Survey \_\_\_\_\_

N. \_\_\_\_\_  
 E. \_\_\_\_\_  
 Zone \_\_\_\_\_ Datum \_\_\_\_\_  
 Elev. \_\_\_\_\_

Corner — Left as found  Found and tagged  Established  Reestablished  Rebuilt

Identification and type of corner found: Evidence used to identify or procedure used to establish or reestablish the corner:  
Found Subdivision Street monuments. Used street monuments as a basis to set Lot Corners.

A description of the physical condition of the monument as found and as set or reset:  
Set 3/4" iron pipe with Tag RCE 12094 at Lot Corners

### SURVEYOR'S STATEMENT

This Corner Record was prepared by me or under my direction in conformance with the Land Surveyors Act on March 6 1996.

Signed [Signature] L.S. or R.C.E. Number RCE 12094



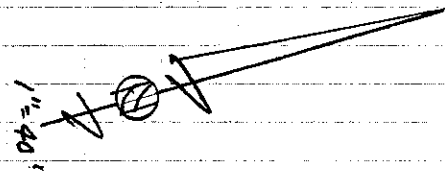
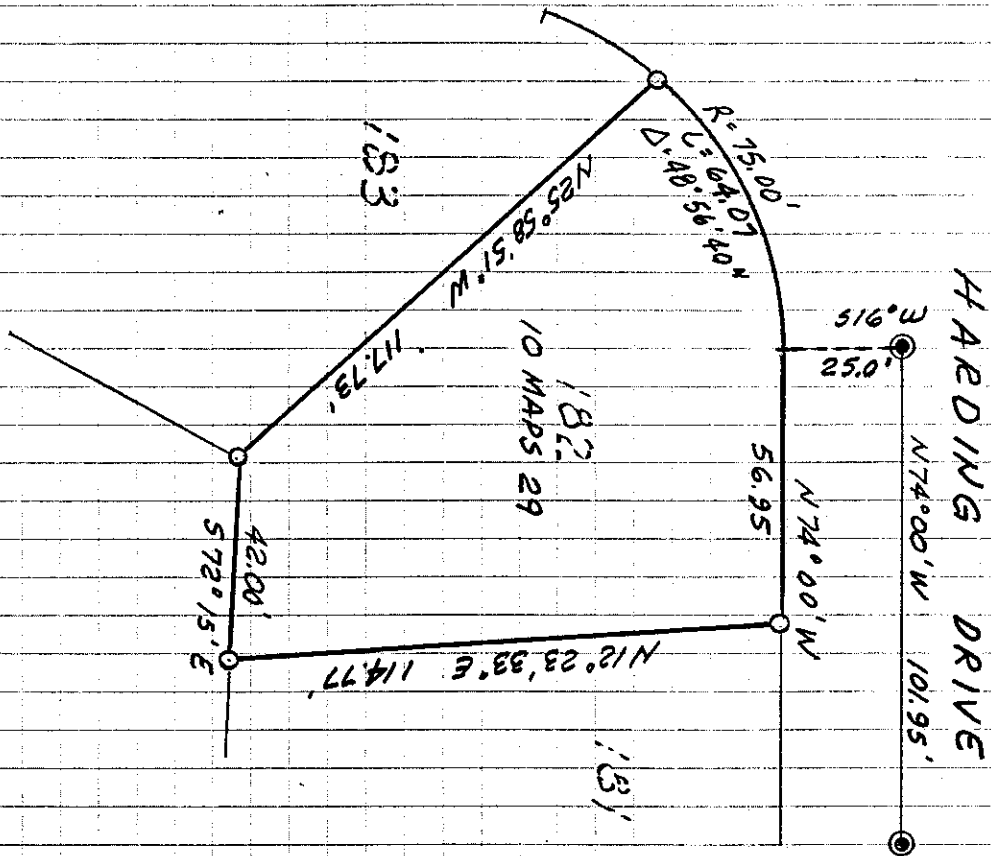
### COUNTY SURVEYOR'S STATEMENT

This Corner Record was received MAY 31 1996 and examined and filed June 3 1996.

Signed [Signature] Title CLERK



County Surveyor's Comment \_\_\_\_\_



**LEGEND**

- ⊙ FOUND STALPARED STREET MON.
- SET 3/4" IRON PIPE TAG AC#12094