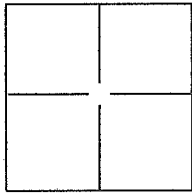


CORNER RECORD

Document Number 151-136-05
County of MARIN, California

City of NOVATO

Brief Legal Description LOT 13 - MAP OF NOVATO HILLS, BOOK 10 MAPS, PAGE 97



CORNER TYPE

Government Corner Control
Meander Property
Rancho Other

Date of Survey 04/01/15

COORDINATES(Optional)

N. _____
E. _____
Zone _____ NAD27 NAD83
NAD83 Epoch _____
Elev. _____
Vert. Datum: NGVD29 NADV88
Meas. Units: Metric Imperial

Corner - Left as found Found and tagged Established Reestablished Rebuilt

Identification and type of corner found: Evidence used to identify or procedure used to establish or reestablish the corner:

FOUND CENTERLINE MONUMENTS IN BROWN DRIVE AS SHOWN ON BOOK 10 MAPS, PAGE 97.

SEE REVERSE.

A description of the physical condition of the monument as found and as set or reset: _____

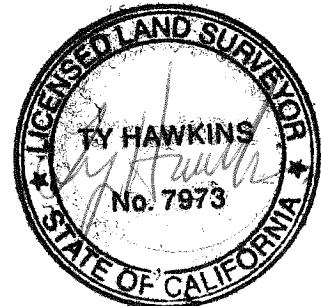
SET 3/4" X 24" IRON PIPE AND CAP LS 7973 AT THE CORNERS OF LOT 13, BOOK 10 MAPS, PAGE 97.

SEE REVERSE.

SURVEYOR'S STATEMENT

This Corner Record was prepared by me or under my direction in conformance with
the Land Surveyor's Act on APRIL 2, 2015.

Signed Ty Hawkins P.L.S. or R.C.E. No.: LS 7973



COUNTY SURVEYOR'S STATEMENT

This Corner Record was received APRIL 6, 2015 and examined
and filed MAY 4, 2015.

Signed Richard G. Simonitch P.L.S. or R.C.E. No.: 7821



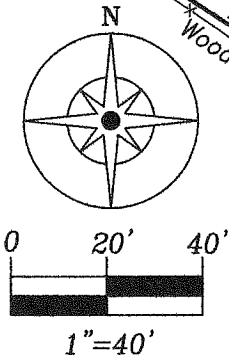
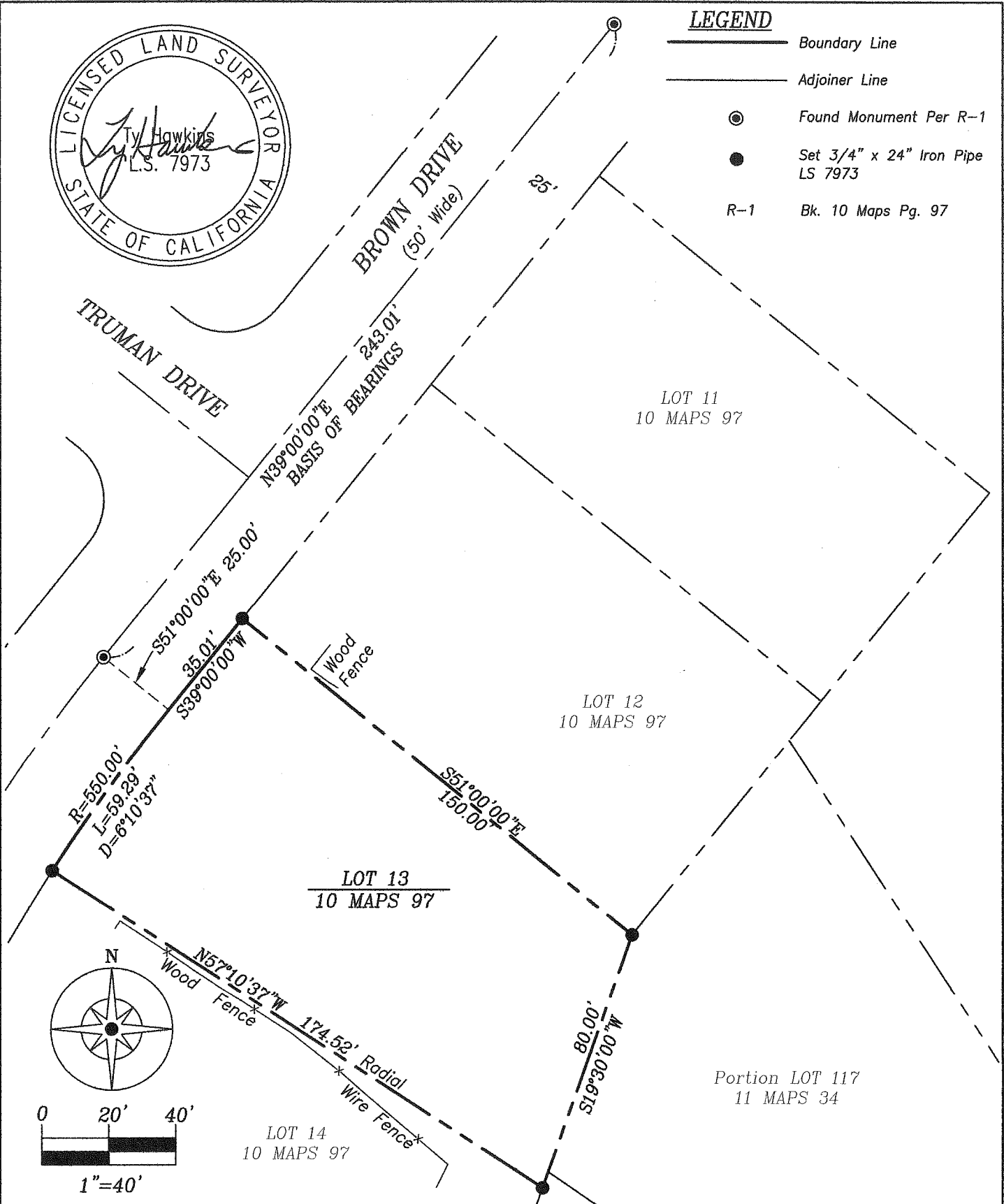
Title _____

County Surveyor's Comment _____

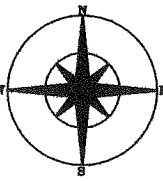


LEGEND

- Boundary Line
- Adjoiner Line
- Found Monument Per R-1
- Set 3/4" x 24" Iron Pipe LS 7973
- R-1 Bk. 10 Maps Pg. 97



Ty Hawkins LS 7973
3636 Oak Canyon Ln.
Vacaville CA. 95688
Ph. 707-974-9890
Fx. 707-447-7171



Corner Record Plat
Lot 13
Bk. 10 of Maps Pg. 97
City of Novato
Marin County California

Date: 04/02/15	Scale: 1"=40'
Job #: 15018	
	Sheet 2
	of 2
	2