

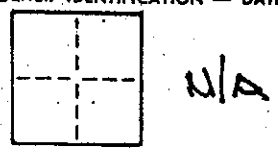
CORNER RECORD

1 of 1

COUNTY OF MARIN T. _____ R. _____ MERIDIAN _____ CALIFORNIA

CORNER TYPE: GOV'T. CORNER MEANDER RANCHO CONTROL OTHER

CORNER IDENTIFICATION - DATE OF VISIT _____ 19____



CORNER - LEFT AS FOUND FOUND AND TAGGED REESTABLISHED OBLITERATED CORNER REBUILT

PHYSICAL DESCRIPTION OF CORNER FOUND; EVIDENCE AND METHOD USED TO IDENTIFY OR REESTABLISH

N/A

PHYSICAL DESCRIPTION OF MONUMENTS REBUILT OR PERPETUATED

SET SE CORNER OF LOT 42 OF PACHECHO RANCH ESTATES UNIT 4 [20 RM 26]

CALIFORNIA COORDINATE SYSTEM ORDER: FIRST SECOND THIRD N/A

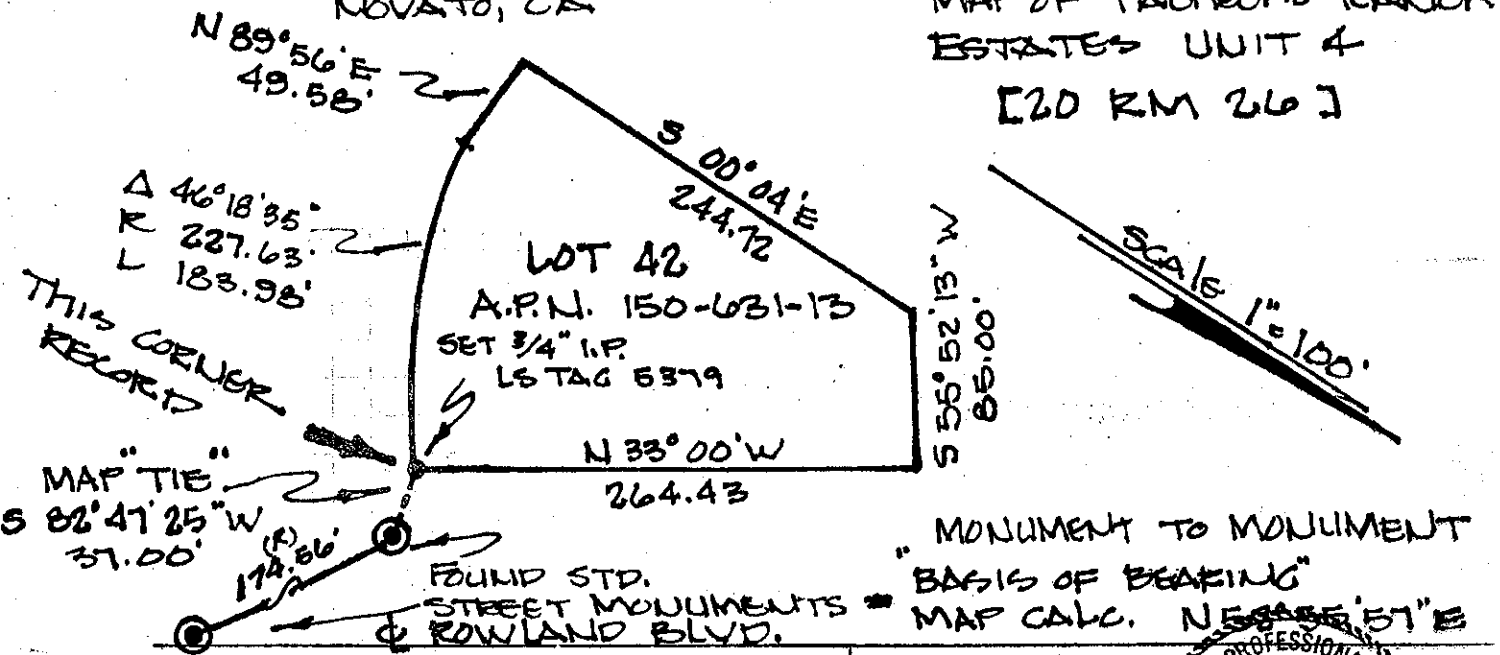
STATIONS USED: NGS (USC & GS) STATE COUNTY OTHER STATION _____ STATION _____

ZONE _____ ELEVATION _____ NORTHINGS (Y) _____ EASTINGS (X) _____

SKETCH: (Include reference tie or witness points, remarks and topo of area)

SITE LOCATION: 772 ROWLAND BLVD. NOVATO, CA

MAP OF PACHECHO RANCH ESTATES UNIT 4 [20 RM 26]



SURVEYOR'S CERTIFICATE

THIS CORNER RECORD WAS PREPARED BY ME OR UNDER MY DIRECTION IN CONFORMANCE WITH THE LAND SURVEYORS ACT ON JANUARY 26th 1990.

SIGNED: Daugho J. Sclento
 L.S. or R.C.E. No. LS 5379 EXP. 6/30/92

COUNTY SURVEYOR'S OFFICE

THE CORNER RECORD WAS REVIEWED AND EXAMINED AND FILED BY: [Signature] TITLE: [Signature]

DOCUMENT No. _____ STATEMENT ON BACK OF SHEET _____

