

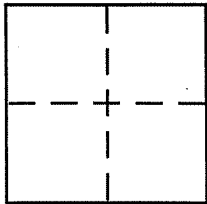
CORNER RECORD

Document Number APN 150-620-02

City of NOVATO

County of MARIN, California

Brief Legal Description LOT 49 PER 20 R.M. 26



CORNER TYPE

Government Corner Control
Meander Property
Rancho Other
Date of Survey 7-31-07

COORDINATES (Optional)

N. _____
E. _____
Zone _____ NAD27 NAD83
NAD83 Epoch _____
Elev. _____
Vert. Datum: NGVD29 NAVD88
Meas. Units: Metric Imperial

Corner - Left as found Found and tagged Established Reestablished Rebuilt

Identification and type of corner found: Evidence used to identify or procedure used to establish or reestablish the corner:

= SEE OVER =

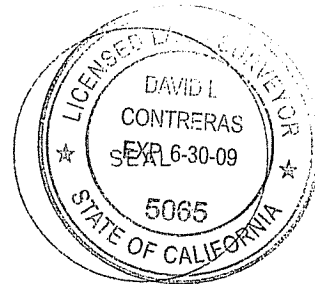
A description of the physical condition of the monument as found and as set or reset:

= SEE OVER =

SURVEYOR'S STATEMENT

This Corner Record was prepared by me or under my direction in conformance with the Land Surveyor's Act on DEC 17 2007

Signed David Contreras (P.L.S. or R.C.E. No. 5065)



COUNTY SURVEYOR'S STATEMENT

This Corner Record was received DECEMBER 20, 2008

and examined and filed JANUARY 15, 2008

Signed [Signature] P.L.S. or R.C.E. No. 7128

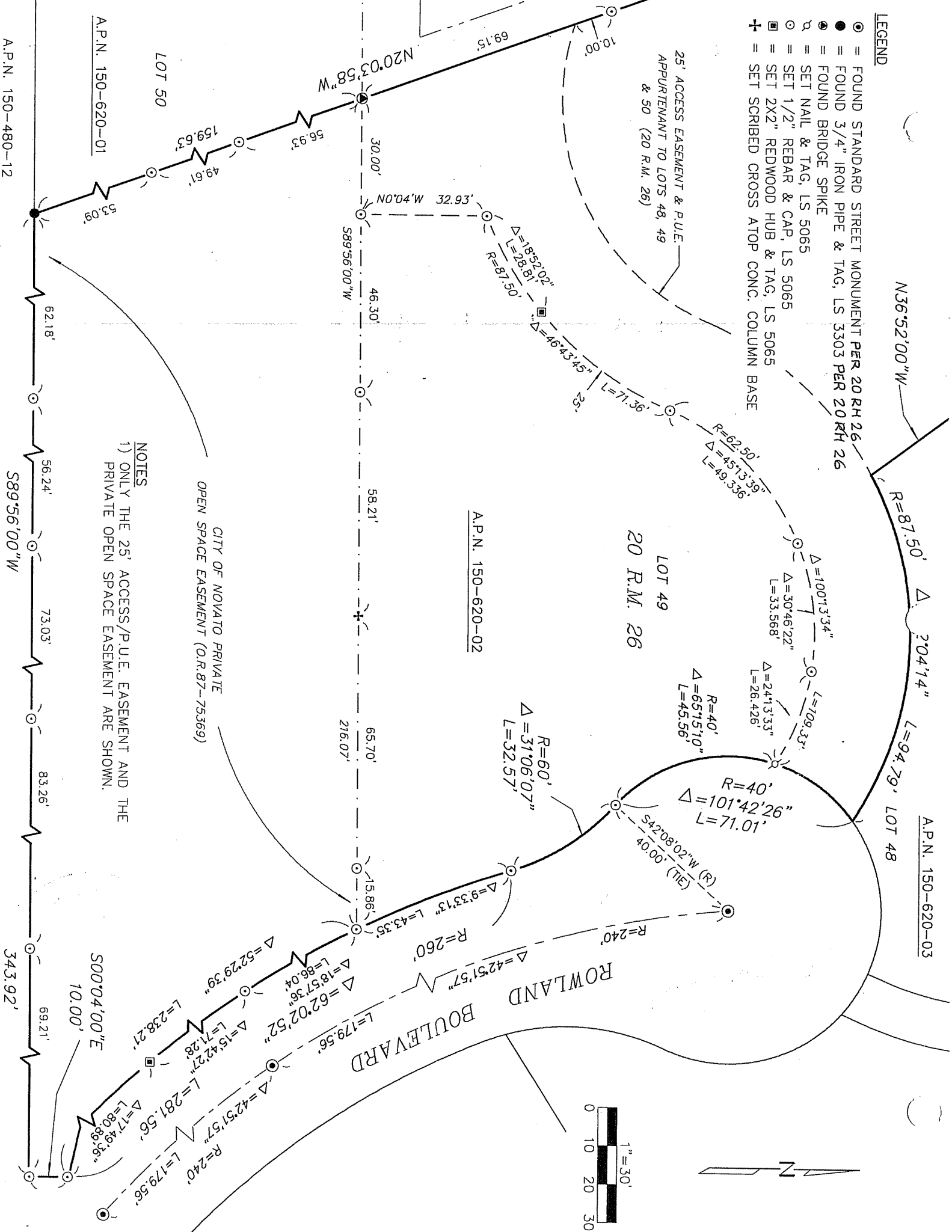
Title COUNTY SURVEYOR



County Surveyor's Comment _____

LEGEND

- = FOUND STANDARD STREET MONUMENT PER 20 R.H. 26
- = FOUND 3/4" IRON PIPE & TAG, LS 3303 PER 20 R.H. 26
- ⊙ = FOUND BRIDGE SPIKE
- ⊘ = SET NAIL & TAG, LS 5065
- ⊚ = SET 1/2" REBAR & CAP, LS 5065
- ⊛ = SET 2X2" REDWOOD HUB & TAG, LS 5065
- ⊜ = SET SCRIBED CROSS ATOP CONC. COLUMN BASE



N36°52'00"W

R=87.50'

Δ=100°13'34"

L=94.79'

A.P.N. 150-620-03

25' ACCESS EASEMENT & P.U.E. APPURTENANT TO LOTS 48, 49 & 50 (20 R.M. 26)

LOT 49
20 R.M. 26

A.P.N. 150-620-02

ROWLAND BOULEVARD

A.P.N. 150-620-01

LOT 50

A.P.N. 150-480-12

S89°56'00"W

500°04'00"E

343.92'

69.15'

10.00'

N20°03'58"W

30.00'

N0°04'W 32.93'

Δ=18°52'02"

L=28.81'

R=87.50'

Δ=46°43'45"

L=71.36'

R=62.50'

Δ=45°13'39"

L=49.336'

Δ=100°13'34"

Δ=30°46'22"

L=33.568'

Δ=24°13'33"

L=26.426'

R=40'

Δ=65°15'10"

L=45.56'

R=40'

Δ=101°42'26"

L=71.01'

S42°08'02"W (R)

40.00' (TIE)

R=240'

Δ=9°33'13"

L=43.35'

R=260'

Δ=42°51'57"

L=179.56'

Δ=62°02'52"

L=179.56'

Δ=18°57'36"

L=86.04'

Δ=52°29'39"

L=238.21'

Δ=15°42'27"

L=71.28'

Δ=42°51'57"

L=179.56'

Δ=17°49'36"

L=80.89.36'

R=240'

Δ=71°49'36"

L=80.89.36'

62.18'

56.24'

73.03'

83.26'

65.70'

216.07'

15.86'

43.35'

46.30'

58.21'

58.21'

56.93'

49.61'

159.63'

53.09'

69.21'