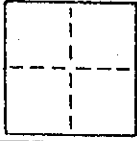


### CORNER RECORD

COUNTY OF \_\_\_\_\_ T. \_\_\_\_\_ R. \_\_\_\_\_ SEC. \_\_\_\_\_ M. D. B. & \_\_\_\_\_ MERIDIAN \_\_\_\_\_ CALIFORNIA

CORNER TYPE: GOV'T. CORNER  MEANDER  RANCHO  CONTROL  OTHER

CORNER IDENTIFICATION — DATE OF VISIT \_\_\_\_\_ 19\_\_\_\_



Lot 7, PACHECO RANCH ESTATES, UNIT 1,  
Recorded 19 Maps 54, Marin County, California.

CORNER — LEFT AS FOUND  FOUND AND TAGGED  REESTABLISHED OBLITERATED CORNER  REBUILT

PHYSICAL DESCRIPTION OF CORNER FOUND; EVIDENCE AND METHOD USED TO IDENTIFY OR REESTABLISH

Original map called for a curb slash, however owner wanted the Northwesterly corner set. I used Street Monuments to set the corner.

**AP 150-610-07**

PHYSICAL DESCRIPTION OF MONUMENTS REBUILT OR PERPETUATED

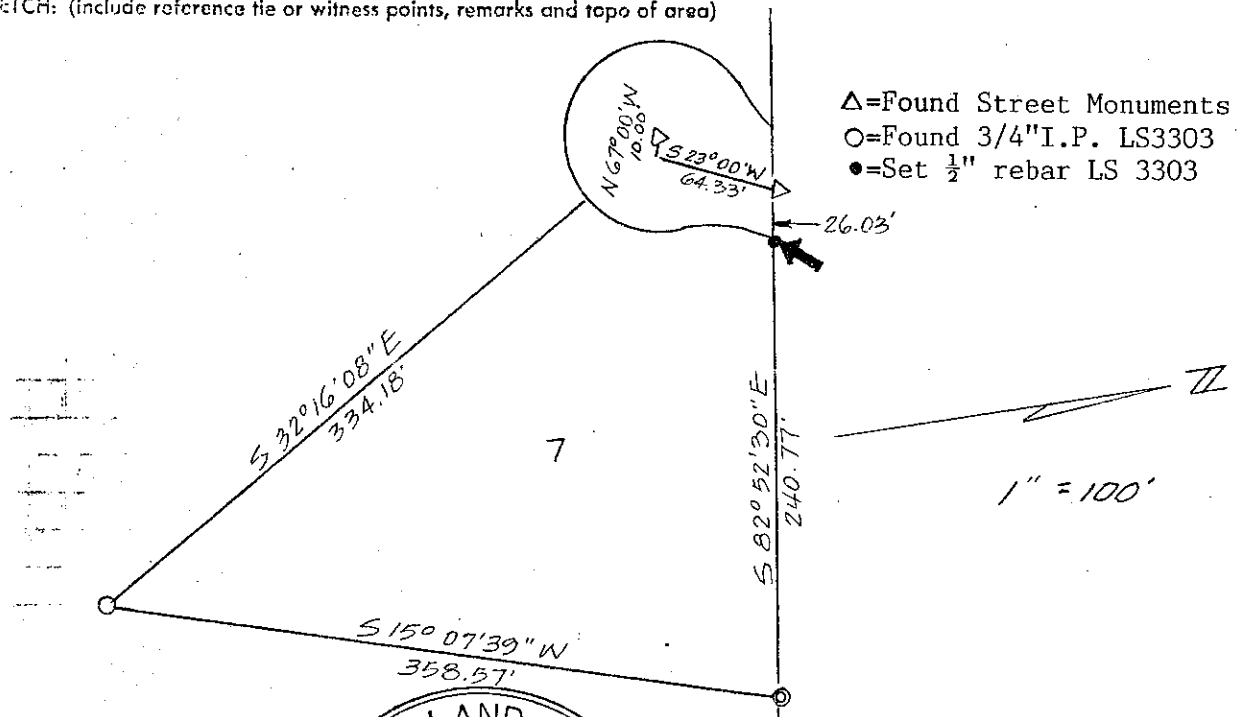
I set a 1/2 inch rebar 18" long tagged LS 3303.

CALIFORNIA COORDINATE SYSTEM ORDER: FIRST  SECOND  THIRD

STATIONS USED: NGS (USC & GS)  STATE  COUNTY  OTHER  STATION \_\_\_\_\_ STATION \_\_\_\_\_

ZONE \_\_\_\_\_ ELEVATION \_\_\_\_\_ NORTHINGS (Y) \_\_\_\_\_ EASTINGS (X) \_\_\_\_\_

SKETCH: (include reference tie or witness points, remarks and topo of area)



**SURVEYOR'S CERTIFICATE**

THIS CORNER RECORD WAS PREPARED BY ME OR UNDER MY DIRECTION IN CONFORMANCE WITH THE LAND SURVEYORS ACT ON NOVEMBER 11 1987 BY JOHN G. STUBER

SIGNED: John G. Stuber 3303

L.S. or R.C.E. No.: L.S. 3303 EXP. 6-30-88

STATE OF CALIFORNIA

**COUNTY SURVEYOR'S CERTIFICATE**

THE CORNER RECORD WAS RECEIVED 12-1 1987 AND EXAMINED AND FILED 12-2 1987 BY: RDB TITLE: Deplo SM

DOCUMENT No. 33186

STATEMENT ON BACK OF SHEET YES  NO