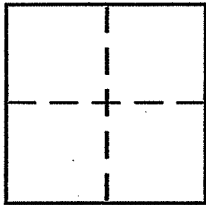


CORNER RECORD

Document Number 150.592.06
City of NOVATO County of MARIN, California

Brief Legal Description LOT 9, MAP OF INDIAN HILLS, 17 RM 91



CORNER TYPE

Government Corner Control
Meander Property
Rancho Other
Date of Survey 7/6 & 7/9 2010

COORDINATES (Optional)

N. _____
E. _____
Zone _____ NAD27 NAD83
NAD83 Epoch _____
Elev. _____
Vert. Datum: NGVD29 NAVD88
Meas. Units: Metric Imperial

Corner - Left as found Found and tagged Established Reestablished Rebuilt

Identification and type of corner found: Evidence used to identify or procedure used to establish or reestablish the corner:

REESTABLISH THE LOT LINES OF LOT 9, MAP OF INDIAN HILLS, 17 RM 91 FROM EXISTING STANDARD STREET MONUMENTS PER SAID RECORD MAP. REFER TO SKETCH ON REVERSE FOR DETAILS.

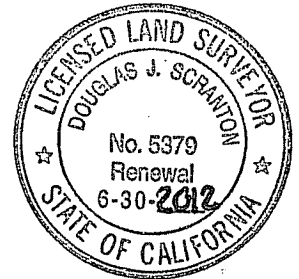
A description of the physical condition of the monument as found and as set or reset:

SET 1/2" REBAR WITH PLS CAP 5379, SCRANTON (EMBOSSED ON CAP) THAT IS AFFIXED TO TOP OF REBAR. REBAR TOP IS SET FLUSH TO SURROUNDING GRADE. SEE SKETCH ON REVERSE SIDE FOR SPECIFIC LOCATIONS.

SURVEYOR'S STATEMENT

This Corner Record was prepared by me or under my direction in conformance with the Land Surveyor's Act on July 13 2010

Signed Douglas J. Scranton P.L.S. or R.C.E. No. PLS 5379



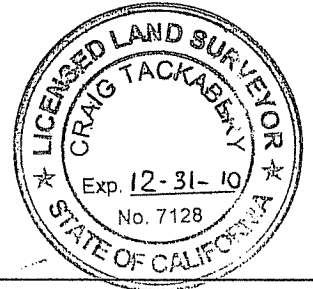
COUNTY SURVEYOR'S STATEMENT

This Corner Record was received JULY 16, 2010

and examined and filed AUGUST 16, 2010

Signed [Signature] P.L.S. or R.C.E. No. 7128

Title COUNTY SURVEYOR

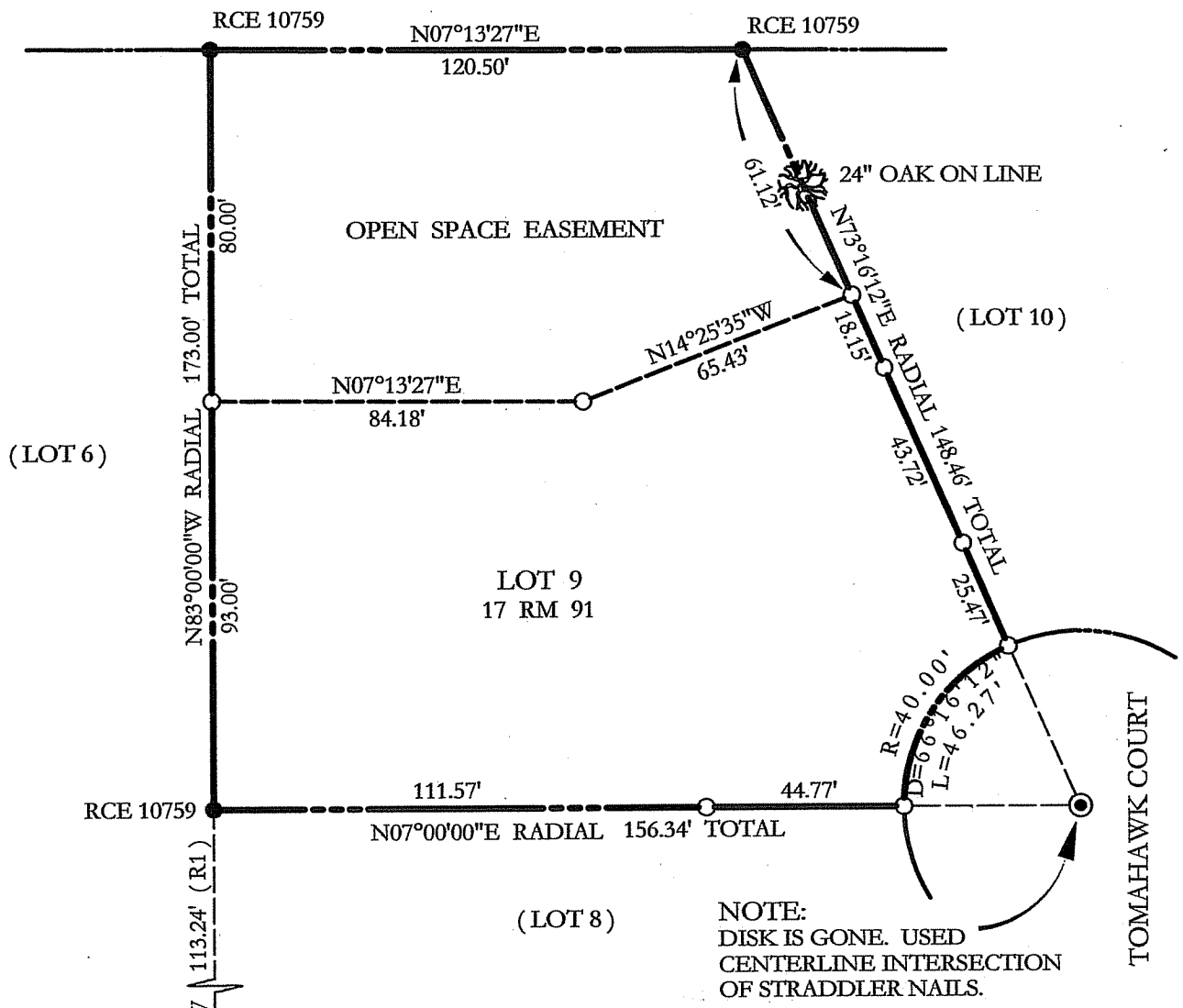


County Surveyor's Comment _____

JN 11017

PREPARED BY DJ SCRANTON SURVEYING PETALUMA, CA

SCALE: 1" = 40'



BASIS OF BEARINGS
 S07°00'00"W 103.99' MEAS
 (104.00' R1)
 INDIAN HILLS DRIVE

(LOT 8)

(LOT 10)

(LOT 6)

LOT 9
 17 RM 91

NOTE:
 DISK IS GONE. USED
 CENTERLINE INTERSECTION
 OF STRADDLER NAILS.

LEGEND

- ⊙ STANDARD STREET MONUMENT
- SET 1/2" REBAR/PLS CAP 5379
- FOUND RCE 10759 (R1)
- R1 17 RM 91

NOTE:
 NO EASEMENTS ARE SHOWN
 EXCEPT FOR THE OPEN SPACE

ALL DIMENSIONS GIVEN IN
 FEET AND DECIMALS THEREOF

BASIS OF BEARINGS

TAKEN AS SOUTH 07°00'00" WEST BETWEEN
 MONUMENTS AS SHOWN ON INDIAN HILLS DRIVE AND
 AS SAID MONUMENTS ARE DEPICTED UPON R1.