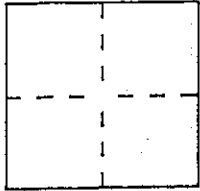


CORNER RECORD

Document Number 150-542-14

City of NOVATO County of MARIN, California

Brief Legal Description Lot 26 ~ Final MAP of WOODLAND HEIGHTS (15 RM 1)
APN 150-542-14



CORNER TYPE

Government Corner Control
Meander Property
Rancho Other
Date of Survey _____

COORDINATES
(Optional)

N. _____
E. _____
Zone _____ Datum _____
Elev. _____

Corner — Left as found Found and tagged Established Reestablished Rebuilt

Identification and type of corner found; Evidence used to identify or procedure used to establish or reestablish the corner:

Reestablish the two southerly corners of lot 26 of the Final
MAP of WOODLAND HEIGHTS, 15 RM 1, MARIN COUNTY RECORDS;
corners set from existing standard street monuments on
WOODLAND COURT as shown upon said Final MAP of WOODLAND
HEIGHTS

A description of the physical condition of the monument as found and as set or reset:

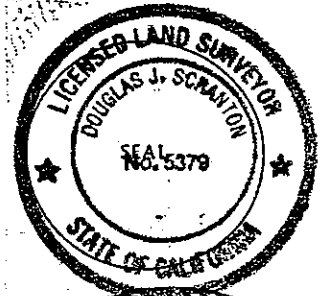
set 1/2" rebar with LS CAP 5379 Affixed to top.

SURVEYOR'S STATEMENT

This Corner Record was prepared by me or under my direction in conformance with
the Land Surveyors' Act on September 20th 19 93.

Signed Douglas J. Stanton L.S. or R.C.E. Number 5379

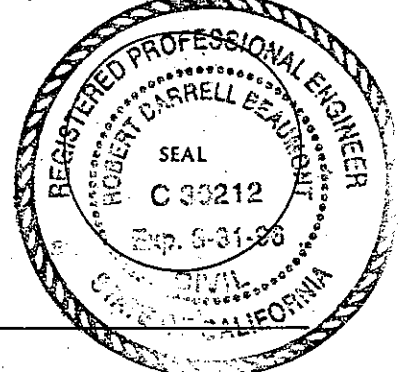
renewal 6-30-96



COUNTY SURVEYOR'S STATEMENT

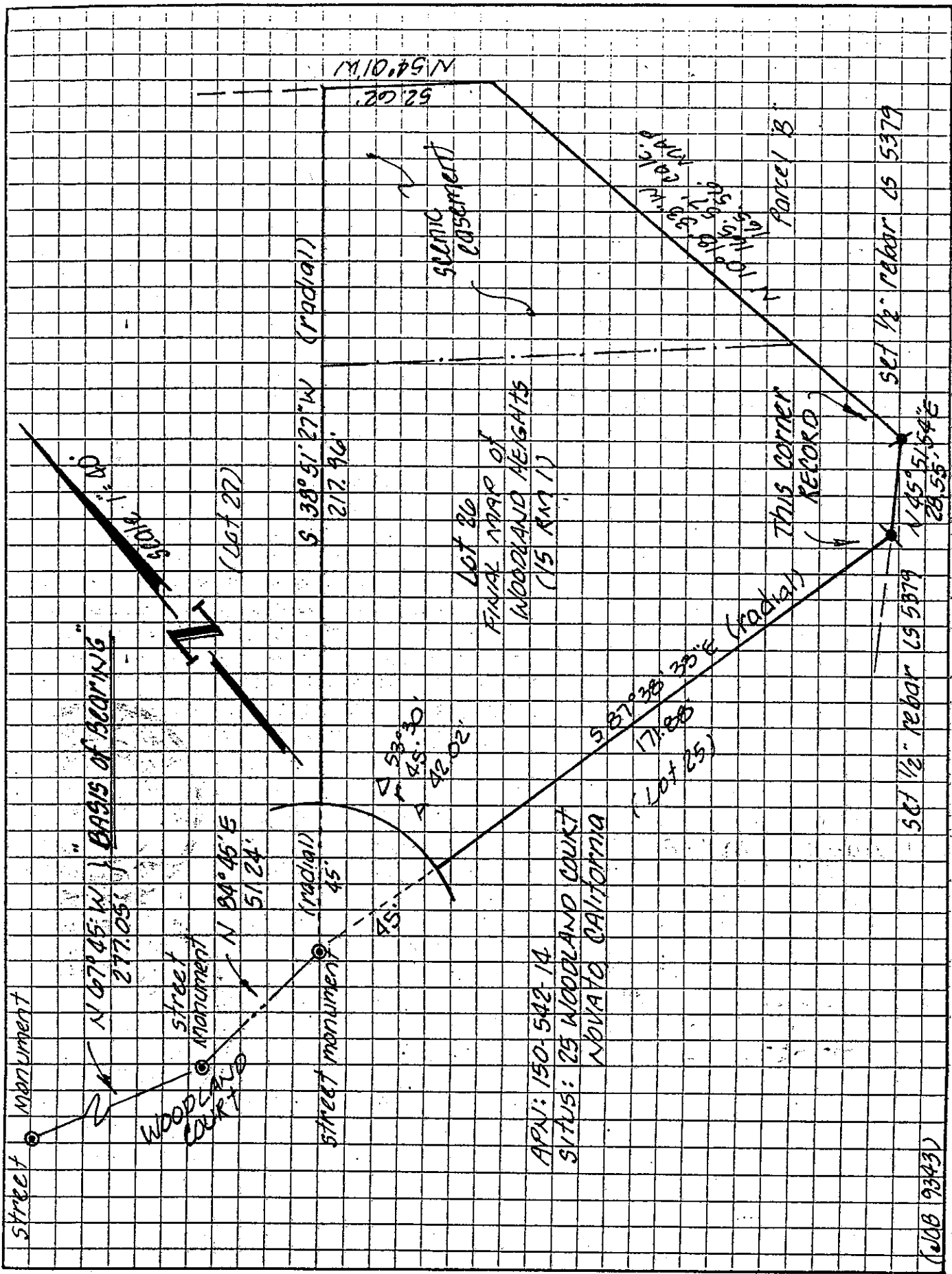
This Corner Record was received 9-24 19 93 and examined
and filed 9-24 19 93.

Signed [Signature] Title DCS



County Surveyor's Comment _____

NOVATO, CA 94945
845 OLIVE AVENUE SUITE 208
NOVATO, CA 94945
LJ SCKANION SURVEYING



APN: 150-542-1A
 SITUS: 25 WOODLAND COURT
 NOVATO CALIFORNIA

(JOB 9343)