

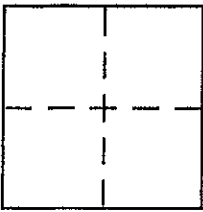
CORNER RECORD

Document Number APN. 150-542-11

City of NOVATO

County of MARIN, California

Brief Legal Description LOT 24, "WOODLAND HEIGHT", NOVATO 15 RMI MCR



CORNER TYPE

Government Corner Control
Meander Property
Rancho Other
Date of Survey 9/5/02

COORDINATES (Optional)

N. _____
E. _____
Zone _____ NAD27 NAD83
NAD83 Epoch _____
Elev. _____
Vert. Datum: NGVD29 NAVD88
Meas. Units: Metric Imperial

Corner - Left as found Found and tagged Established Reestablished Rebuilt

Identification and type of corner found: Evidence used to identify or procedure used to establish or reestablish the corner:
FOUND SUBDIVISION RECORD STREET MONUMENTS IN RECORD POSITIONS AND USED CALCULATED LOCATION OF LOT 24 PROPERTY CORNERS AND LINE POINTS AS SHOWN HEREON.

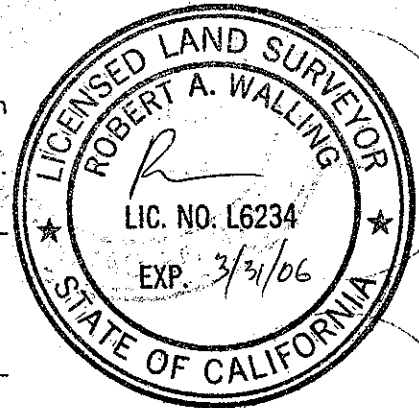
A description of the physical condition of the monument as found and as set or reset:

STREET MONUMENTS FOUND UNDISTURBED.

SURVEYOR'S STATEMENT

This Corner Record was prepared by me or under my direction in conformance with the Land Surveyor's Act on SEPTEMBER 20 2002

Signed [Signature] P.L.S or R.C.E. No. PLS 6234



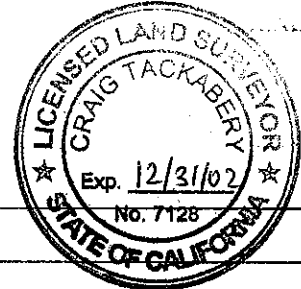
COUNTY SURVEYOR'S STATEMENT

This Corner Record was received SEPTEMBER 23, 2002

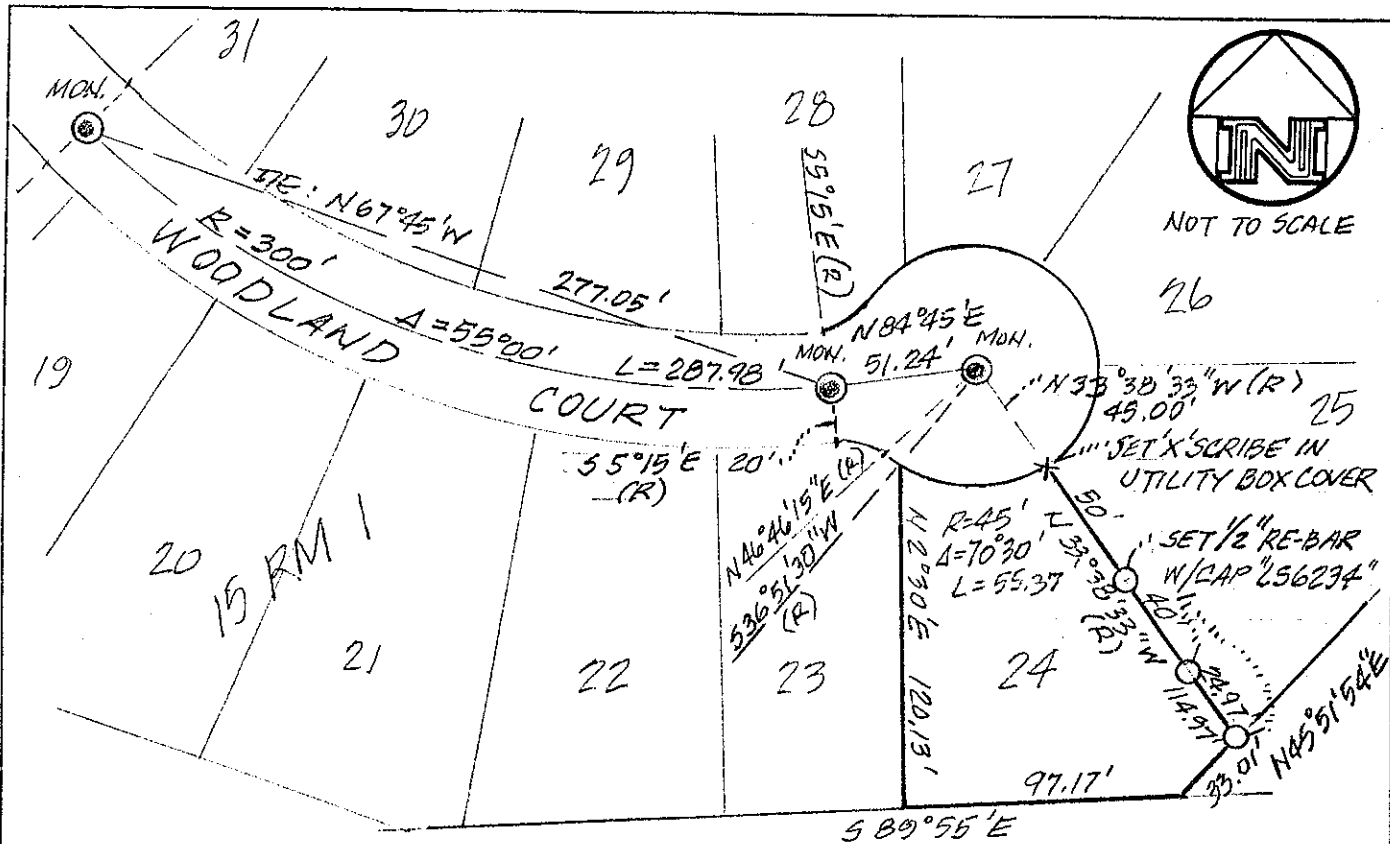
and examined and filed SEPTEMBER 25, 2002

Signed [Signature] P.L.S or R.C.E. No. 7128

Title DEPUTY

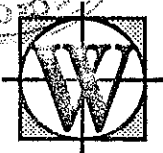
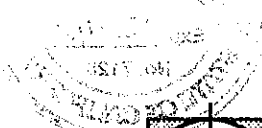


County Surveyor's Comment _____



SURVEY PLAT
 LANDS OF SOUDER
 LOT 24, "WOODLAND HEIGHTS"
 15 RM 1

NOVATO, MARIN COUNTY, CALIFORNIA
 APN. 150-542-11



BOB WALLING TECHNICAL SERVICES
 P.O. Box 1346 • Glen Ellen, CA 95442
 (707) 938-1593 (415) 382-1593

9/20/02

JN.102-21