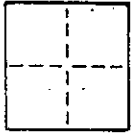


CORNER RECORD

COUNTY OF MARIN T. _____ R. _____ MERIDIAN CALIFORNIA
 CORNER TYPE: GOVT. CORNER MEANDER RANCHO CONTROL OTHER
 CORNER IDENTIFICATION — DATE OF VISIT _____ 19____



CORNER — LEFT AS FOUND FOUND AND TAGGED REESTABLISHED OBLITERATED CORNER REBUILT
 PHYSICAL DESCRIPTION OF CORNER FOUND; EVIDENCE AND METHOD USED TO IDENTIFY OR REESTABLISH

A.P.N. 150-522-10

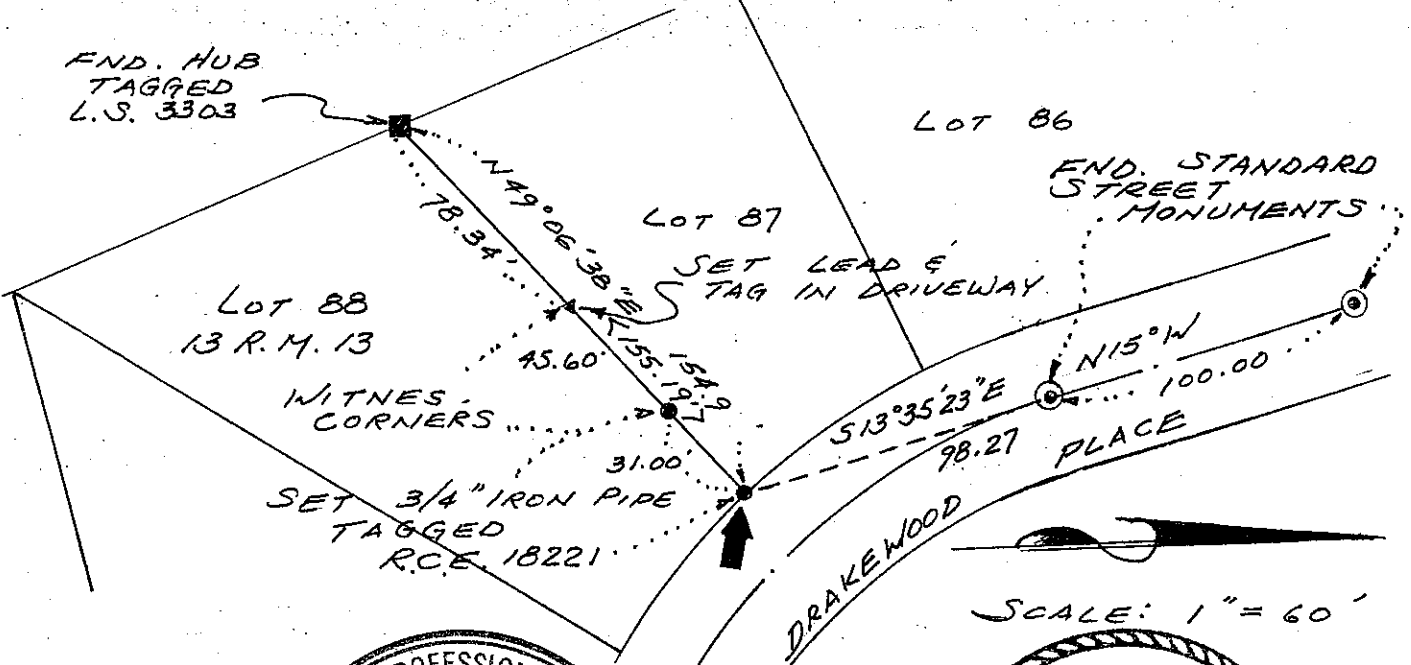
NOVATO

PHYSICAL DESCRIPTION OF MONUMENTS REBUILT OR PERPETUATED

SET 3/4" IRON PIPE W/ TAG R.C.E. 18221 FOR THE NORTHERLY CORNER OF LOT 88, 13 R.M. 13, MARIN COUNTY RECORDS. ALSO, ESTABLISHED WITNESS CORNERS ALONG PROPERTY LINE AS ILLUSTRATED. MONUMENTS WERE SET ON JULY 21, 1992.

CALIFORNIA COORDINATE SYSTEM ORDER: FIRST SECOND THIRD
 STATIONS USED: NGS (USC & GS) STATE COUNTY OTHER STATION _____ STATION _____
 ZONE _____ ELEVATION _____ NORTHINGS (Y) _____ EASTINGS (X) _____

SKETCH: (Include reference tie or witness points, remarks and topo of area)



SURVEYORS CERTIFICATE
 THIS CORNER RECORD WAS PREPARED BY ME IN THE DIRECTION IN CONFORMANCE WITH THE LAND SURVEY ACT ON JULY 21 1992
 SIGNED: [Signature] No. 18221
 L.S. or R.C.E. No. Exp. 8-31-93
 SEAL
 CIVIL ENGINEER
 STATE OF CALIFORNIA

COUNTY SURVEYORS CERTIFICATE
 THE CORNER RECORD WAS REESTABLISHED AND EXAMINED AND FOUND TO BE CORRECT BY [Signature] No. 02
 TITLE: REQUIREMENT
 DOCUMENT No. C 30212
 STATEMENT ON BASIS OF SHEET EXP. 8-31-93
 CIVIL ENGINEER
 STATE OF CALIFORNIA