

CORNER RECORD

Document Number

150-522-09

City of Novato

County of Marin

, California

Brief Legal Description

Lot 87, Kaden Park, Unit No. 2, Volume 13 of Maps, Page 13

CORNER TYPE

**COORDINATES
(Optional)**

| | |
|--|--|
| | |
| | |

Government Corner Control
 Meander Property
 Rancho Other
 Date of Survey November 23, 2004

North _____
 East _____
 Zone _____ Datum _____
 Elev. _____

Corner _____ Left as found Found and tagged Established Reestablished Rebuilt

Identification and type of corner found: Evidence used to identify or procedure used to establish or reestablish the corner:

Found 3/4" Iron Pipe with unidentifiable tag number which fit well with calculated position at Northwest Corner, also found curb cuts at property lines extensions that fit well with calculated positions. Set 3/4" Iron Pipe tagged L.S. 6330 at Southwest corner and Northerly angle point of Lot 87

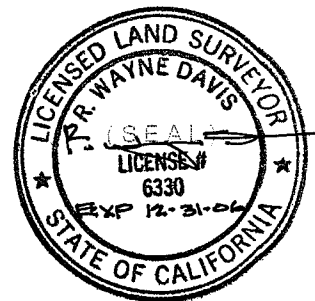
A description of the physical condition of the monument as found and as set or reset:

Set 3/4" Iron Pipe with plastic tag, L.S. 6330

SURVEYOR'S STATEMENT

This Corner Record was prepared by me or under my direction in conformance with the Land Surveyors' Act on February 3, 2005

Signed [Signature] L.S. or R.C.E. Number L.S. 6330



COUNTY SURVEYOR'S STATEMENT

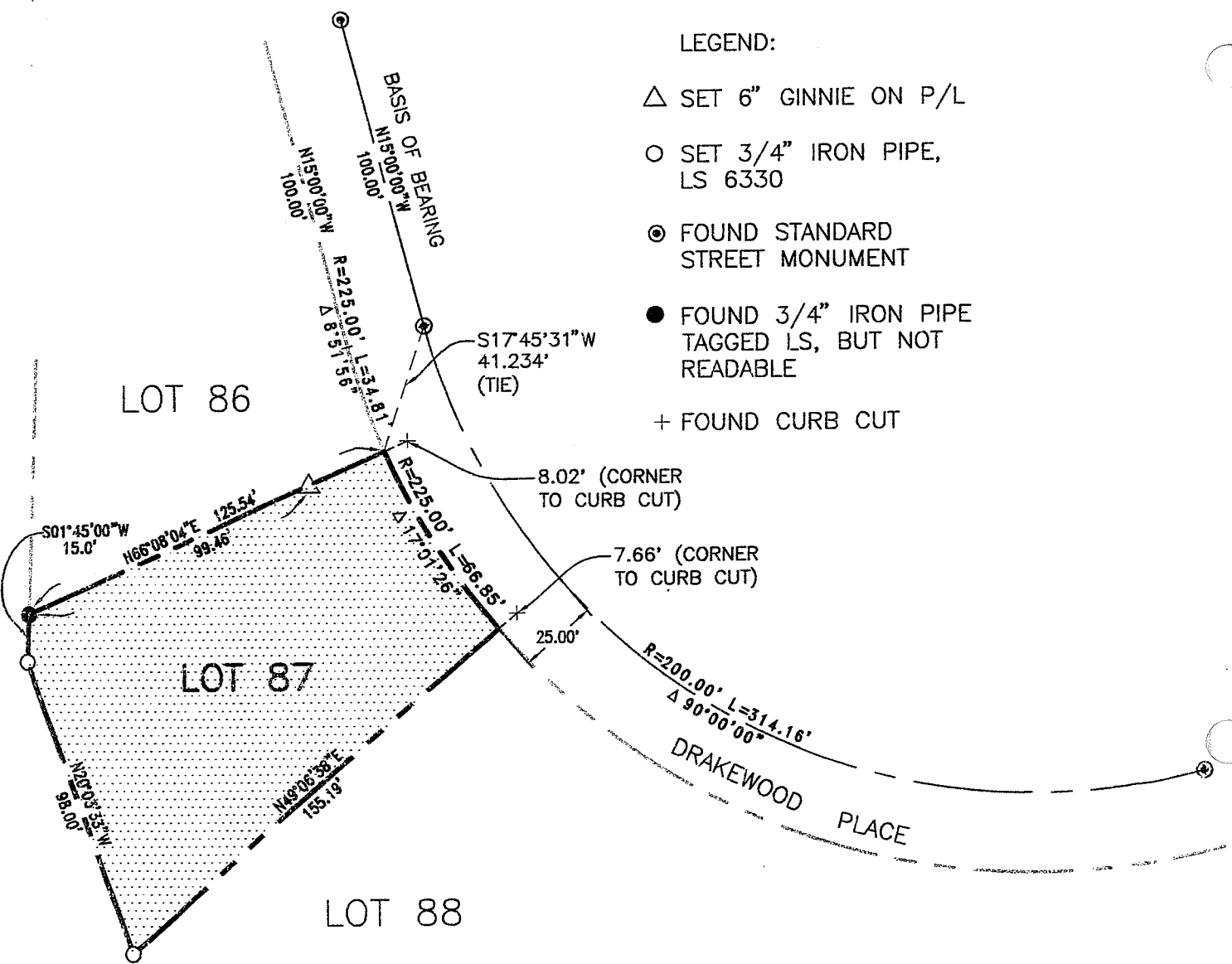
This Corner Record was received FEBRUARY 10, 2005

and examined and filed APRIL 1, 2005

Signed [Signature] Title COUNTY SURVEYOR



County Surveyor's Comment _____



LEGEND:

- △ SET 6" GINNIE ON P/L
- SET 3/4" IRON PIPE, LS 6330
- ⊙ FOUND STANDARD STREET MONUMENT
- FOUND 3/4" IRON PIPE TAGGED LS, BUT NOT READABLE
- + FOUND CURB CUT



Graphic Scale (in feet)



1 inch = 50 ft.



R.W. DAVIS & ASSOCIATES
LAND SURVEYORS

790 DeLong Ave.
 Suite 2
 Novato CA 94945
 L.S. 6330
 © 2001

Tel. (415) 898-9099
 Fax (415) 898-2499
 Email:
 RWD@CSWST2.COM

REV. 03-28-05

01-30-05

SCALE: 1" = 50'

LOT 87- KADEN PARK UNIT 2
VOLUME 13 OF MAPS, PAGE 13

NOVATO

MARIN

CALIFORNIA

JOB#237-010

A