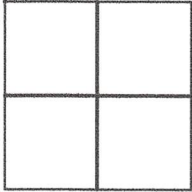


CORNER RECORD

Agency Index DPW #19-146
 Document Number APN 150-464-06
 County of MARIN, California

City of NOVATO

Brief Legal Description LOT 114, Kaden Park Unit No. 3, Book 13 of Maps Page 14



CORNER TYPE

Government Corner Control
 Meander Property
 Rancho Other

Date of Survey 12/05/2019

COORDINATES (Optional)

N. _____ E. _____
 Elevation _____
 Units Metric U.S. Survey Foot
 Horizontal Datum _____
 Zone _____ Epoch Date _____
 Vertical Datum _____
 Complies with Public Resources Code §§8801-8819
 Complies with Public Resources Code §§8890-8902

PLS Act Ref: 8765(d) 8771 8773 Other:
 Corner/Monument: Left as found Established Rebuilt Pre-Construction
 Found and tagged Reestablished Referenced Post-Construction

Narrative of corner identified and monument as found, set, reset, replaced, or removed:
 See sheet #2 for description (s):

SURVEYOR'S STATEMENT

This Corner Record was prepared by me or under my direction in conformance with the Professional Land Surveyors' Act on 12/11/2019

Signed [Signature] P.L.S. or R.C.E. No. 6649



COUNTY SURVEYOR'S STATEMENT

This Corner Record was received DECEMBER 16, 2019

and examined and filed JAN. 30, 2020

Signed [Signature] P.L.S. or R.C.E. No. 9292

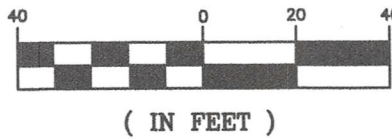
Title DEPUTY C.S.



County Surveyor's Comment _____

All distances shown are in feet and decimals thereof

GRAPHIC SCALE



LEGEND

- Found Street Monument 2" Brass Disc with Tag Illegible in Standard Monument Casing Per () 1
- Set Mag Nail & 1-1/2" Diameter Brass Washer, Stamped "LA STEVENS PLS 6649"
- Set 5/8" Rebar & Punched 1-1/2" Diameter Aluminum Cap, Stamped "LA STEVENS PLS 6649"

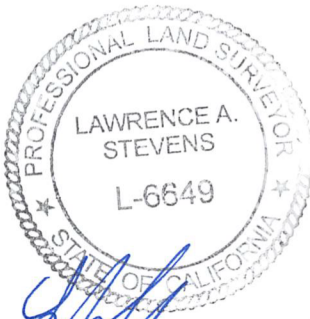
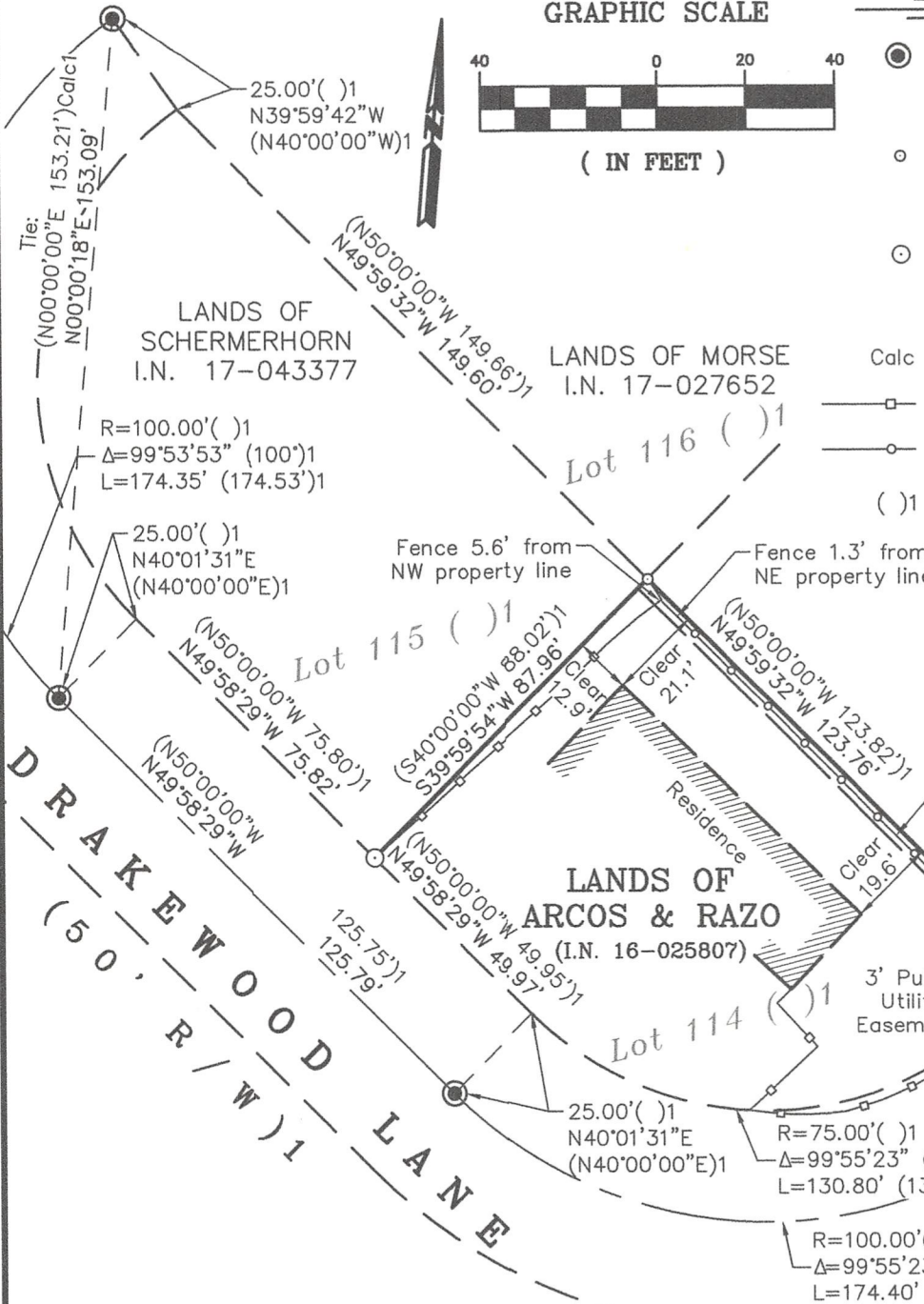
Calc Calculated per Record Map

—□— Wood Fence

—○— Wire Fence

() 1 13 RM 14, "Kaden Park Unit No. 3", by Harold R. Orr, 4/23/1965

LANDS OF NICKERSON & BEAUDETTE I.N. 13-065547



12-11-19

Corner Record Lands of Arcos & Razo

(Lot 114, 13 RM 14) Novato Marin County California Scale: 1" = 40' December, 2019

L.A. Stevens & Associates, Inc. Professional Land Surveyors * (415) 382-7713 7 Commercial Blvd., Suite 1 * Novato, CA 94949

Job # 191991

Lawrence A. Stevens, PLS 6649

Copyright © Lawrence A. Stevens 2019