

CORNER RECORD

Assessor's Parcel No. 150-452-14

City of Novato County of Marin California

Brief Legal Description: Lot 14, 12 RM 22 Marin County Records

CORNER TYPE

COORDINATES
(Optional)

Lot in Existing Subdivision

None

Corners - None Found. Set the two rear corners based on monuments shown on 12 RM 22.

Description of Monuments reset: See the map.

SURVEYOR'S STATEMENT

This Corner Record was prepared by me or under my direction in conformance with the Land Surveyor's Act on December 29, 2014.

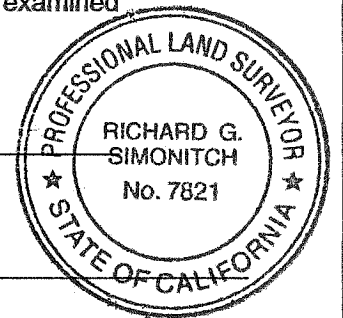


Signed Dale White LS 4397

COUNTY SURVEYOR'S STATEMENT

This Corner Record was received DECEMBER 30, 20 14, and examined and filed MARCH 13, 20 15.

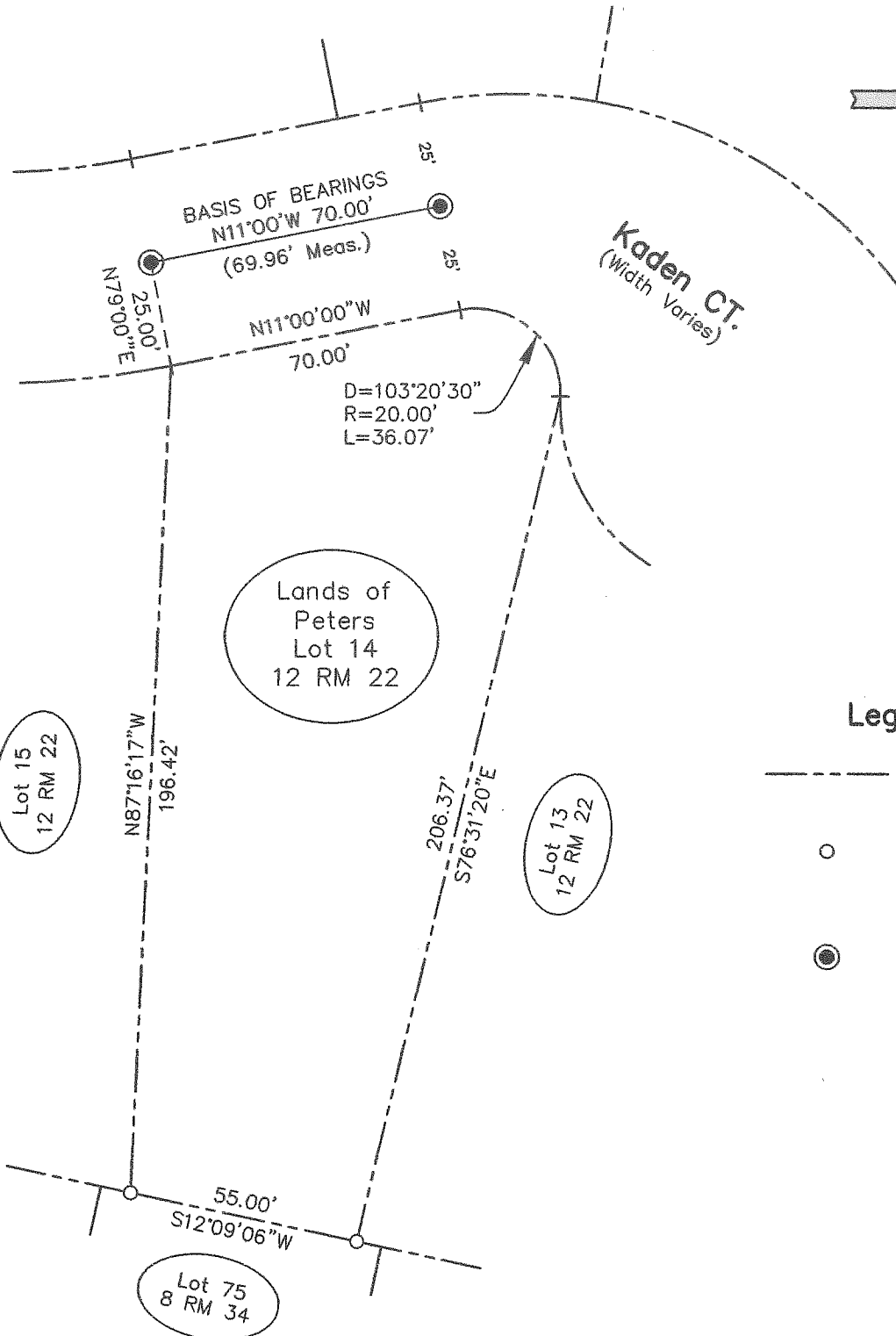
Signed Richard G. Simonitch Title Deputy



County Surveyor's Comments _____



Scale: 1" = 40'



Legend

- Property Line
- Set 3/4" I. P. And Tag LS 4397 Unless Otherwise Noted
- Found Street Monument Per 12 RM 22

WHITE & PRESCOTT
 Engineering and Surveying
 1620 Grant Ave
 Novato, CA 94945

Corner Record
 Lot 14, 12 RM 22
 Marin County Records
 Page 2 of 2

10 Kaden Court
 Novato, CA
 APN 150-452-14