

CORNER RECORD

Assessor's Parcel No. 150-452-09

City of Novato County of Marin California

Brief Legal Description: Lot 9, 12 RM 22 Marin County Records

CORNER TYPE

COORDINATES
(Optional)

Lot in Existing Subdivision

None

Corners - None Found. Reestablished corners based on monuments shown on 12 RM 22.
Did not set the southwesterly corner as directed by the owner.

Description of Monuments reset: See the map.

SURVEYOR'S STATEMENT

This Corner Record was prepared by me or under my direction in conformance with the Land Surveyor's Act on March 25, 2013.

Signed Dale White LS 4397



*Dale White
3-26-13*

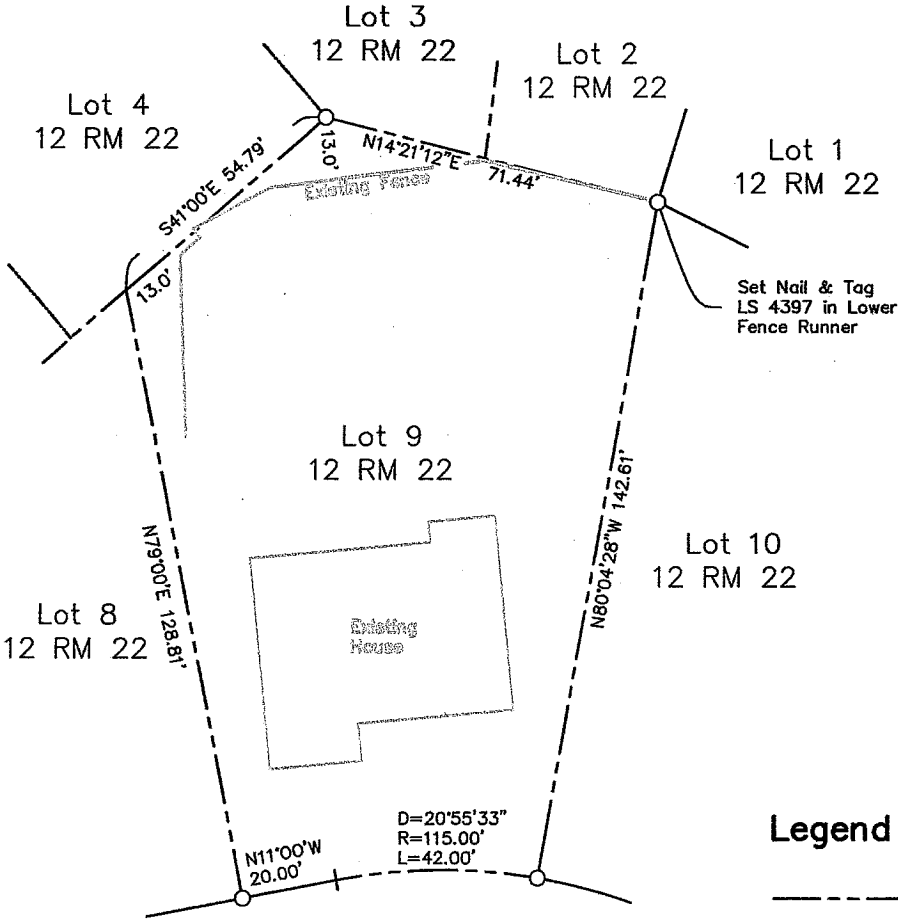
COUNTY SURVEYOR'S STATEMENT

This Corner Record was received MARCH 29, 20 13, and examined
and filed MAY 7 2013, 20 _____.

Signed Richard G. Simonitch Title DEPUTY COUNTY SURVEYOR



County Surveyor's Comments _____



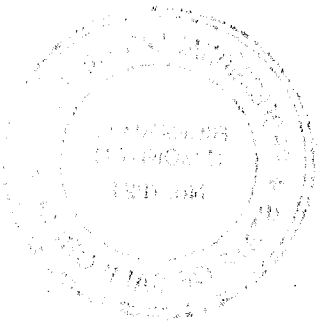
Scale: 1" = 40'

Legend

- Property Line
- Existing Fence
- Set 3/4" Iron Pipe And Tag LS 4397 Unless Otherwise Noted
- Found Street Monument Per 12 RM 22

BASIS OF BEARINGS
N11°00'W 70.00'
(69.96' Meas.)

Kaden CT.
(Width Varies)



Corner Record
Lot 9, 12 RM 22
Marin County Records
Page 2 of 2

11 Kaden Court
Novato, CA
APN 150-452-09

WHITE & PRESCOTT
Engineering and Surveying
1620 Grant Ave
Novato, CA 94945