

CORNER RECORD

Agency Index CR23-018

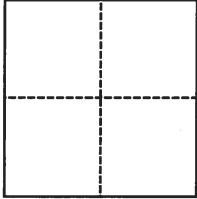
Document Number 150-441-05

City of Novato County of Marin, California

Brief Legal Description Lot 22 "Forest Park Unit Eight" Record Maps Book 12 Page 26

CORNER TYPE

COORDINATES (Optional)



- Government Corner
- Meander
- Rancho
- Control
- Property
- Other

N. _____ E. _____

Elevation _____

Units Metric U.S. Survey Foot

Horizontal Datum _____

Zone _____ Epoch Date _____

Vertical Datum _____

Complies with Public Resources Code §§8801-8819

Complies with Public Resources Code §§8890-8902

PLS Act Ref.: 8765(d) 8771 8773 Other:

Corner/Monument: Left as found Established Rebuilt Pre-Construction

Found and tagged Reestablished Referenced Post-Construction

Narrative of corner identified and monument as found, set, reset, replaced, or removed:

See sheet #2 for description(s):

SURVEYOR'S STATEMENT

This Corner Record was prepared by me or under my direction in conformance with
 the Professional Land Surveyors' Act on MARCH 31, 2023
 Signed *Leon E. Oberkammer* P.L.S. or R.C.E. No. RCE12094

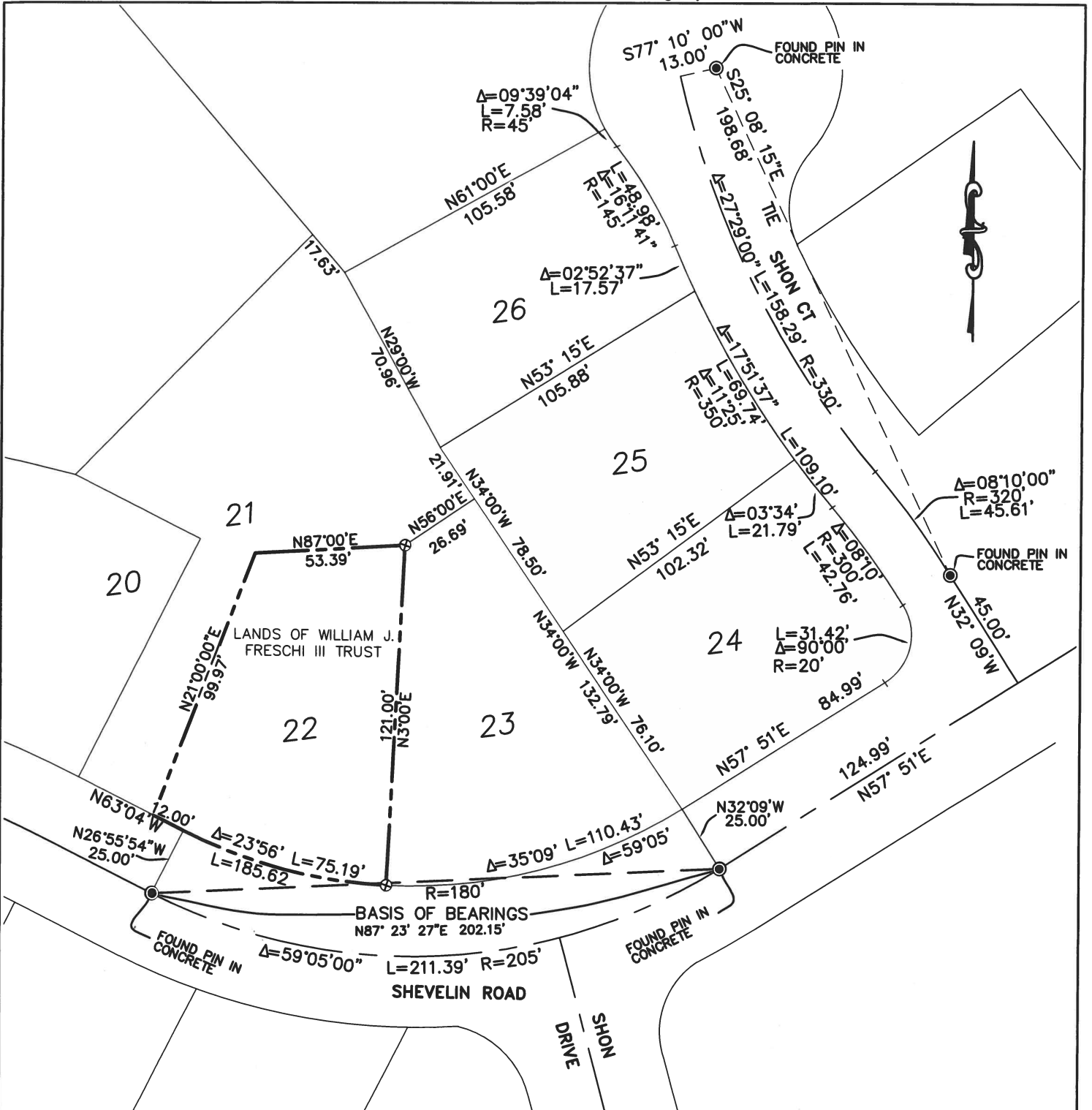


COUNTY SURVEYOR'S STATEMENT

This Corner Record was received March 31, 2023
 and examined and filed April 05, 2023
 Signed *T.W. Park* P.L.S. No. 8176
 Title County Surveyor



County Surveyor's Comment



LEGEND

- FOUND STANDARD STREET MONUMENT
- ⊗ SET 3/4" IRON PIPE AND CAP (RCE 12094)

- — — — — PROPERTY BOUNDARY
- — — — — BASIS OF BEARING
- — — — — STREET CENTERLINE

BASIS OF BEARING

THE BASIS OF BEARING OF THIS SURVEY IS
 N87°23'27"E BETWEEN FOUND MONUMENTS
 PER 12 RM 26.

CORNER RECORD

LANDS OF WILLIAM J. FRESCHI III TRUST
 (DN: 2019-0022059 APN: 150-441-05)
 LOT 22 "FOREST PARK UNIT EIGHT"
 RECORD MAP VOLUME 12 PAGE 26
 CITY OF NOVATO MARIN COUNTY CALIFORNIA

OBERKAMPER & ASSOCIATES
CIVIL ENGINEERS INC.
 7200 REDWOOD BLVD SUITE 308
 NOVATO CA 94945
 (415)897-2800

SCALE: 1"=50'