

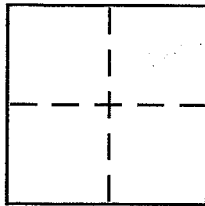
**CORNER RECORD**

Document Number 150-241-15

City of NOVATO

County of \_\_\_\_\_, California

Brief Legal Description LOT 30, FOREST PARK, Unit B, 12 MAPS 26



**CORNER TYPE**

Government Corner  Control   
 Meander  Property   
 Rancho  Other   
 Date of Survey JUNE 27, 2005

**COORDINATES (Optional)**

N. \_\_\_\_\_  
 E. \_\_\_\_\_  
 Zone \_\_\_\_\_ NAD27  NAD83   
 NAD83 Epoch \_\_\_\_\_  
 Elev. \_\_\_\_\_  
 Vert. Datum: NGVD29  NAVD88   
 Meas. Units: Metric  Imperial

Corner -- Left as found  Found and tagged  Established  Reestablished  Rebuilt

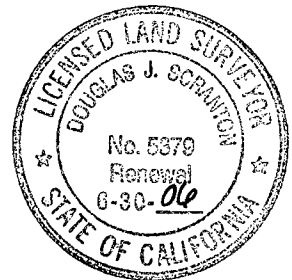
Identification and type of corner found: Evidence used to identify or procedure used to establish or reestablish the corner:

REESTABLISH THE LOT LINE COMMON TO LOT 30 & LOT 31 (THE REAR LINE OF LOT 31) OF THE MAP OF FOREST PARK, Unit B, 12 MAPS 26. ESTABLISHED LINE FROM EXISTING CUL DE SAC RADIAL MONUMENT ON SHON COURT PER 12 MAPS 26 & BEARING BASIS FROM MONUMENTS ON SHEVELIN ROAD PER SAME SAID MAP.

A description of the physical condition of the monument as found and as set or reset: see sketch on reverse side for details. Unless noted otherwise set 1/2" rebar with PLS CAP 5379 AFFIXED TO TOP OF REBAR & DRIVEN FLUSH WITH SURROUNDING GRADE. REBARS SET AT RANDOM INTERVALS ALONG COMMON LOT LINE.

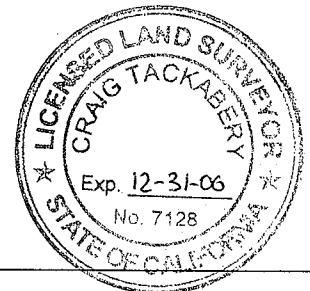
**SURVEYOR'S STATEMENT**

This Corner Record was prepared by me or under my direction in conformance with the Land Surveyor's Act on June 28<sup>th</sup> 2005  
 Signed [Signature] P.L.S or R.C.E. No. PLS 5379



**COUNTY SURVEYOR'S STATEMENT**

This Corner Record was received JULY 1, 2005  
 and examined and filed AUGUST 9, 2005  
 Signed [Signature] P.L.S or R.C.E. No. 7128  
 Title COUNTY SURVEYOR

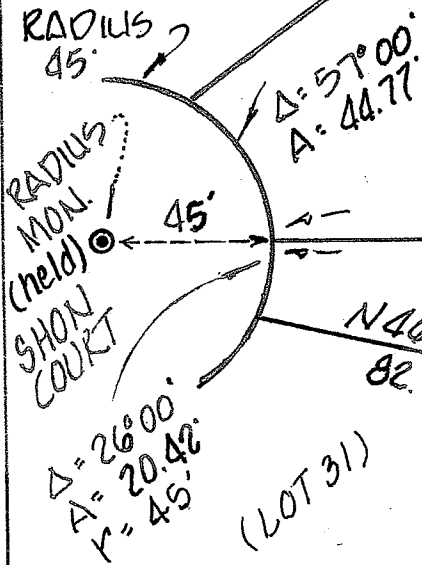
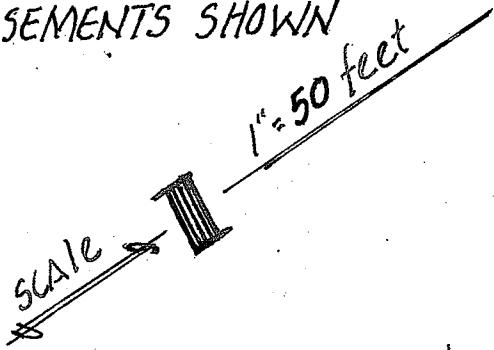


County Surveyor's Comment \_\_\_\_\_

Prepared by D.J. SCRANTON SURVEYING NOVATO, CALIFORNIA

ALL DISTANCES GIVEN IN FEET & DECIMALS THEREOF  
 NO EASEMENTS SHOWN

EXISTING 1/2" rebar  
 LS 5379 PER  
 PREVIOUS CORNER  
 BY THIS OFFICE  
 (TYPICAL)



(LOT 28)  
 (LOT 29)  
 LOT 29  
 (12 MAPS 26)

248.66'  
 N 34° 00' E (RADIAL)

131.50' 117.16'

N 46° 30' E  
 82.90'

set GMA  
 concrete nail  
 in asphalt

LOT 30  
 (12 MAPS 26)

(DISTANCE TOTAL)  
 FOR LOT 30

236.07' overall total

MAP OF  
 FOREST PARK  
 UNIT

N 47° 09' W  
 30.66'  
 32.93'  
 42.01'  
 116.59'  
 (LOT TOTAL)

181.10'  
 34.57'  
 79.70'

○ = set 1/2" rebar  
 PLS CAP 5379  
 AFFIXED TO TOP

S 45° 15' W  
 64.21'  
 10.99'

N 39° 25' E  
 150.84'

FALLS @  
 EXISTING  
 FENCE CORNER

BASIS OF BEARING TAKEN AS  
 N 57° 51' 00" E BETWEEN MONUMENTS  
 OF RECORD ON SHEVELIN ROAD  
 (OPPOSITE LOTS 30 & 41 ~ 374.99' MON TO MON)