

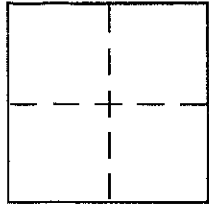
**CORNER RECORD**

Document Number 150-241-15 & 25

City of NOVATO

County of MARIN, California

Brief Legal Description LOT 29 & LOT 30 FOREST PARK UNIT B 12 MAPS 26



**CORNER TYPE**

Government Corner  Control   
Meander  Property   
Rancho  Other   
Date of Survey 10/09/2001

**COORDINATES (Optional)**

N. \_\_\_\_\_  
E. \_\_\_\_\_  
Zone \_\_\_\_\_ NAD27  NAD83   
NAD83 Epoch \_\_\_\_\_  
Elev. \_\_\_\_\_  
Vert. Datum: NGVD29  NAVD88   
Meas. Units: Metric  Imperial

Corner - Left as found  Found and tagged  Established  Reestablished  Rebuilt

Identification and type of corner found: Evidence used to identify or procedure used to establish or reestablish the corner:

REESTABLISH THE LOT LINE COMMON TO LOT 29 & LOT 30  
OF THE MAP OF FOREST PARK UNIT B, 12 MAPS 26 & ALSO  
REESTABLISH THE REAR LOT LINES OF BOTH REFERRED LOTS.  
LINES ESTABLISHED FROM EXISTING STREET MONUMENTS  
OF RECORD. SEE SKETCH ON REVERSE SIDE.

A description of the physical condition of the monument as found and as set or reset:

SET 1/2" REBAR WITH PLS CAP 5379 AFFIXED TO TOP & DRIVEN  
FLUSH WITH SURROUNDING GROUND GRADE. ALSO SET  
MISCELLANEOUS LINE POINTS AS OUTLINED ON SKETCH ON  
REVERSE SIDE.

**SURVEYOR'S STATEMENT**

This Corner Record was prepared by me or under my direction in conformance with

the Land Surveyor's Act on October 12<sup>th</sup> 2001

Signed Douglas J. Scranton P.L.S. or R.C.E. No. PLS 5379  
RENEWAL 6.30.01



**COUNTY SURVEYOR'S STATEMENT**

This Corner Record was received OCTOBER 19, 2001

and examined and filed OCTOBER 24, 2001

Signed \_\_\_\_\_ P.L.S. or R.C.E. No. 7128

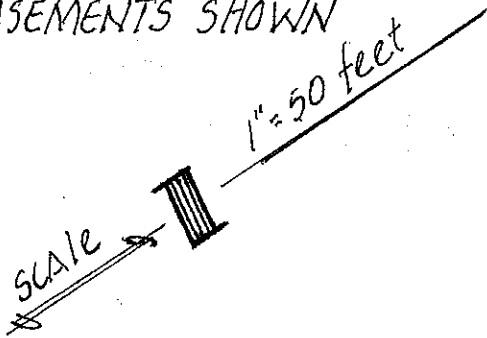
Title DEPUTY



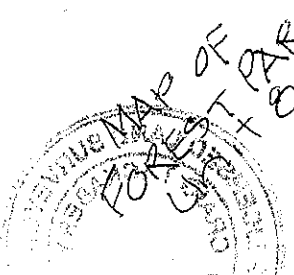
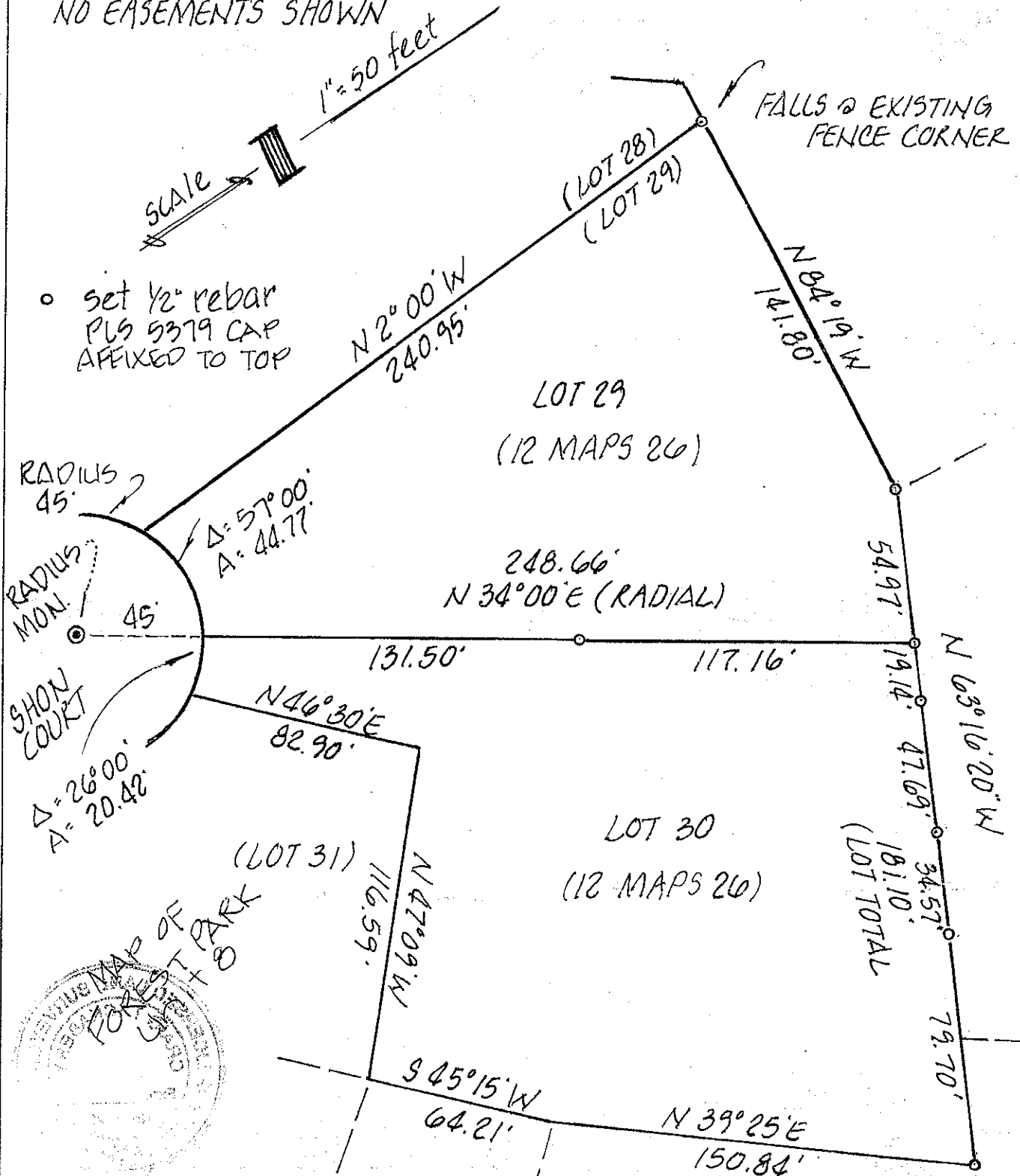
County Surveyor's Comment \_\_\_\_\_

BY: 845 OLIVE AVE. NOVATO, CALIF.  
PREPARED  
DJ SCRANTON SURVEYING

ALL DISTANCES GIVEN IN FEET & DECIMALS THEREOF  
 NO EASEMENTS SHOWN



- set 1/2" rebar  
 PLS 5379 CAP  
 AFFIXED TO TOP



BASIS OF BEARING TAKEN AS  
 N 57° 51' 00" E BETWEEN MONUMENTS  
 OF RECORD ON SHEVELIN ROAD  
 (OPPOSITE LOTS 30 & 41 ~ 374.99' MON TO MON)