

L. A. Stevens & Associates, Inc.
Professional Land Surveyors
Novato, California

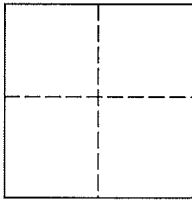
Lands of Colyer
Job #: 12-1428

CORNER RECORD

Document Number 150-241-01

Town of Novato, County of Marin, California

Brief Legal Description: Being a portion of the southerly line of Lot 188 of the Map of Forest Park Unit 6, filed in Book 10 of Maps at Page 96, Marin County Records



CORNER TYPE

COORDINATES (Optional)

Government Corner Control
Meander Property
Rancho Other

N _____
E _____
Zorro _____ NAD27 NAD83
NAD 83 Epoch _____
Elev. _____
Vert. Datum: NGVD29 NAVD88
Meas. Units: Metric Imperial

Date of Survey November 27, 2012

Corner - Left as found Found and tagged Established Reestablished Rebuilt

Identification and type of corner found: Evidence used to identify or procedure used to establish or reestablish the corner:
See Page 2 of 2

A description of the physical condition of the monument as found and as set or reset:
See Page 2 of 2

SURVEYOR'S STATEMENT

This Corner Record was prepared by me or under my direction in conformance with
The Land Surveyor's Act on December 26, 2012

Signed [Signature] P.L.S 6649

COUNTY SURVEYOR'S STATEMENT

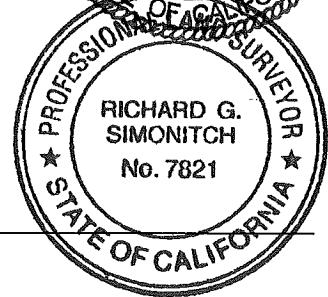
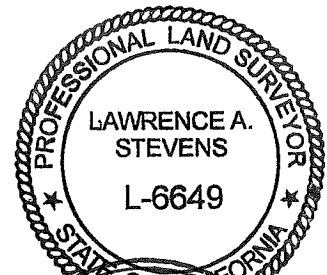
This Corner Record was received MARCH 4, 2013

and examined and filed AUGUST 8, 2013

Signed [Signature] P.L.S. or R.C.E. No. 7821

Title DEPUTY CO. SURVEYOR

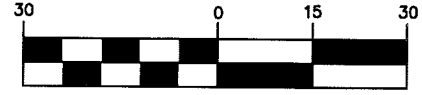
County Surveyors' Comment _____



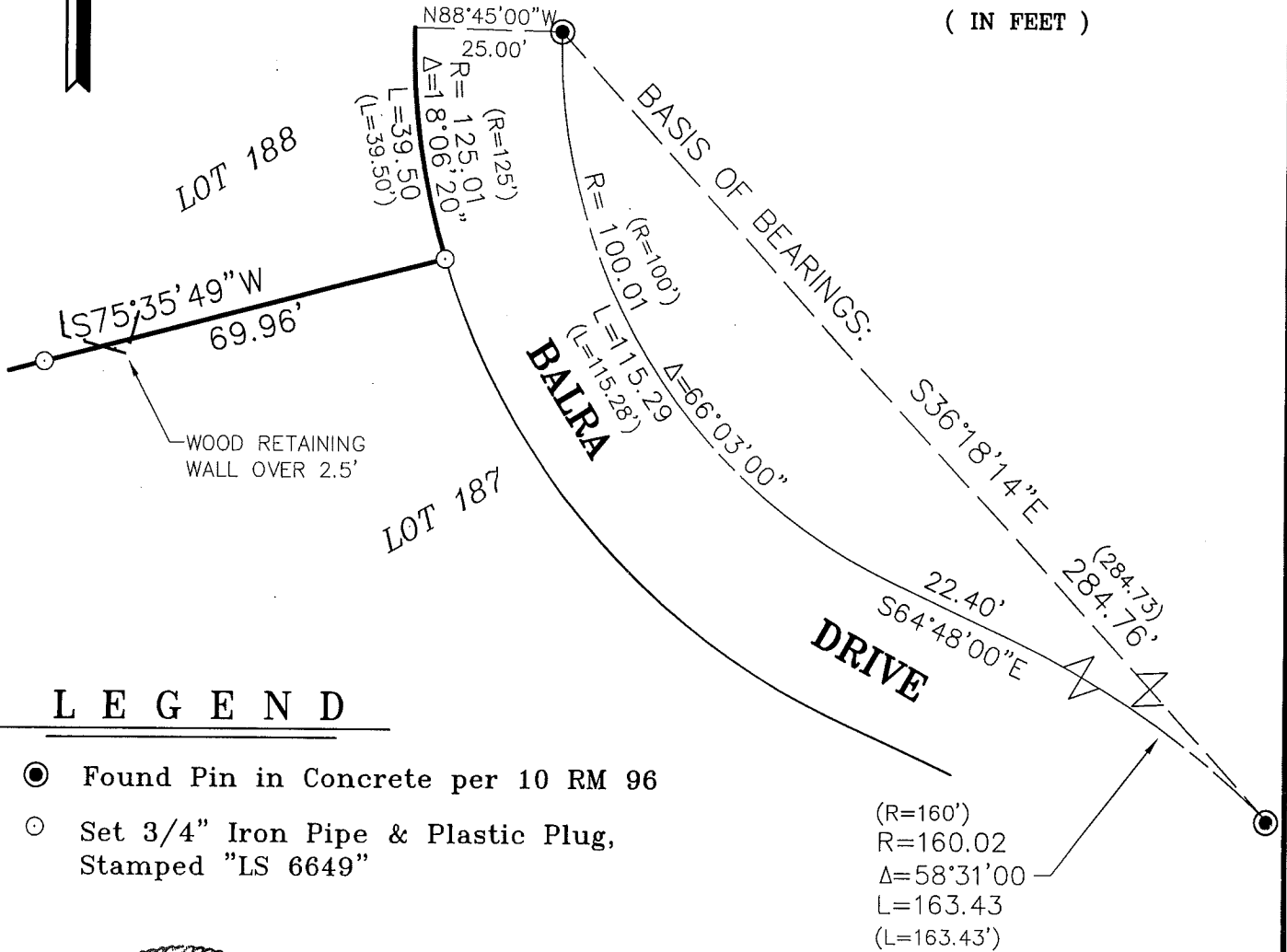
All distances shown are in feet and decimals thereof



GRAPHIC SCALE



(IN FEET)



LEGEND

- Found Pin in Concrete per 10 RM 96
- Set 3/4" Iron Pipe & Plastic Plug, Stamped "LS 6649"



12-24-12

Corner Record Lands of Colyer

(Lot 188, 10 RM 96)

Novato Marin County California
Scale: 1" = 30' December 2012

L.A. Stevens & Associates, Inc.

Professional Land Surveyors * (415) 382-7713
7 Commercial Blvd., Suite 1 * Novato, CA 94949

Lawrence A. Stevens, PLS 6649