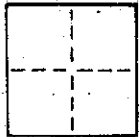


# CORNER RECORD

COUNTY OF Marin T. \_\_\_\_\_ R. \_\_\_\_\_ MERIDIAN \_\_\_\_\_ CALIFORNIA  
 CORNER TYPE: GOVT. CORNER  MEANDER  RANCHO  CONTROL  OTHER  A.P. 150-131-14  
 CORNER IDENTIFICATION — DATE OF VISIT October 9 1984



CORNER — LEFT AS FOUND  FOUND AND TAGGED  REESTABLISHED OBLITERATED CORNER  REBUILT

PHYSICAL DESCRIPTION OF CORNER FOUND; EVIDENCE AND METHOD USED TO IDENTIFY OR REESTABLISH

Set 3/4" iron pipe and tag, R.C.E. 33218, at the corners of Lot 199 as shown on that Record Map, Forest Park Unit 7, filed in Book 10 of Record Maps at Page 111, Marin County Records.

PHYSICAL DESCRIPTION OF MONUMENTS: REBUILT OR PERPETUATED

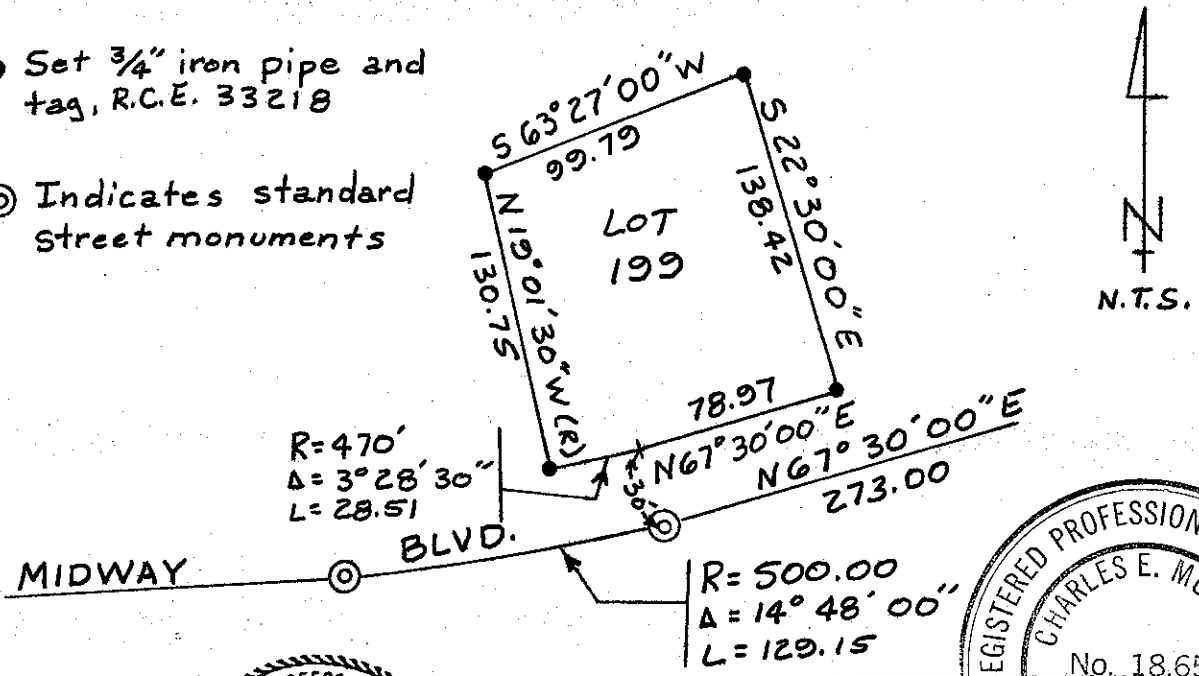
As shown hereon

CALIFORNIA COORDINATE SYSTEM ORDER: FIRST  SECOND  THIRD   
 STATIONS USED: NGS (USC & GS)  STATE  COUNTY  OTHER  STATION \_\_\_\_\_ STATION \_\_\_\_\_  
 ZONE \_\_\_\_\_ ELEVATION \_\_\_\_\_ NORTHINGS (Y) \_\_\_\_\_ EASTINGS (X) \_\_\_\_\_

SKETCH: (Include reference tie or witness points, remarks and topo of area)

• Set 3/4" iron pipe and tag, R.C.E. 33218

⊙ Indicates standard street monuments



PROFESSIONAL SURVEYOR'S CERTIFICATE  
 THIS CORNER RECORD WAS PREPARED BY ME OR UNDER MY DIRECTION IN CONFORMANCE WITH THE LAND SURVEYORS ACT ON October 9 1984  
 No. 33218  
 SIGNED: Paul J. [Signature]  
 L.S. or R.C.E. No. 153218  
 STATE OF CALIFORNIA  
 SEAL

REGISTERED PROFESSIONAL ENGINEER  
 CHARLES E. MURPHY  
 No. 18,652  
 COUNTY SURVEYOR'S CERTIFICATE  
 THE CORNER RECORD WAS RECEIVED Oct 11 1984  
 AND EXAMINED AND FILED Oct 17 1984  
 BY: C. E. [Signature]  
 TITLE: Deputy COUNTY SURVEYOR  
 DOCUMENT No. \_\_\_\_\_  
 STATEMENT ON BACK OF SHEET YES  NO