

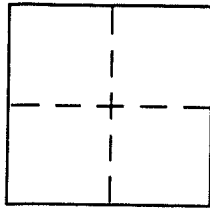
CORNER RECORD

Document Number A.P.N. 146-460-09

City of NOUATO

County of _____, California

Brief Legal Description LOT 9 PER 19 RM 18



CORNER TYPE

Government Corner Control
Meander Property
Rancho Other
Date of Survey 1-27-05

COORDINATES (Optional)

N. _____
E. _____
Zone _____ NAD27 NAD83
NAD83 Epoch _____
Elev. _____
Vert. Datum: NGVD29 NAVD88
Meas. Units: Metric Imperial

Corner - Left as found Found and tagged Established Reestablished Rebuilt

Identification and type of corner found: Evidence used to identify or procedure used to establish or reestablish the corner:

= SEE OVER =

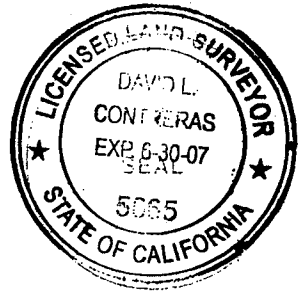
A description of the physical condition of the monument as found and as set or reset:

= SEE OVER =

SURVEYOR'S STATEMENT

This Corner Record was prepared by me or under my direction in conformance with the Land Surveyor's Act on FEBRUARY 21 2005

Signed David Contreras P.L.S or R.C.E. No. 5065



COUNTY SURVEYOR'S STATEMENT

This Corner Record was received FEBRUARY 22, 2005

and examined and filed APRIL 6, 2005

Signed _____ P.L.S or R.C.E. No. 7128

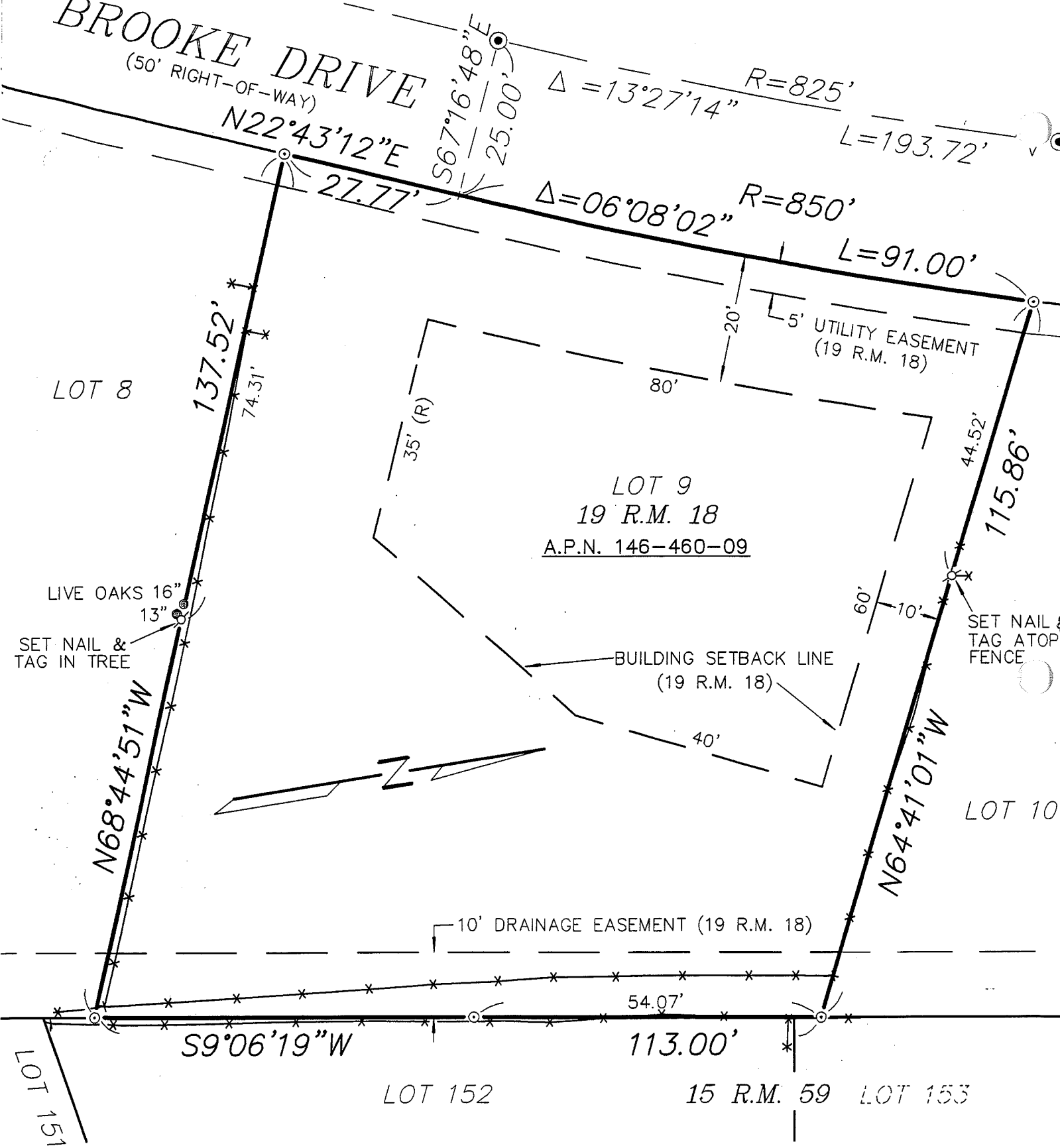
Title COUNTY SURVEYOR



County Surveyor's Comment _____

BROOKE DRIVE

(50' RIGHT-OF-WAY)



LEGEND

- (R) = RADIAL
- ⊙ = FOUND STANDARD STREET MONUMENT
- ⊙ = SET 1/2" REBAR & PLASTIC CAP, L.S.5065
- ⊙ = SET NAIL AND BRASS TAG, L.S.5065
- *—* = FENCE

SCALE : 1" = 20'

