

CORNER RECORD

Assessor's Parcel No. 146-412-01

City of Novato County of Marin California

Brief Legal Description: Lot 15, 14 RM 68 Marin County Records

CORNER TYPE

COORDINATES
(Optional)

Lot in Existing Subdivision

None

Corners - Two found. Re-established remaining corners based on monuments shown on 14 Maps 68. Set, found or referenced five property corner monuments as shown on this Corner Record.

Description of Monuments reset: Monuments set are 3/4 inch iron pipes and tags LS 4397.

SURVEYOR'S STATEMENT

This Corner Record was prepared by me or under my direction in conformance with the Land Surveyor's Act on June 13, 2013.



Signed Dale White LS 4397

COUNTY SURVEYOR'S STATEMENT

This Corner Record was received JUNE 17, 20 13, and examined and filed JULY 24, 2013, 20 _____.

Signed Richard G. Simonitch Title DEPUTY CO. SURVEYOR



County Surveyor's Comments _____

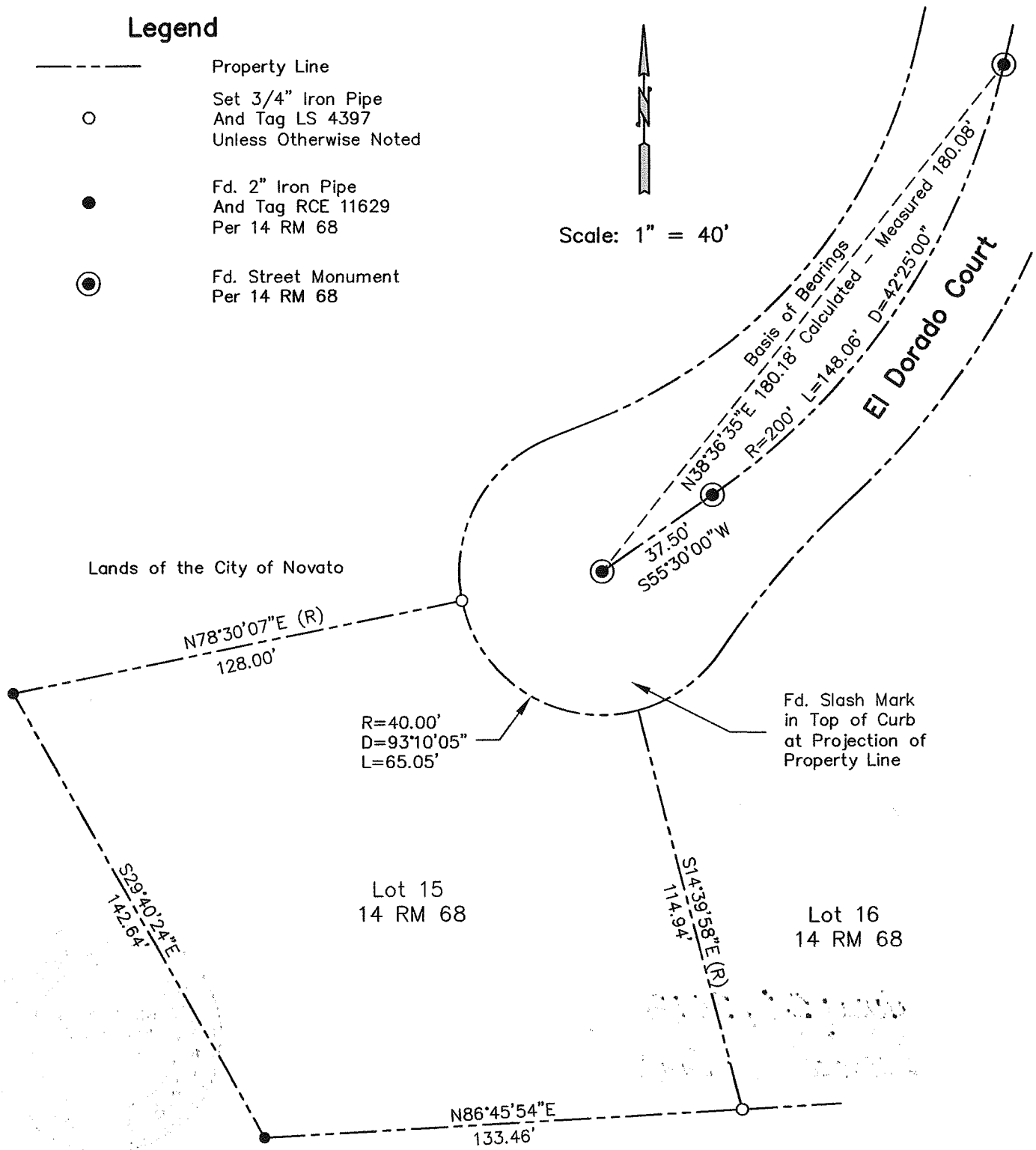
Corner Record

Legend

- Property Line
- Set 3/4" Iron Pipe
And Tag LS 4397
Unless Otherwise Noted
- Fd. 2" Iron Pipe
And Tag RCE 11629
Per 14 RM 68
- ⊙ Fd. Street Monument
Per 14 RM 68



Scale: 1" = 40'



2051 El Dorado Court
Novato, CA
APN 146-412-01

Corner Record

Property Survey
Lot 15, 14 RM 68
Marin County Records