

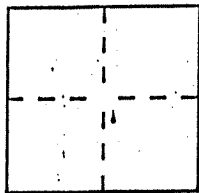
CORNER RECORD

Document Number 146 - 411 - 18

City of NOVATO

County of MARIN, California

Brief Legal Description LOT 11 THE OAKS UNIT 1 IARM 68



CORNER TYPE

Government Corner Control
Meander Property
Rancho Other
Date of Survey _____

COORDINATES (Optional)

N. _____
E. _____
Zone _____ Datum _____
Elev. _____

Corner — Left as found Found and tagged Established Reestablished Rebuilt

Identification and type of corner found: Evidence used to identify or procedure used to establish or reestablish the corner:
REESTABLISH FROM EXISTING MONUMENTS OF RECORD THE NORTHEAST AND NORTHWEST CORNER OF LOT 11 OF THE MAP OF THE OAKS IARM 68 AS SHOWN PER DIAGRAM ON SHEET 2

A description of the physical condition of the monument as found and as set or reset: AT NE COR / SET NAIL AND LS 5379 IN CONCRETE DRIVEWAY, AT NW COR / SET 1/2" REBAR WITH YELLOW PLASTIC CAP AFFIXED TO TOP EMBOSSED "PLS 5379 SCRANTON."

SURVEYOR'S STATEMENT

This Corner Record was prepared by me or under my direction in conformance with the Land Surveyors' Act on MARCH 20 1996.

Signed *Douglas J. Scranton* L.S. or R.C.E. Number PLS 5379
RENEWAL 6-30-96

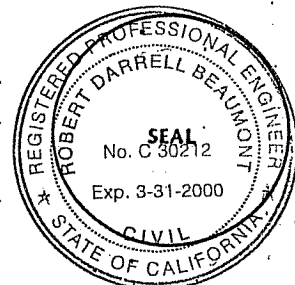


COUNTY SURVEYOR'S STATEMENT

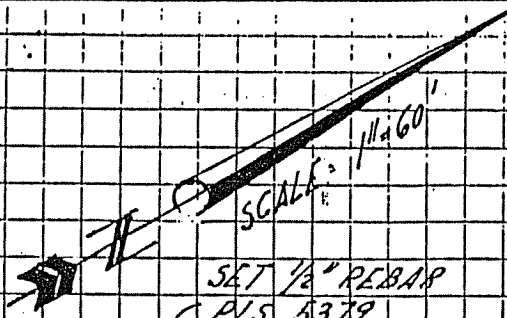
This Corner Record was received MARCH 25 1996 and examined

and filed 3-26 1996.

Signed *RFB* Title DCS



County Surveyor's Comment _____



SET 1/2" REBAR
PLS 5379

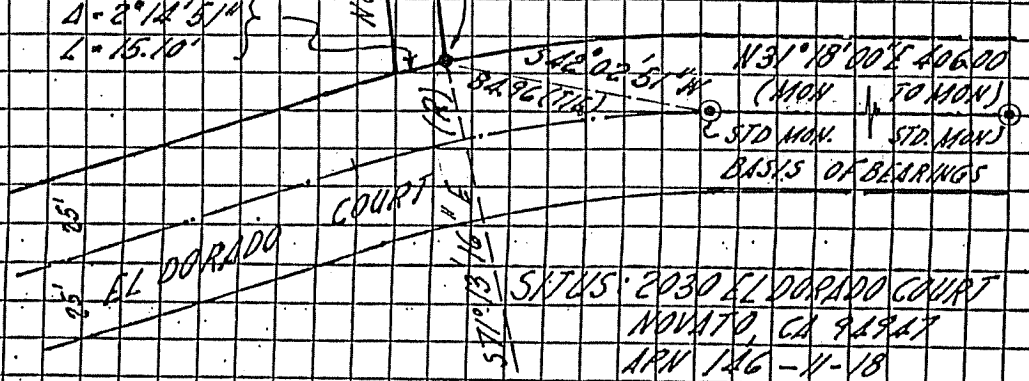


LOT II
THE OAKS UNIT I
14 PM. 68

LOT 10

R = 385'
Δ = 2°14'51"
L = 15.10'

SET NAIL AND TAG IN CONC. D/W



EL DORADO COURT

SITUS: 2030 EL DORADO COURT
NOVATO, CA 94947
APN 146-11-18

NOTE: EASEMENTS NOT SHOWN