

73 SCRANTON SURVEYING 845 OLIVE AVE SUITE 208 NOVATO, CA 94945

A.P. #146-411-18

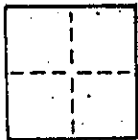
# CORNER RECORD

SHEET 1 of 1

COUNTY OF MARIN T. \_\_\_\_\_ R. \_\_\_\_\_ MERIDIAN \_\_\_\_\_ CALIFORNIA

CORNER TYPE: GOVT. CORNER  MEANDER  RANCHO  CONTROL  OTHER

CORNER IDENTIFICATION — DATE OF VISIT \_\_\_\_\_ 19\_\_\_\_



N/A

CORNER — LEFT AS FOUND  FOUND AND TAGGED  REESTABLISHED OBLITERATED CORNER  REBUILT

PHYSICAL DESCRIPTION OF CORNER FOUND; EVIDENCE AND METHOD USED TO IDENTIFY OR REESTABLISH

N/A

PHYSICAL DESCRIPTION OF MONUMENTS, REBUILT OR PERPETUATED

MAP of the OAKS, UNIT ONE, (14 RM 68)  
 SET ANGLE POINT OF RECORD MAP AS SHOWN BELOW FOR  
 LOT 11

CALIFORNIA COORDINATE SYSTEM ORDER: FIRST  SECOND  THIRD

STATIONS USED: NGS (USC & GS)  STATE  COUNTY  OTHER  STATION \_\_\_\_\_

ZONE \_\_\_\_\_ ELEVATION \_\_\_\_\_ NORTHINGS (Y) \_\_\_\_\_ EASTINGS (X) \_\_\_\_\_

SKETCH: (Include reference tie or witness points, remarks and topo of area)

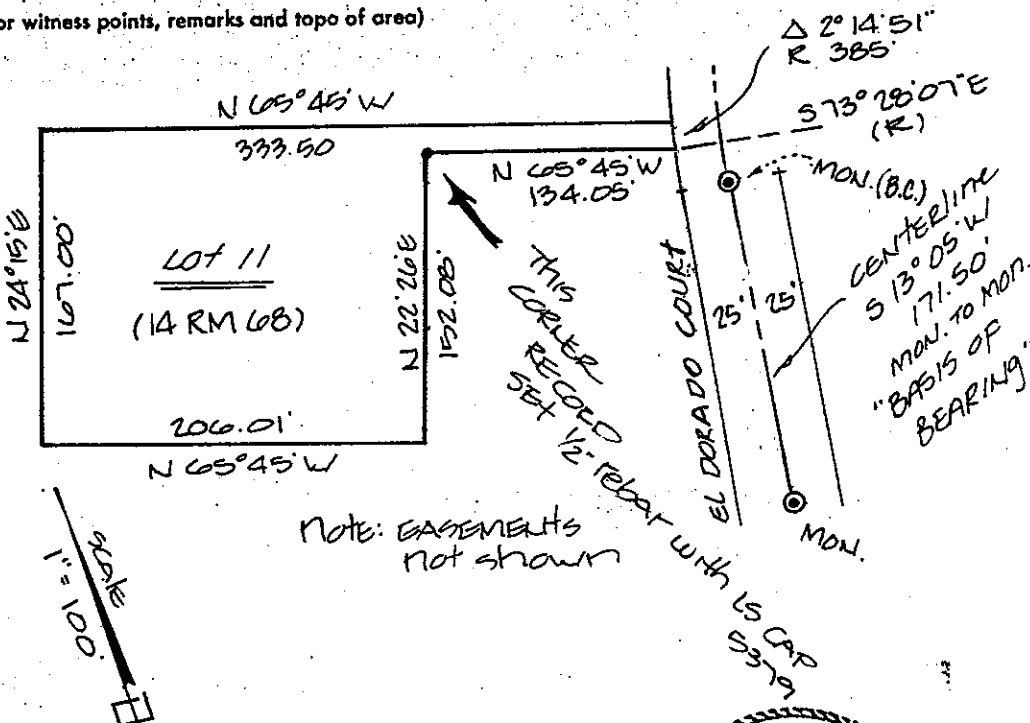
Lot 11

MAP of the OAKS  
Unit ONE

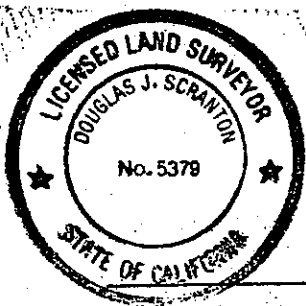
(14 RM 68)

APN 146-411-18

2030 EL DORADO CT.  
NOVATO, CA



NOTE: EASEMENTS  
not shown



### SURVEYOR'S CERTIFICATE

THIS CORNER RECORD WAS PREPARED BY ME OR UNDER MY DIRECTION IN CONFORMANCE WITH THE LAND SURVEYORS ACT ON AUGUST 26 19 91

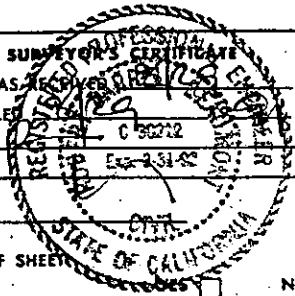
SIGNED: Douglas J. Scranton  
 L.S. or R.C.E. No.: PLS 5379 EXA. 6/30/92

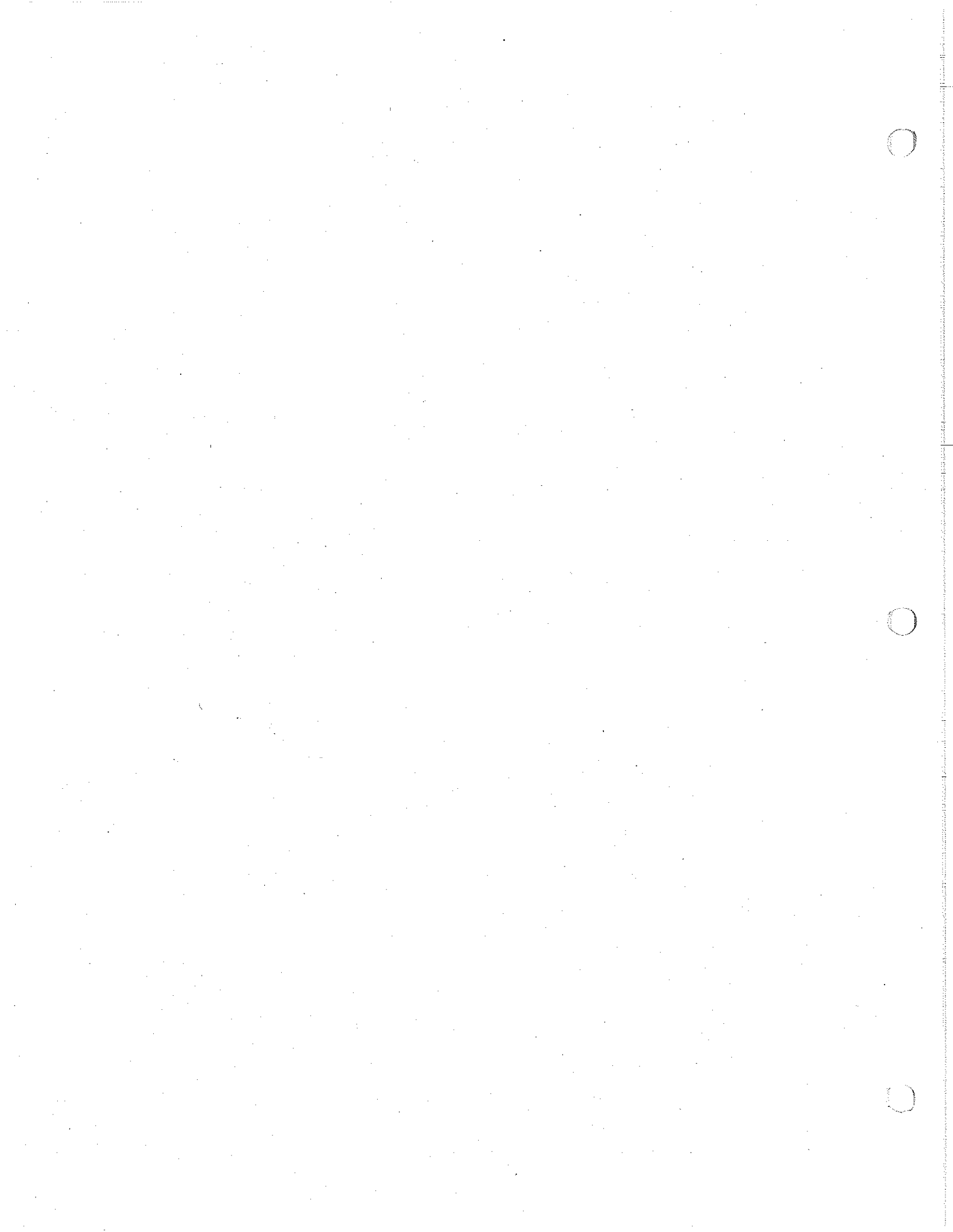
### COUNTY SURVEYOR'S CERTIFICATE

THE CORNER RECORD WAS RECEIVED AND EXAMINED AND FILED 1991

BY: [Signature]  
 TITLE: \_\_\_\_\_

DOCUMENT No. \_\_\_\_\_  
 STATEMENT ON BACK OF SHEET \_\_\_\_\_

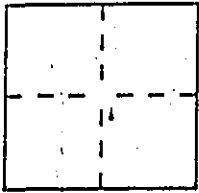




# CORNER RECORD

Document Number 146 - 411 - 18  
City of NOVATO County of MARIN, California

Brief Legal Description LOT 11 THE OAKS UNIT 1 1A RM 68



### CORNER TYPE

Government Corner  Control   
Meander  Property   
Rancho  Other   
Date of Survey \_\_\_\_\_

### COORDINATES (Optional)

N. \_\_\_\_\_  
E. \_\_\_\_\_  
Zone \_\_\_\_\_ Datum \_\_\_\_\_  
Elev. \_\_\_\_\_

Corner — Left as found  Found and tagged  Established  Reestablished  Rebuilt

Identification and type of corner found: Evidence used to identify or procedure used to establish or reestablish the corner:  
REESTABLISH FROM EXISTING MONUMENTS OF RECORD THE NORTHEAST AND NORTHWEST CORNER OF LOT 11 OF THE MAP OF THE OAKS 1A RM 68 AS SHOWN PER DIAGRAM ON SHEET 2

A description of the physical condition of the monument as found and as set or reset: AT NE COR / SET NAIL AND LS 5379 IN CONCRETE DRIVEWAY, AT NW COR / SET 1/2" REBAR WITH YELLOW PLASTIC CAP AFFIXED TO TOP EMBOSSED "PLS 5379 SCRANTON."

### SURVEYOR'S STATEMENT

This Corner Record was prepared by me or under my direction in conformance with the Land Surveyors' Act on MARCH 20 1996.

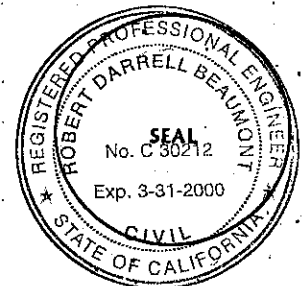
Signed Douglas J. Scranton L.S. or R.C.E. Number PLS 5379  
RENEWAL 6-30-96



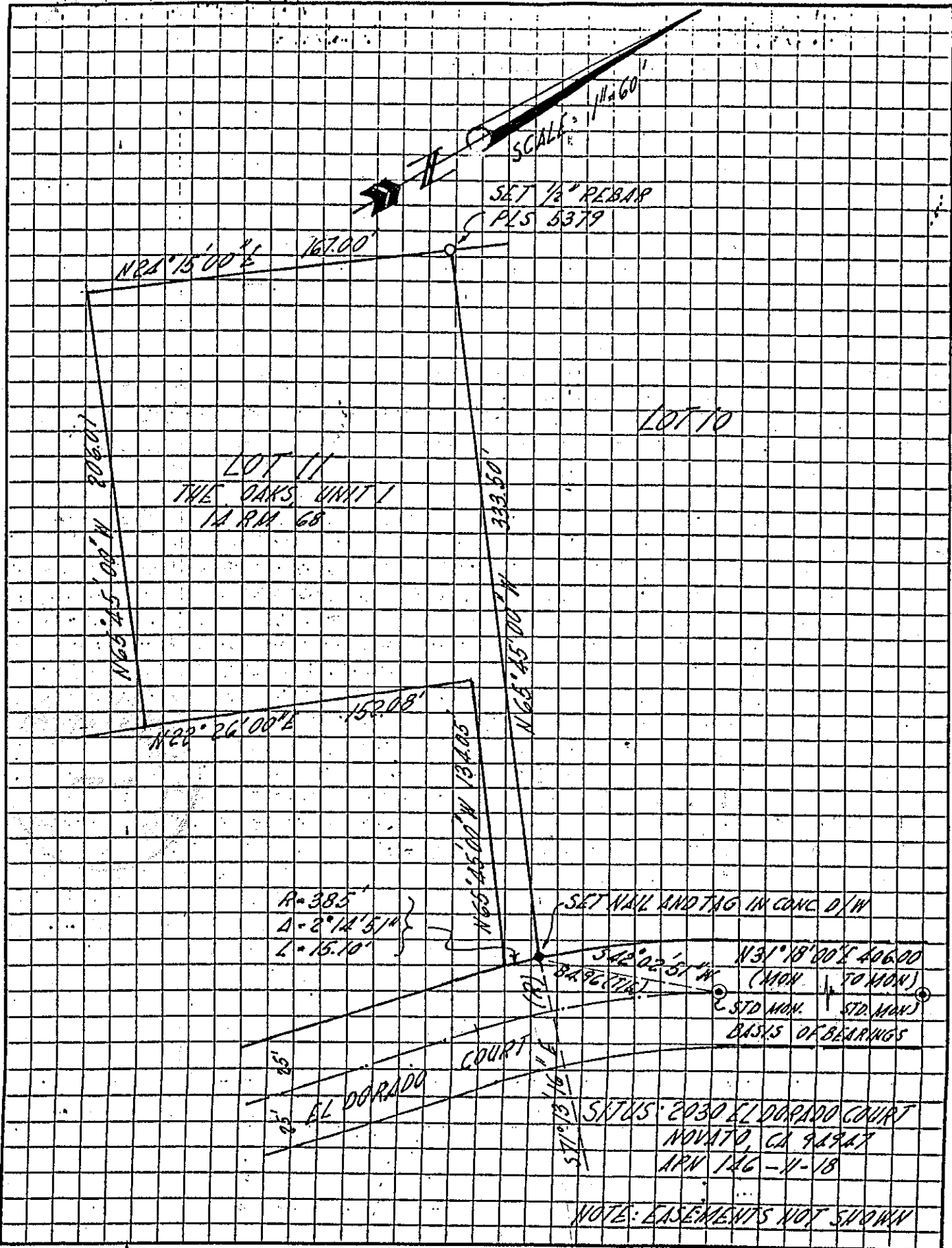
### COUNTY SURVEYOR'S STATEMENT

This Corner Record was received MARCH 25 1996 and examined and filed 3-26 1996.

Signed RRB Title DCS



County Surveyor's Comment \_\_\_\_\_



SCALE: 1/4" = 60'  
 SET 1/2" REBAR  
 PLS 5379

N 62° 15' 00" E 167.00'

103.02'  
 N 65° 45' 00" W 203.02'

LOT 11  
 THE OAKS UNIT 1  
 14 RM. 68

LOT 10

333.50'  
 N 65° 45' 00" W

N 22° 26' 00" E 152.03'

134.05'  
 N 65° 45' 00" W

R = 38.5'  
 Δ = 2° 14' 51"  
 L = 15.10'

SET NAIL AND TAG IN CONC. D/W

S 42° 02' 51" W 406.00'  
 84.96 (72.6)  
 N 31° 18' 00" E 406.00'  
 (MON. TO MON.)  
 STD. MON. STD. MAX.  
 BASIS OF BEARINGS

25' 25'  
 EL DORADO COURT  
 57' 0" 1/16" E

SITUS: 2030 EL DORADO COURT  
 NOVATO, CA 94947  
 APN 126-11-18

NOTE: EASEMENTS NOT SHOWN