

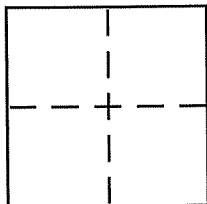
CORNER RECORD

Document Number APN 146-371-06

City of Novato

County of Marin, California

Brief Legal Description Lot 20 "Map of Marin Highlands Unit 3"
Volume 14 of Maps Page 12, Marin County Records



CORNER TYPE

Government Corner Control
Meander Property
Rancho Other
Date of Survey February 6, 2007

COORDINATES (Optional)

N. N/A
E. _____
Zone _____ NAD27 NAD83
NAD83 Epoch _____
Elev. _____
Vert. Datum: NGVD29 NAVD88
Meas. Units: Metric Imperial

Corner - Left as found Found and tagged Established Reestablished Rebuilt

Identification and type of corner found: Evidence used to identify or procedure used to establish or reestablish the corner:

Found Well Monuments Per Volume 14 of Maps Page 12.,
Marin County Records.
See Reverse -

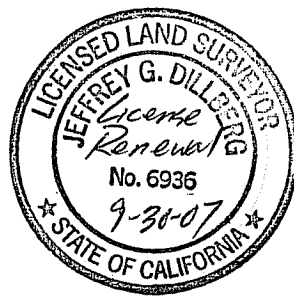
A description of the physical condition of the monument as found and as set or reset:

Set monuments at Property Corners of Lot 20,
Volume 14 of Maps Page 12.
See Reverse -

SURVEYOR'S STATEMENT

This Corner Record was prepared by me or under my direction in conformance with the Land Surveyor's Act on April 11 2007

Signed Jeffrey Dillberg P.L.S or R.C.E. No. 6936



COUNTY SURVEYOR'S STATEMENT

This Corner Record was received APRIL 12, 2007

and examined and filed APRIL 17, 2007

Signed Craig Tackabery P.L.S or R.C.E. No. 7128

Title COUNTY SURVEYOR



County Surveyor's Comment _____

LOT 19

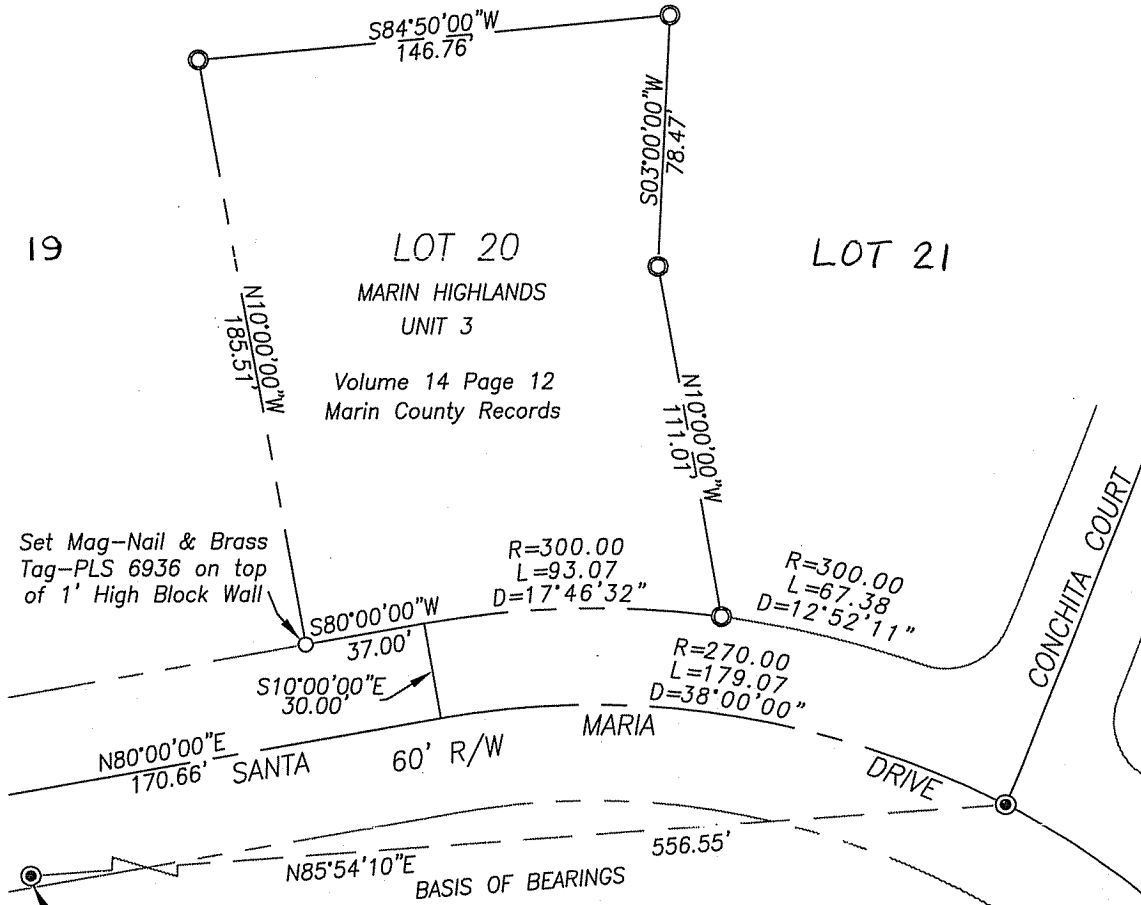
LOT 20

LOT 21

MARIN HIGHLANDS
UNIT 3

Volume 14 Page 12
Marin County Records

Set Mag-Nail & Brass
Tag-PLS 6936 on top
of 1' High Block Wall



Point of Curve Well Monument along
Santa Maria Drive at Lot 14 frontage.

- Found Well Monument
- Set 1/2" Rebar & Brass Tag-PLS 6936



SCALE 1 Inch =
60 Feet