

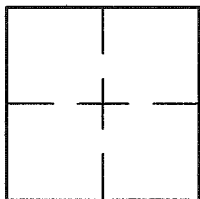
CORNER RECORD

Document Number A.P. 146-310-34,36

City of NOVATO

County of MARIN, California

Brief Legal Description PARCELS 3,4 PER 4 R.M. 61



CORNER TYPE COORDINATES (Optional)

Government Corner Control
Meander Property
Rancho Other

N. _____
E. _____
Zone NAD27 NAD83
NAD83 Epoch _____
Elev. _____
Vert. Datum: NGVD29 NAVD88
Meas. Units: Metric Imperial

Date of Survey 3/13/15

Corner- Left as found Found and tagged Established Reestablished Rebuilt

Identification and type of corner found: Evidence used to identify or procedure used to establish or reestablish the corner:
ESTABLISHED THE COMMON LINE BETWEEN LOTS 3 AND 4 USING FOUND PIPE AND TAGS L.S. 2535 ALONG
THE 50' ROADWAY EASEMENT PER 4 P.M. 61 AND AS SHOWN ON SHEET 2.

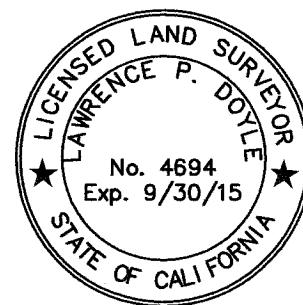
A description of the physical condition of the monument as found and as set or reset: SEE SHEET 2.

SURVEYOR'S STATEMENT

This Corner Record was prepared by me or under my direction in conformance with

the Land Surveyor's Act on MARCH 25, 2015

Signed Lawrence P. Doyle P.L.S. or R.C.E. No. P.L.S. 4694



COUNTY SURVEYOR'S STATEMENT

This Corner Record was received APRIL 17, 2015

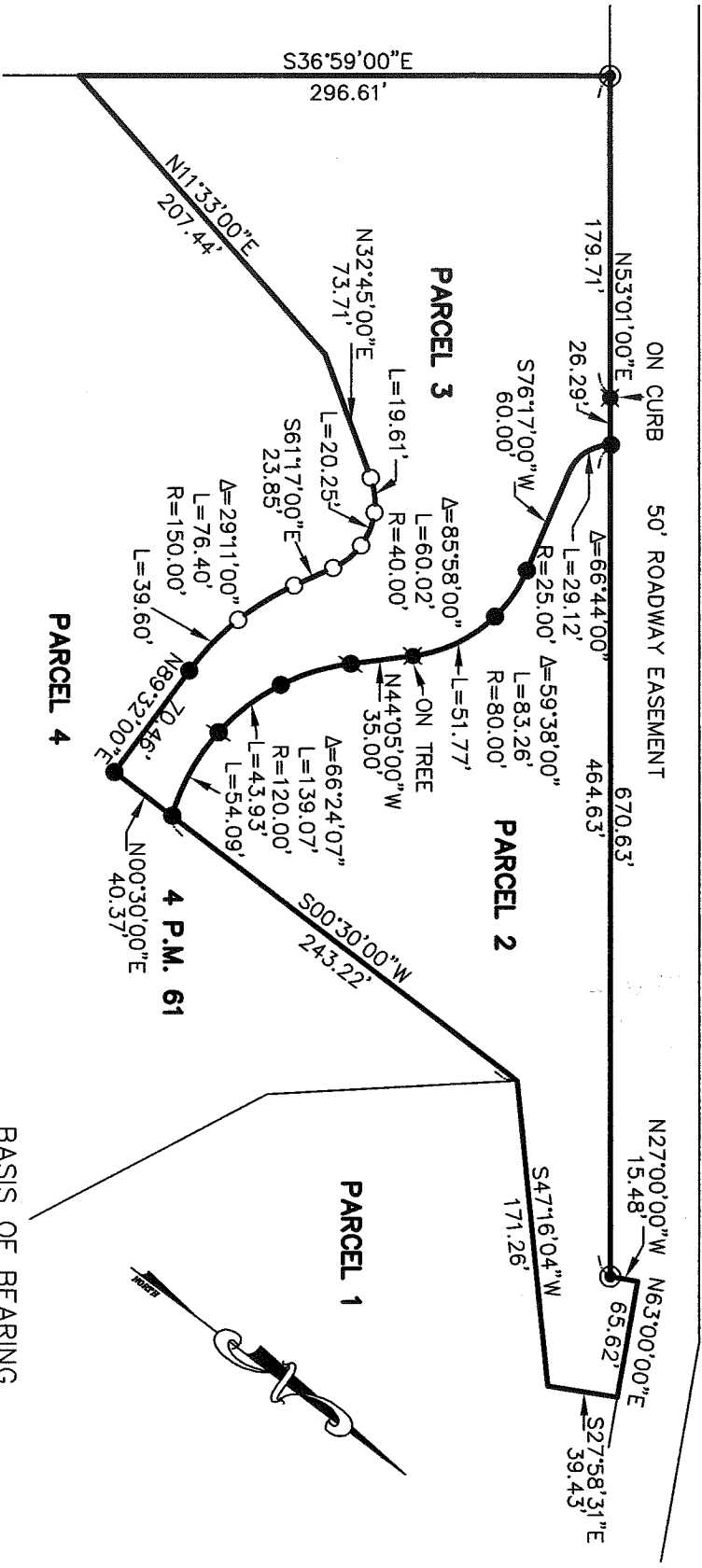
and examined and filed MAY 5th, 2015

Signed Richard G. Simonitch P.L.S. or R.C.E. No. 7821

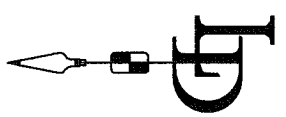
Title DEPUTY



County Surveyor's Comment _____



- LEGEND**
- FOUND PIPE/TAG L.S. 2535
 - FOUND PIPE/PLUG L.S. 4694
 - ⊙ SET NAIL/TAG L.S. 4694
 - ⊙ SET REBAR/CAP L.S. 4694
 - SET PIPE/PLUG L.S. 4694



CORNER RECORD	
PARCELS 2 & 3 / 4 P.M. 61	
NOVATO	CALIFORNIA
MARIN COUNTY	
LAWRENCE P. DOYLE	
LAND SURVEYOR/CIVIL ENGINEER	
100 HELENS LANE MILL VALLEY CA 94941 (415-388-9585)	
SCALE: 1" = 100'	DRAWN BY:
DATE: 3/25/15	SHEET 2 OF 2
DRAWING NO. 2531	