

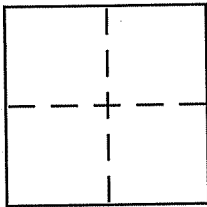
CORNER RECORD

Document Number APN 146-280-68

City of NOVATO

County of MARIN, California

Brief Legal Description PARCEL C, BERKEY DIVISION OF LAND, BK. 6 P.M. @ PG. 59 M.C.R.



CORNER TYPE

Government Corner Control
Meander Property
Rancho Other
Date of Survey FEBRUARY 1, 2006

COORDINATES (Optional)

N. _____
E. _____
Zone _____ NAD27 NAD83
NAD83 Epoch _____
Elev. _____
Vert. Datum: NGVD29 NAVD88
Meas. Units: Metric Imperial

Corner - Left as found Found and tagged Established Reestablished Rebuilt

Identification and type of corner found: Evidence used to identify or procedure used to establish or reestablish the corner:

HELD RECORD BEARINGS AND DISTANCES FROM FOUND MONUMENTS AS SHOWN ON PARCEL MAP "BERKEY DIVISION OF LAND", BK. 6 P.M. PG. 59, M.C.R. TO ESTABLISH AND MONUMENT THE CORNERS OF PARCEL C, WHERE IT FRONTS THE LANDS OF THE COUNTY OF MARIN PER 2509 OR 315 AND ALSO A WITNESS TO THE MOST EASTERLY CORNER COMMON WITH PARCEL A. SEE SKETCH PAGE 2.

A description of the physical condition of the monument as found and as set or reset: 1.) SET 1/2" IRON PIPE AND CAP L.S. 3890 ALONG COUNTY RIGHT OF WAY OF PARCEL C. 2.) SET 1/2" IRON PIPE L.S. 3890, WITNESS CORNER TO POINT COMMON WITH PARCELS A & C ALONG EASTERLY LINE OF PARCEL C. AFTER DILIGENT SEARCH NO 2"x2" HUBS AND TAGS, L.S. 3049 SET FEB 6 P.M. 59 WERE RECOVERED THIS SURVEY.

SURVEYOR'S STATEMENT

This Corner Record was prepared by me or under my direction in conformance with the Land Surveyor's Act on Feb. 1, 2006

Signed [Signature] P.L.S or R.C.E. No. 3890



COUNTY SURVEYOR'S STATEMENT

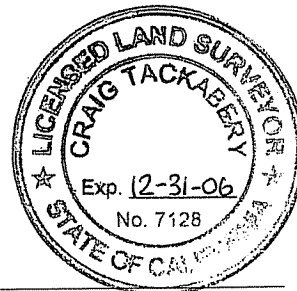
This Corner Record was received FEBRUARY 13, 2006

and examined and filed APRIL 6, 2006

Signed [Signature] P.L.S or R.C.E. No. 7128

Title COUNTY SURVEYOR

County Surveyor's Comment _____

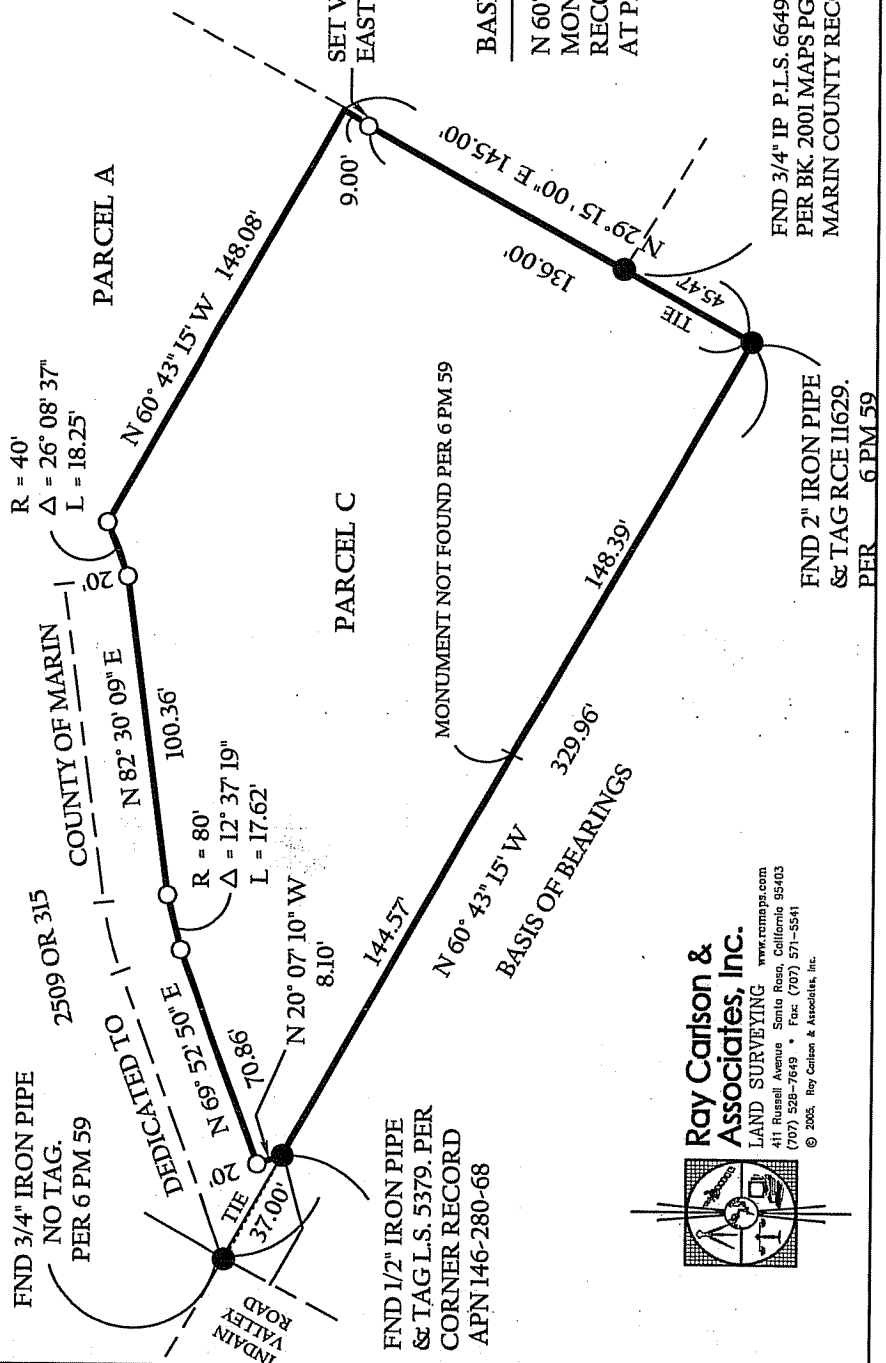
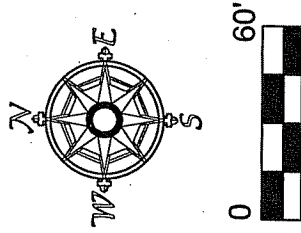


NOTE: ALL DIMENSIONS HEREON ARE RECORD AND MEASURED PER PARCEL MAP BERKOV DIVISION OF LAND, BOOK 6 OF PARCEL MAPS AT PAGE 59, MARIN COUNTY RECORDS. UNLESS NOTED OTHERWISE.

LEGEND

- = SET 1/2" IRON PIPE AND TAG L.S. 3890
- = FOUND IRON PIPE AS NOTED
- FND = FOUND
- = CENTERLINE ROAD PER BK 6 MAPS PG. 59

PARCEL MAP BERKOV DIVISION OF LAND 6 PM 59



Ray Carlson & Associates, Inc.
 LAND SURVEYING
 411 Russell Avenue, Santa Rosa, California 95403
 (707) 528-7649 • Fax (707) 571-5541
 © 2006, Ray Carlson & Associates, Inc.