

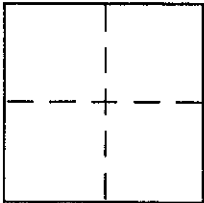
**CORNER RECORD**

Document Number A.P.N. 146-280-13

City of VICINITY OF NOVATO

County of MARIN, California

Brief Legal Description LANDS OF SMITH PER 2002 O.R. 95843



**CORNER TYPE**

Government Corner  Control   
Meander  Property   
Rancho  Other   
Date of Survey 8-26-03

**COORDINATES (Optional)**

N. \_\_\_\_\_  
E. \_\_\_\_\_  
Zone \_\_\_\_\_ NAD27  NAD83   
NAD83 Epoch \_\_\_\_\_  
Elev. \_\_\_\_\_  
Vert. Datum: NGVD29  NAVD88   
Meas. Units: Metric  Imperial

Corner - Left as found  Found and tagged  Established  Reestablished  Rebuilt

Identification and type of corner found: Evidence used to identify or procedure used to establish or reestablish the corner:

=SEE OVER=  
LOT ADJACENT TO LOT 10 OF 15 RM 87

A description of the physical condition of the monument as found and as set or reset:

=SEE OVER=

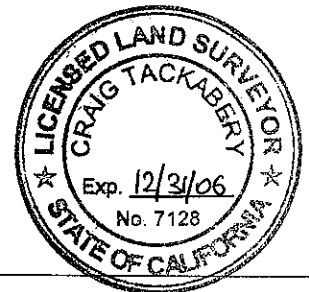
**SURVEYOR'S STATEMENT**

This Corner Record was prepared by me or under my direction in conformance with the Land Surveyor's Act on SEPTEMBER 5 2003  
Signed David Contreras P.L.S. or R.C.E. No. 5065



**COUNTY SURVEYOR'S STATEMENT**

This Corner Record was received SEPTEMBER 5, 2003  
and examined and filed SEPTEMBER 16, 2003  
Signed Craig Tackabery P.L.S. or R.C.E. No. 7128  
Title COUNTY SURVEYOR



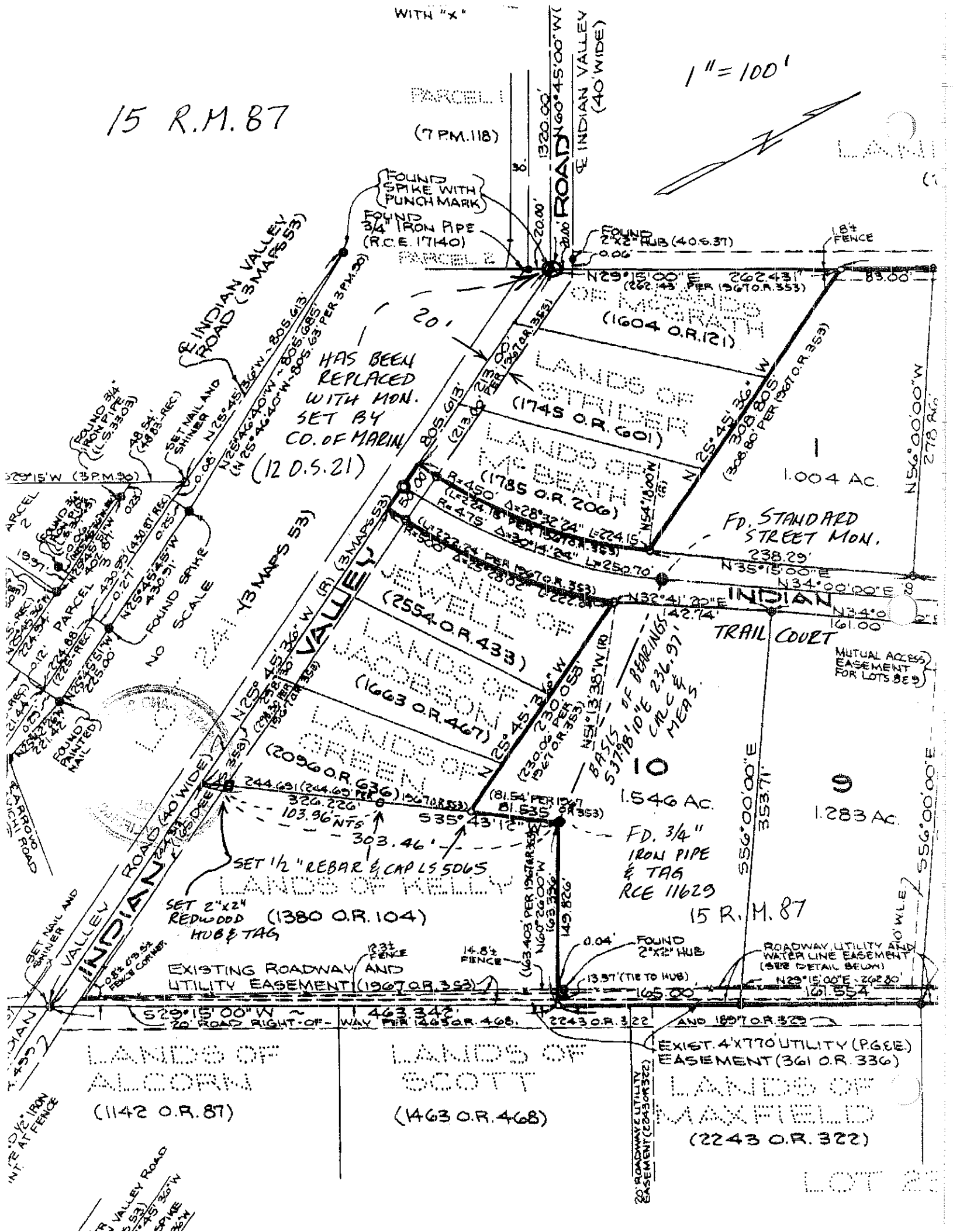
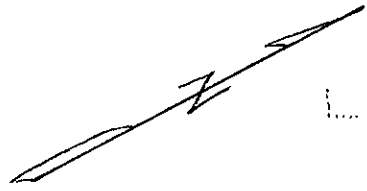
County Surveyor's Comment \_\_\_\_\_

15 R.M. 87

WITH "X"

PARCEL 1  
(7 P.M. 118)

1" = 100'



HAS BEEN REPLACED WITH MON. SET BY CO. OF MARIN (12 D.S. 21)

10  
BASIS OF BEARINGS  
S 71° 08' 10" E 236.97' MEAS.  
FD. 3/4" IRON PIPE & TAG RCE 11629

SET 2"x24" REDWOOD HUB & TAG (1380 O.R. 104)

EXISTING ROADWAY AND UTILITY EASEMENT (1907 O.R. 353)

LANDS OF ALCORN (1142 O.R. 87)

LANDS OF SCOTT (1463 O.R. 468)

EXIST. 4'x77' UTILITY EASEMENT (361 O.R. 336)  
LANDS OF MAXFIELD (2243 O.R. 322)

LOT 23