

(For County Use Only)

RECEIVED 10F 1
APR 26 1985

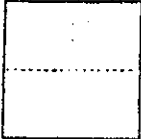
CORNER RECORD

Marin County Public Works

COUNTY OF Marin T. 3 N (projected) R. 7 W (projected) MD MERIDIAN CALIFORNIA

CORNER TYPE: GOV'T. CORNER MEANDER RANCHO CONTROL OTHER

CORNER IDENTIFICATION — DATE OF VISIT April 18, 1985 A.P.# 146-271-05



Being an angle point in the westerly line of Lot 22, "Map of Wild Horse Valley", filed for record on Sept. 21, 1964 in Volume 12 of Maps at Page 97, Marin County Records.

CORNER — LEFT AS FOUND FOUND AND TAGGED REESTABLISHED OBLITERATED CORNER REBUILT

PHYSICAL DESCRIPTION OF CORNER FOUND; EVIDENCE AND METHOD USED TO IDENTIFY OR REESTABLISH

Found an old, deteriorated 2" x 2" redwood hub at an angle point in the westerly line of Lot 22. (See sketch below)

PHYSICAL DESCRIPTION OF MONUMENTS REBUILT OR PERPETUATED

Removed the remains of the old hub and placed in the same position a 1/2" x 30" iron pipe monument with a plastic plug stamped L.S. 4419

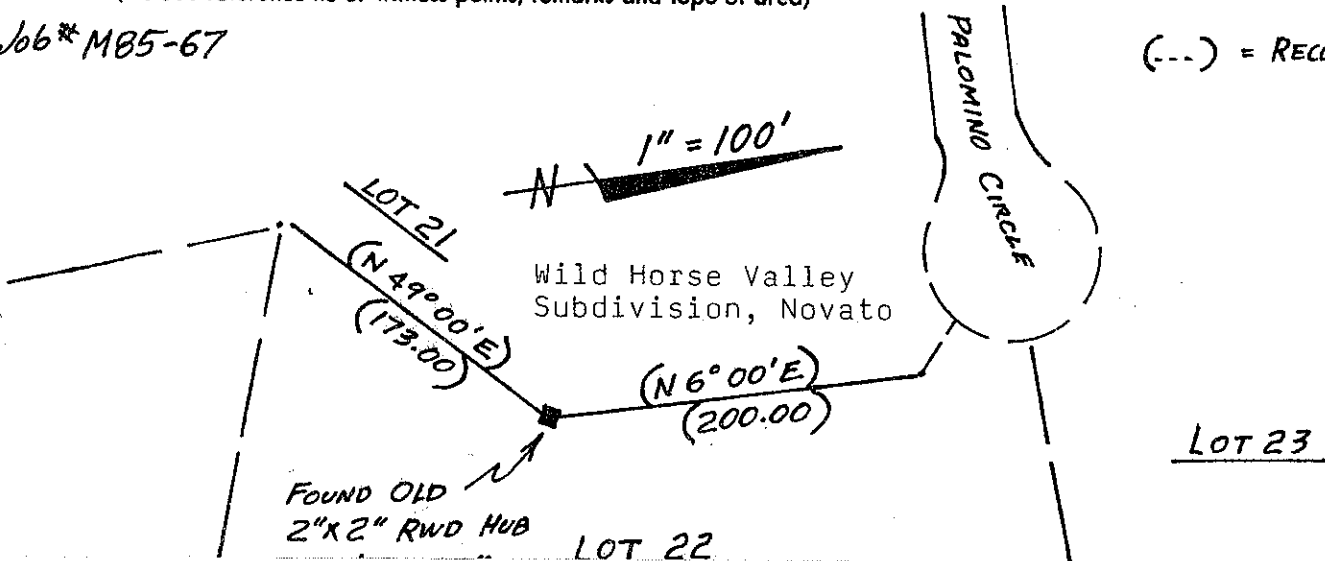
CALIFORNIA COORDINATE SYSTEM ORDER: FIRST SECOND THIRD
STATIONS USED: NGS (USC & GS) STATE COUNTY OTHER STATION _____ STATION _____
ZONE _____ ELEVATION _____ NORTHINGS (Y) _____ EASTINGS (X) _____

(Fold)

SKETCH: (Include reference tie or witness points, remarks and topo of area)

Job # MB5-67

(...) = RECORD DATA





SURVEYOR'S CERTIFICATE
THIS CORNER RECORD WAS PREPARED BY ME OR UNDER MY
DIRECTION IN CONFORMANCE WITH THE LAND SURVEYORS ACT
ON APRIL 24 1985
SIGNED: [Signature] 4419
L.S. or R.C.E. No.:

STATEMENT ON BACK OF SHEET
DOCUMENT No. No. 18,652
BY: [Signature]
TITLE: County Surveyor
AND EXAMINED AND FILED APRIL 29 1985
THE CORNER RECORD WAS RECEIVED APRIL 26 1985
 NO YES

