

CORNER RECORD

COUNTY OF Marin T. 3 N (projected) R. 7 W (projected) M.D. 8 MERIDIAN CALIFORNIA

CORNER TYPE: GOV'T. CORNER MEANDER RANCHO CONTROL OTHER

CORNER IDENTIFICATION — DATE OF VISIT Nov. 15 1983



Being a portion of Lot 218 - Amended Map No. 1 Of Subd. "C" of Novato Ranch, 3 Map 53.
A.P. No. 146-25-37

CORNER — LEFT AS FOUND FOUND AND TAGGED REESTABLISHED OBLITERATED CORNER RESULT

PHYSICAL DESCRIPTION OF CORNER FOUND, EVIDENCE AND METHOD USED TO IDENTIFY OR REESTABLISH

Original Parcel Map monument not found at most southerly corner of Parcel 1. I used Parcel Map bearings and distances to reestablish the position of the obliterated corner.

PHYSICAL DESCRIPTION OF MONUMENTS REBUILT OR PERPETUATED

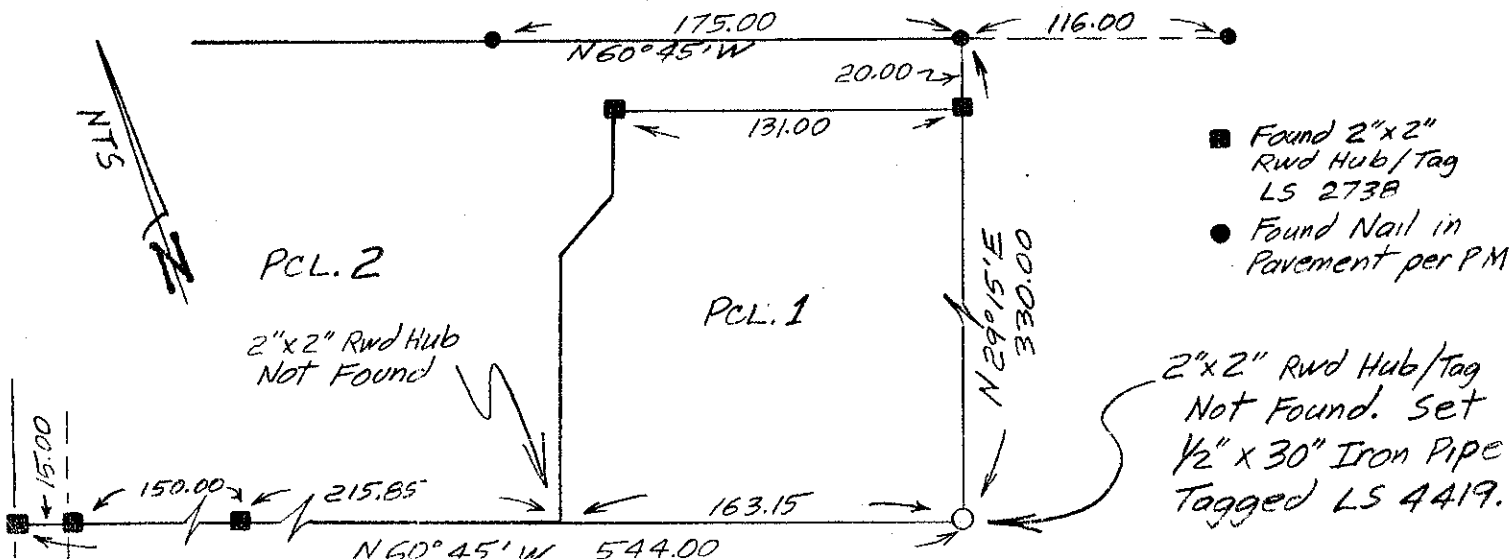
I set a 1/2" x 30" iron pipe monument tagged L.S. 4419 (see below)

CALIFORNIA COORDINATE SYSTEM ORDER: FIRST SECOND THIRD
STATIONS USED: NGS (USC & GS) STATE COUNTY OTHER STATION _____ STATION _____
ZONE _____ ELEVATION _____ NORTHINGS (Y) _____ EASTINGS (X) _____

(Fold)

SKETCH: (Include reference tie or witness points, remarks and topo of area)

PARCEL MAP - DIVISION OF STEINIGER PROPERTY
BK II OF PARCEL MAPS Pg 51 - MARIN CO. RECORDS



NO YES



COUNTY SURVEYOR'S CERTIFICATE
 THE CORNER RECORD WAS RECEIVED November 17 1983
 AND EXAMINED AND FILED Jan 25 19 84
 BY *[Signature]*
 COUNTY SURVEYOR



SURVEYOR'S CERTIFICATE
 THIS CORNER RECORD WAS PREPARED BY ME OR UNDER MY
 DIRECTION IN CONFORMANCE WITH THE LAND SURVEYORS ACT
 ON NOV 15 1983
 SIGNED: *[Signature]*
 L.S. or R.C.E. No. 4419