

CORNER RECORD

Document Number: APN 146-241-010

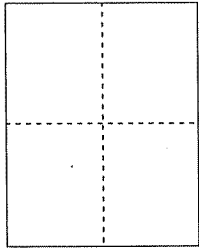
-10

City of Novato

County of Marin, California

Job # 2004-077

Brief Legal Description: Lot 70, "Map of Wild Horse Valley" filed in Volume 12 of Maps, at page 97, Marin County Records.



CORNER TYPE

Government Corner Control
 Meander Property
 Rancho Other
 Date of Survey: December 8, 2003

COORDINATES (Optional)

N. _____
 E. _____
 Zone: _____ NAD27 NAD83
 NAD83 Epoch: _____
 Elev: _____
 Vert. Datum: NGVD29 NGVD29
 Meas. Units: Metric Imperial

Corner-- Left as found Found and tagged Established Reestablished Rebuilt

Identification and type of corner found: Evidence used to identify or procedure used to establish or reestablish the corner: Found record monuments on Wild Horse Valley Drive. Used existing monuments to establish monuments on Lot 70.

A description of the physical condition of the monument as found and as set or reset: The found monuments were in good condition and matched the character of the monuments on the map. The monuments set at the established corners consist of a 1/2" rebar with plastic cap stamped "PLS 5520".

SURVEYOR'S STATEMENT

This Corner Record was prepared by me or under my direction in conformance with

The Land Surveyors' Act on 23 SEPT, 2004

Signed [Signature] P.L.S. or R.C.E. No.: 5520



COUNTY SURVEYOR'S STATEMENT

This Corner Record was received SEPTEMBER 30, 2004

and examined and filed OCTOBER 13, 2004

Signed: [Signature] P.L.S. or R.C.E. No.: 7128

Title: COUNTY SURVEYOR

County Surveyor's Comments _____

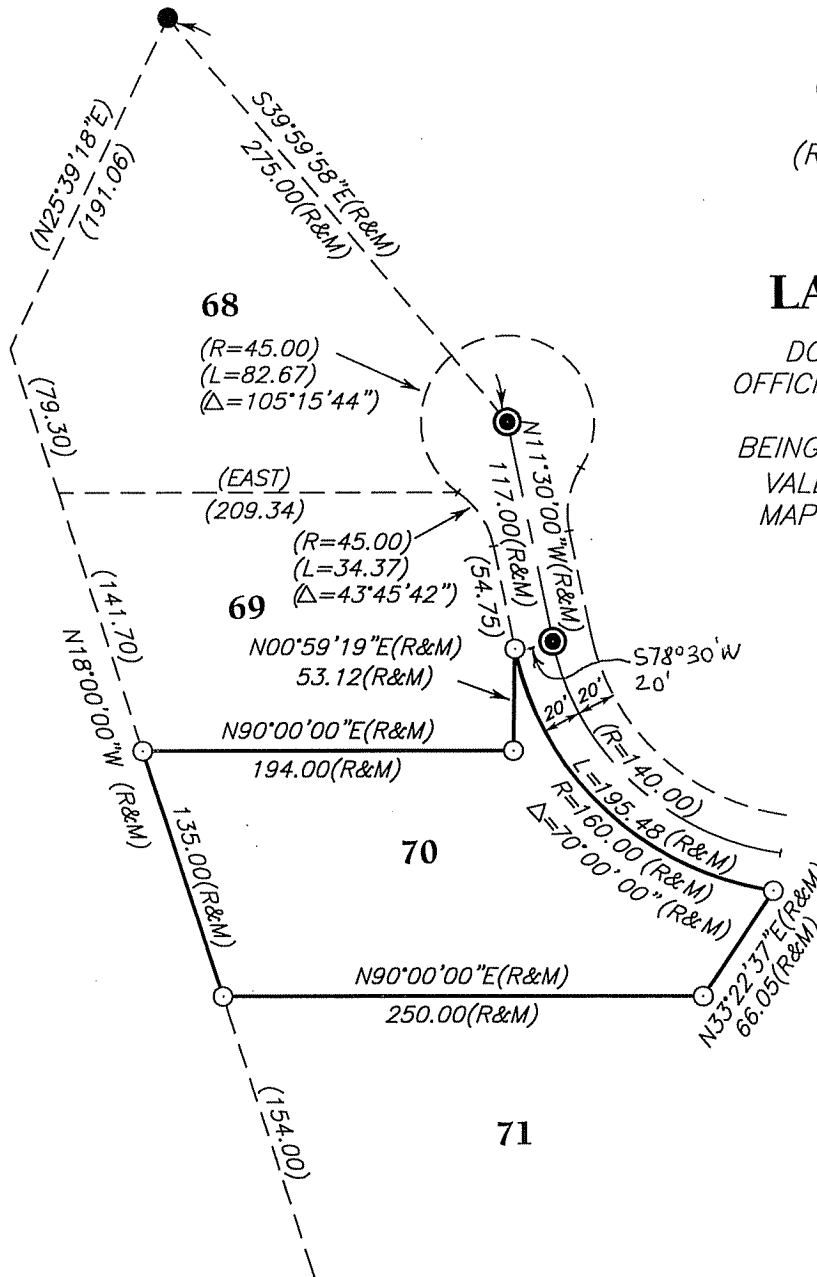
APN 146-241-010

NOTE

RECORD DATA FROM "MAP OF WILD HORSE VALLEY", VOLUME 12 MAPS 97

LEGEND

- FOUND 1/2" IRON PIPE TAGGED RCE 30465, NO RECORD
- ⊙ FOUND WELL MONUMENT WITH NAIL IN CONCRETE
- SET 1/2" REBAR WITH PLASTIC CAP, PLS 5520
- () RECORD DATA AS PER VOLUME 12 MAPS 97
- (R&M) RECORD AND MEASURED

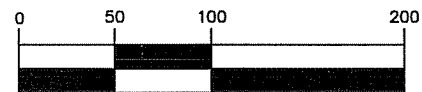


LANDS OF WALLACH

DOCUMENT NO. 2003-0108502
OFFICIAL RECORDS, COUNTY OF MARIN

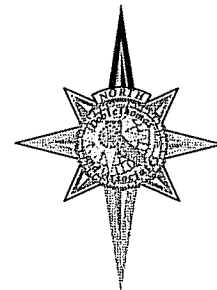
BEING LOT 70, "MAP OF WILD HORSE VALLEY", FILED IN VOLUME 12 OF MAPS AT PAGE 97, MARIN COUNTY RECORDS

GRAPHIC SCALE



(IN FEET)

1 inch = 100 ft.



DobleThomas & Associates, Inc.
LAND SURVEYING, ENGINEERING & MAPPING

134 South Cloverdale Boulevard, Cloverdale, California 95425
Branch Offices in Windsor and Guerneville

All Matters Regarding Land™

phone (707) 894-3182
fax (707) 894-4240
toll free (800) 757-8783
www DobleThomas.com

JOB #2004-077