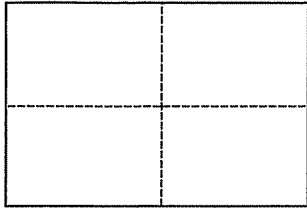


CORNER RECORD

Document Number 146-180-66 & 67

City of Novato County of Marin California

Brief Legal Description Parcel One & Two of 2003 PM 298



CORNER TYPE

**COORDINATES
(Optional)**

Government Corner Control North _____
Meander Property East _____
Rancho Other Zone _____ Datum _____
Date of Survey January 17, 2012 Elev. _____

Corner _____ Left as found Found and tagged Established Reestablished Rebuilt

Identification and type of corner found: Evidence used to identify or procedure used to establish or reestablish the corner:

Found existing 3/4" Iron Pipes Tagged LS 3201 Per 03 PM 298. Held same for Basis of Bearing (See Attached Plat)

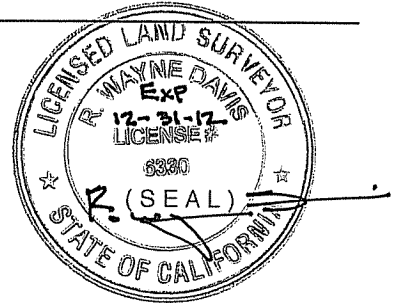
A description of the physical condition of the monument as found and as set or reset: _____

Set Hub & Tack as shown on attached plat

SURVEYOR'S STATEMENT

This Corner Record was prepared by me or under my direction in conformance with the Land Surveyors' Act on January 26, 2012

Signed [Signature] L.S. or R.C.E. Number L.S. 6330



COUNTY SURVEYOR'S STATEMENT

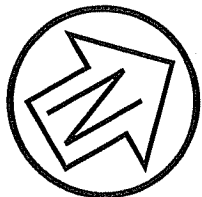
This Corner Record was received MARCH 13, 2012

and examined and filed APRIL 11, 2012

Signed [Signature] Title COUNTY SURVEYOR



County Surveyor's Comment _____



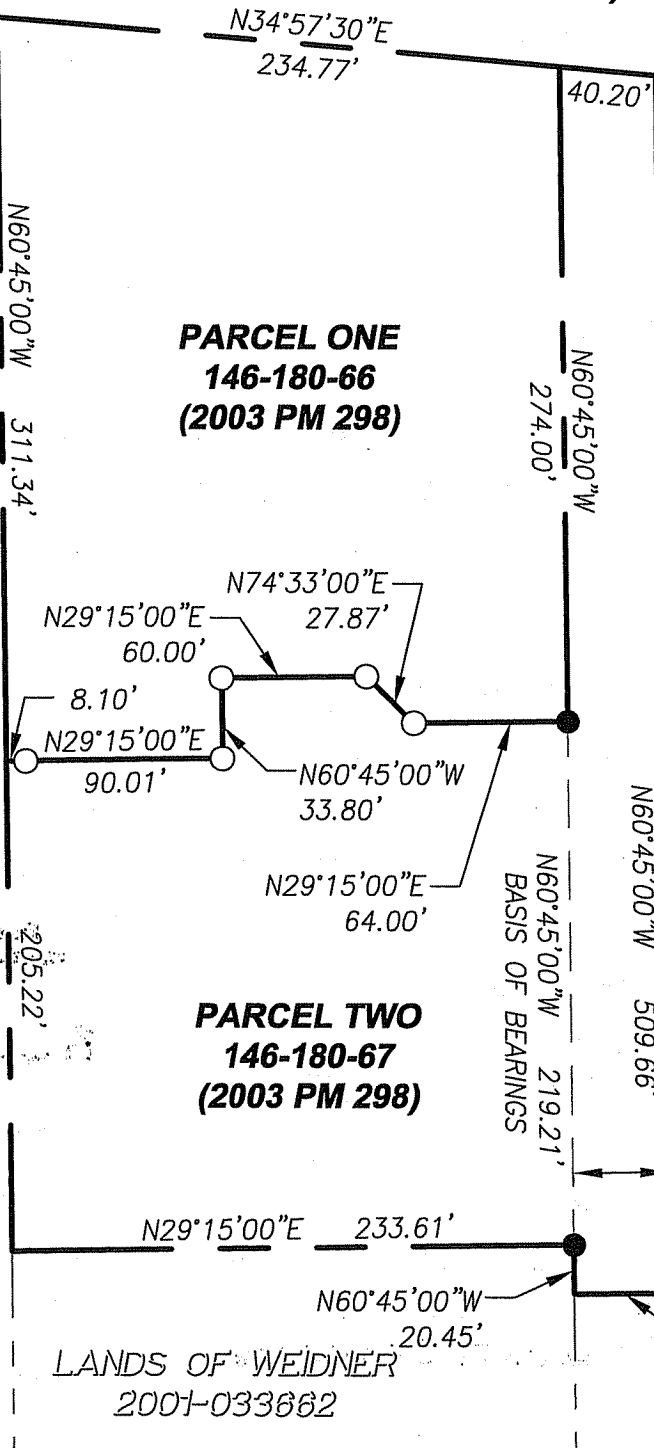
Graphic Scale (in feet)



1 inch = 80 ft.

WILSON AVENUE (R/W VARIES)

LANDS OF EGIDE
2005-052066



LANDS OF MCINERNEY
1993-023741

LEGEND

- FOUND 3/4" IRON PIPE & TAG LS 3201
PER 2003 PM 298
- SET HUB & TACK

LANDS OF HARDY
1994-024702

LANDS OF WEIDNER
2001-033662

LANDS OF WEIDNER
1993-035569

CSW ST2

CSW/Stuber-Stroeh Engineering Group, Inc.

Civil & Structural Engineers | Surveying & Mapping | Environmental Planning
Land Planning | Construction Management

45 Leveroni Court
Novato, CA 94949

tel: 415.883.9850
fax: 415.883.9835

http://www.cswst2.com

©2012

Rev.

Job No. 666440

Date: 01/26/12

Scale: 1" = 80'

CORNER RECORD

APN: 146-180-66 & 67
WILSON AVENUE

NOVATO

MARIN COUNTY

CALIFORNIA