

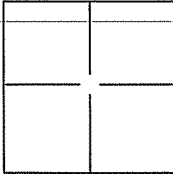
CORNER RECORD

Document Number A.P.N. 146-141-07

City of Novato Area

County of Marin, California

Brief Legal Description Lot 7, Marin Highlands Unit 1, 2241 Vineyard Road, 12 RM 83.



CORNER TYPE

Government Corner Control
 Meander Property
 Rancho Other

Date of Survey 11 July 2011

COORDINATES(Optional)

N. _____
 E. _____
 Zone _____ NAD27N AD83
 NAD83 Epoch _____
 Elev. _____
 Vert. Datum: NGVD29 NADV88
 Meas. Units: Metric Imperial

Corner - Left as found Found and tagged Established Reestablished Rebuilt

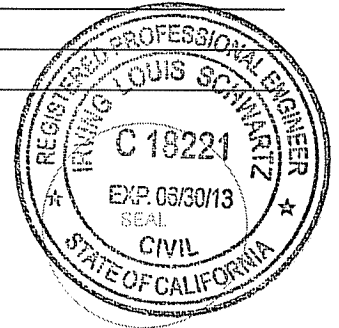
Identification and type of corner found: Evidence used to identify or procedure used to establish or reestablish the corner:
Found Standard Street Monuments (2) per 12 RM 83, See Exhibit "B".

A description of the physical condition of the monument as found and as set or reset: _____
Set most northerly, most southerly and two along northeasterly line (4 corners) on Lot 7, 12 RM 83, See Exhibit "A".

SURVEYOR'S STATEMENT

This Corner Record was prepared by me or under my direction in conformance with the Land Surveyor's Act on AUGUST 16, 2011.

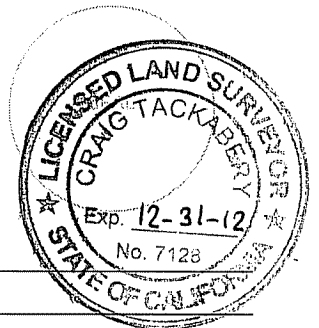
Signed [Signature] P.L.S. or R.C.E. No.: 18221



COUNTY SURVEYOR'S STATEMENT

This Corner Record was received JULY 19, 2011 and examined and filed AUGUST 16, 2011

Signed [Signature] P.L.S. or R.C.E. No.: 7128
 Title COUNTY SURVEYOR
 County Surveyor's Comment _____





SCALE: 1" = 30'

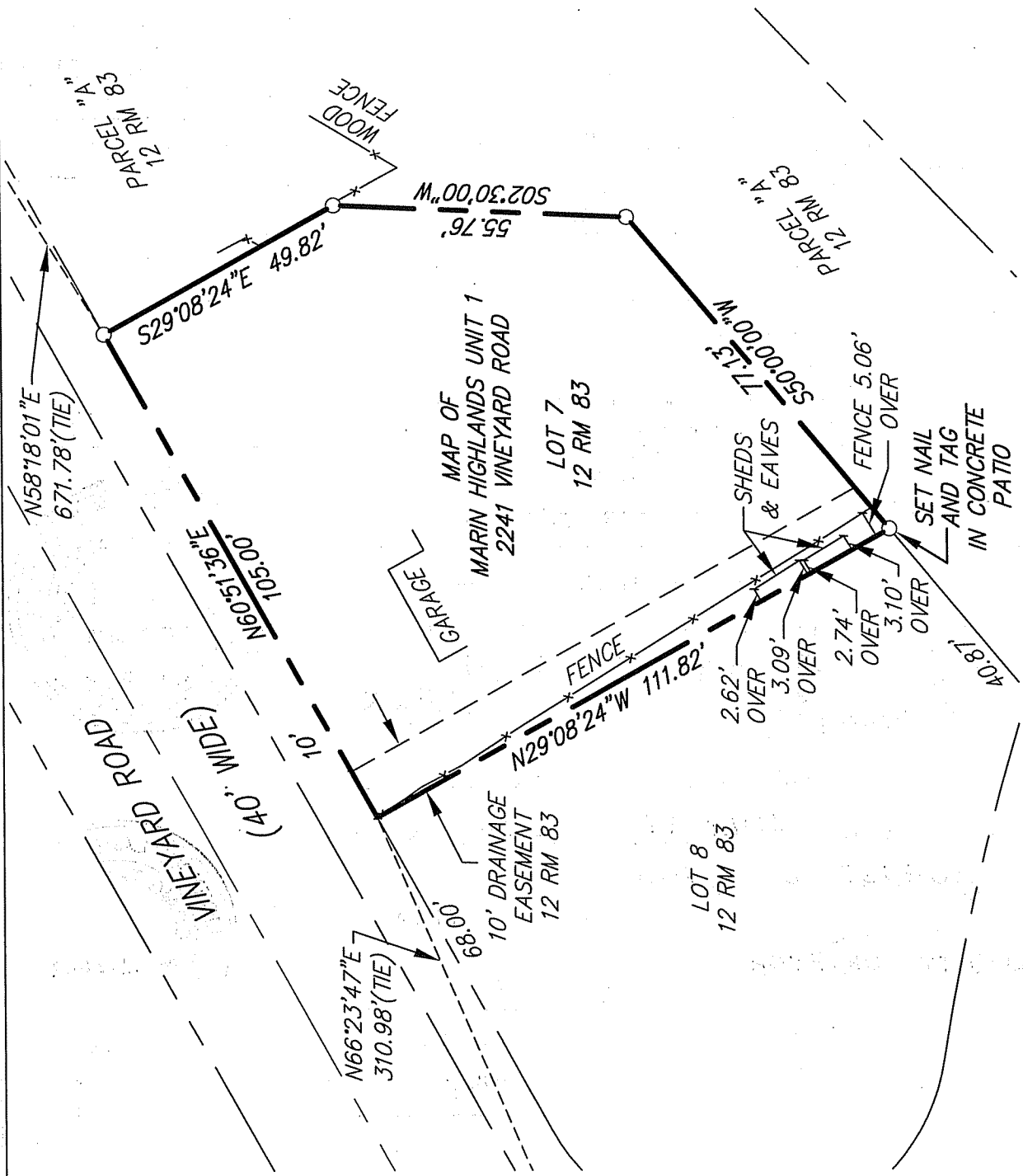


EXHIBIT "A"



ILS ASSOCIATES, INC.®
CIVIL ENGINEERING AND LAND SURVEYING

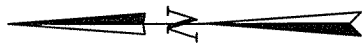
79 GALLI DRIVE, SUITE A NOVATO, CA 94949-5717 (415)883-9200 FAX (415)883-2763

NOTE
ALL DIMENSIONS AND BEARINGS SHOWN HEREON ARE PER 12 RM 83.

LEGEND
○ SET 3/4" IRON PIPE WITH YELLOW CAP & TAG & NAIL "R.C.E. 18221", EXCEPT AS NOTED OTHERWISE

DATE: 07/13/2011
FILE: 8579CR.dwg
PAGE 2 OF 3

A.P.N. 146-141-07.



SCALE: 1" = 100'

N58°18'01"E
671.78'(TIE)

BASIS OF BEARINGS
S60°31'36"W 10083.94'
S60°31'36"W 10083.94'

10'

VINEYARD ROAD
(40' WIDE)

N66°23'47"E
310.98'(TIE)

N11°54'58"W
20.94'(TIE)

LOT 7

LOT 8

PARCEL "A"

PARCEL "A"

EXHIBIT "B"



ILS ASSOCIATES, INC.®
CIVIL ENGINEERING AND LAND SURVEYING

79 GALLI DRIVE, SUITE A NOVATO, CA 94949-5717 (415)883-9200 FAX (415)883-2763

NOTE

ALL DIMENSIONS AND BEARINGS
SHOWN HEREON ARE PER 12 RM 83.

LEGEND

● FOUND STANDARD STREET MONUMENT
PER 12 RM 83

DATE: 07/13/2011
FILE: 6579CR.dwg
PAGE 3 OF 3

A.P.N. 146-141-07