

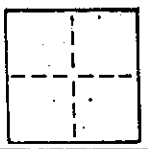
A. P. # 146-110-83

CORNER RECORD

COUNTY OF MARIN T. _____ R. _____ MERIDIAN _____ CALIFORNIA

CORNER TYPE: GOV'T. CORNER MEANDER RANCHO CONTROL OTHER

CORNER IDENTIFICATION — DATE OF VISIT _____ 19____



N/A

CORNER — LEFT AS FOUND FOUND AND TAGGED REESTABLISHED OBLITERATED CORNER REBUILT

PHYSICAL DESCRIPTION OF CORNER FOUND; EVIDENCE AND METHOD USED TO IDENTIFY OR REESTABLISH

N/A

PHYSICAL DESCRIPTION OF MONUMENTS, REBUILT OR PERPETUATED

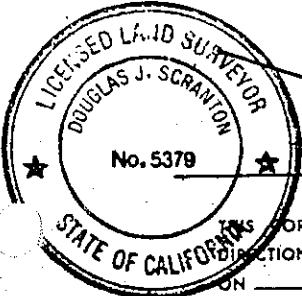
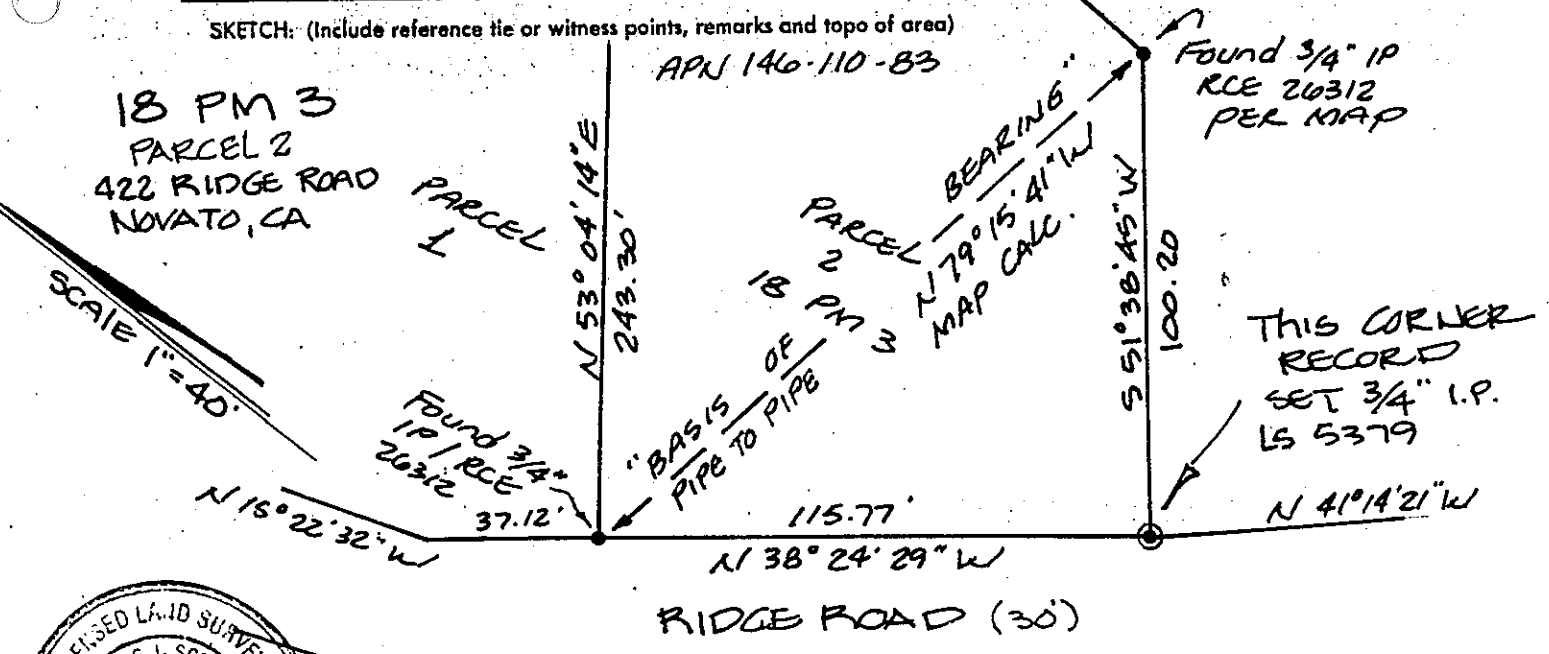
SOUTHEAST CORNER OF PARCEL 2 OF 18 PM 3
BEING A.P.N. 146-110-83
NOVATO, CALIFORNIA

CALIFORNIA COORDINATE SYSTEM ORDER: FIRST SECOND THIRD N/A

STATIONS USED: NGS (USC & GS) STATE COUNTY OTHER STATION _____ STATION _____

ZONE _____ ELEVATION _____ NORTHINGS (Y) _____ EASTINGS (X) _____

SKETCH: (Include reference tie or witness points, remarks and topo of area)



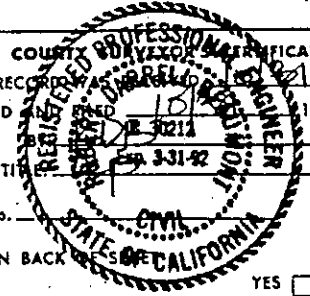
SURVEYOR'S CERTIFICATE

THIS CORNER RECORD WAS PREPARED BY ME OR UNDER MY DIRECTION IN CONFORMANCE WITH THE LAND SURVEYORS ACT ON OCT. 30 1989

SIGNED: Douglas J. Scranton

L.S. or R.C.E. No. 5379 EXP. 6/30/92

SEAL



COUNTY PROFESSIONAL ENGINEER

THE CORNER RECORD WAS EXAMINED AND EXAMINED BY Douglas J. Scranton ON 10/19/89

TITLE CORNER RECORD

DOCUMENT No. _____

STATEMENT ON BACK YES NO