

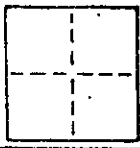
A. P. #146-110-80

# CORNER RECORD

COUNTY OF MARIN T. \_\_\_\_\_ R. \_\_\_\_\_ MERIDIAN \_\_\_\_\_ CALIFORNIA

CORNER TYPE: GOVT. CORNER  MEANDER  RANCHO  CONTROL  OTHER

CORNER IDENTIFICATION -- DATE OF VISIT \_\_\_\_\_ 19\_\_\_\_



CORNER -- LEFT AS FOUND  FOUND AND TAGGED  REESTABLISHED OBLITERATED CORNER  REBUILT

PHYSICAL DESCRIPTION OF CORNER FOUND; EVIDENCE AND METHOD USED TO IDENTIFY OR REESTABLISH

Set a 3/4" I.D. iron pipe with plastic plug embossed "LS 3775" at the southerly terminus of the course N 10°06'30" E 50.30' by and per 12-PM-17; Marin County Records.

PHYSICAL DESCRIPTION OF MONUMENTS REBUILT OR PERPETUATED

As shown

AP No. 146-110-80

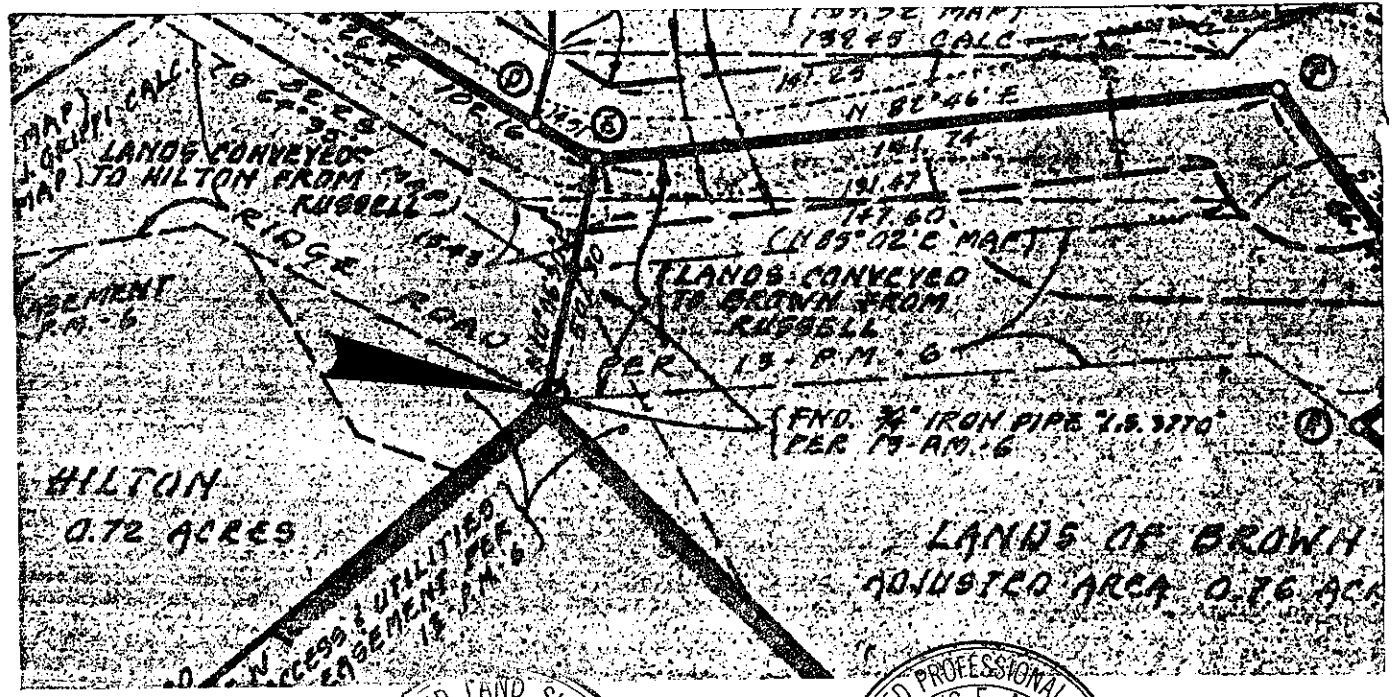
J 1540

CALIFORNIA COORDINATE SYSTEM ORDER: FIRST  SECOND  THIRD

STATIONS USED: NGS (USC & GS)  STATE  COUNTY  OTHER  STATION \_\_\_\_\_ STATION \_\_\_\_\_

ZONE \_\_\_\_\_ ELEVATION \_\_\_\_\_ NORTHINGS (Y) \_\_\_\_\_ EASTINGS (X) \_\_\_\_\_

SKETCH: (Include reference tie or witness points, remarks and topo of area)



**SURVEYOR'S CERTIFICATE**

THIS CORNER RECORD WAS PREPARED BY ME UNDER MY DIRECTION IN CONFORMANCE WITH THE LAND SURVEYORS ACT ON 1-29 1987 No. 3775

SIGNED: \_\_\_\_\_

L.S. or R.C.E. No. \_\_\_\_\_

EXPIRES (1-8) \_\_\_\_\_

SEAL

**REGISTERED PROFESSIONAL LAND SURVEYOR'S CERTIFICATE**

CORNER RECORD WAS RECEIVED \_\_\_\_\_ 19\_\_\_\_

AND EXAMINED AND FILED 5-29 1987

No. 18652 BY Charles E. Mullen

Exp. 6-30-89

TITLE: Mar. Co. Surv.

STATEMENT ON BACK OF SHEET YES  NO