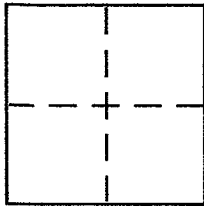


CORNER RECORD

Document Number 146-110-79
City of NOVATO County of MARIN, California

Brief Legal Description LANDS of Conrow depicted upon 210591



CORNER TYPE

Government Corner Control
Meander Property
Rancho Other
Date of Survey July 7, 2005

COORDINATES (Optional)

N. _____
E. _____
Zone _____ NAD27 NAD83
NAD83 Epoch _____
Elev. _____
Vert. Datum: NGVD29 NAVD88
Meas. Units: Metric Imperial

Corner - Left as found Found and tagged Established Reestablished Rebuilt

Identification and type of corner found: Evidence used to identify or procedure used to establish or reestablish the corner:

REESTABLISH AN ANGLE POINT in the southerly line of the LAND OF CONROW depicted upon 210591 At the intersection of the two courses S 53°10'18" E, 253.00' & S 53°32'35" W, 27.39'. REESTABLISHED FROM FOUND MONUMENTATION of SAID 210591. see sketch for details

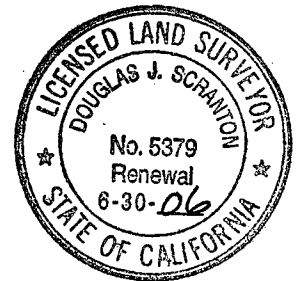
A description of the physical condition of the monument as found and as set or reset:

set 1/2" rebar with PLS CAP 5379 Affixed to top & driven flush with surrounding grade

SURVEYOR'S STATEMENT

This Corner Record was prepared by me or under my direction in conformance with the Land Surveyor's Act on July 21st 2005

Signed Douglas J. Scranton P.L.S or R.C.E. No. PLS 5379



COUNTY SURVEYOR'S STATEMENT

This Corner Record was received AUGUST 5, 2005 and examined and filed SEPTEMBER 8, 2005

Signed Craig Tackabery P.L.S or R.C.E. No. 7128

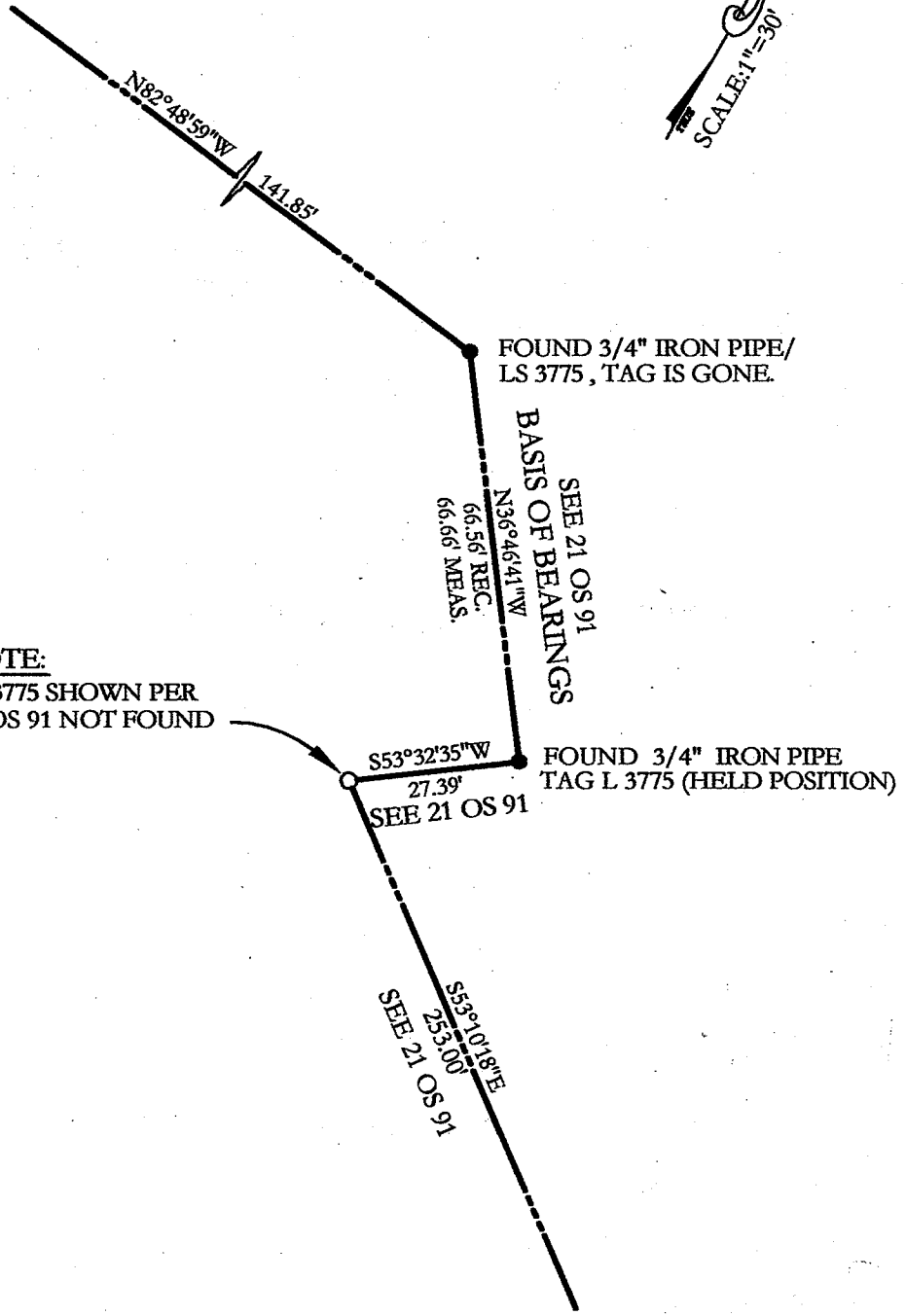
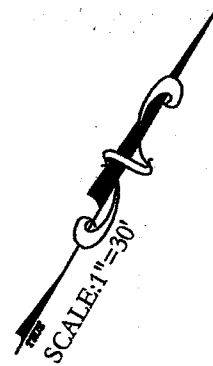
Title COUNTY SURVEYOR



County Surveyor's Comment _____

JN 10531

PREPARED BY: DJ SCRANTON SURVEYING NOVATO CA



NOTE:
LS 3775 SHOWN PER
21 OS 91 NOT FOUND

ALL DISTANCES GIVEN IN FEET
AND DECIMALS THEREOF
NO EASEMENTS ARE DEPICTED

LEGEND

- SET 1/2" REBAR/PLS 5379
- FOUND MONUMENTATION AS NOTED.

BASIS OF BEARINGS

TAKEN AS N36°46'41"W BETWEEN IRON PIPES
AS SHOWN HEREON AND AS SHOWN UPON 21 OS 91